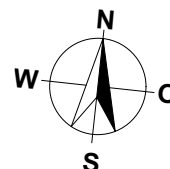
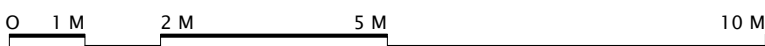


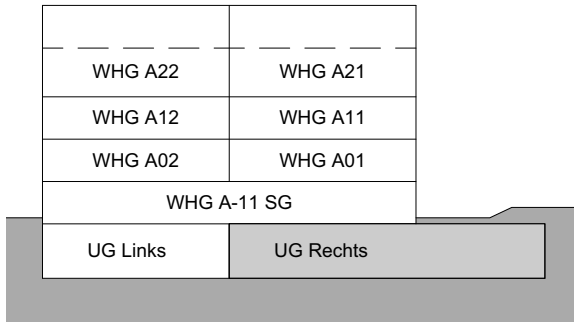
**MEHRFAMILIENHAUS A  
TALACHER  
3068 UTZIGEN**

**3.5 ZIMMER**

WOHNUNG: WHG A12 OG  
 KELLER: 10.0 m<sup>2</sup>  
 LOGGIEN: 14.5 m<sup>2</sup>  
 NETTOWOHNFLÄCHE: 86.0 m<sup>2</sup>

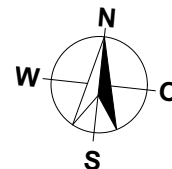
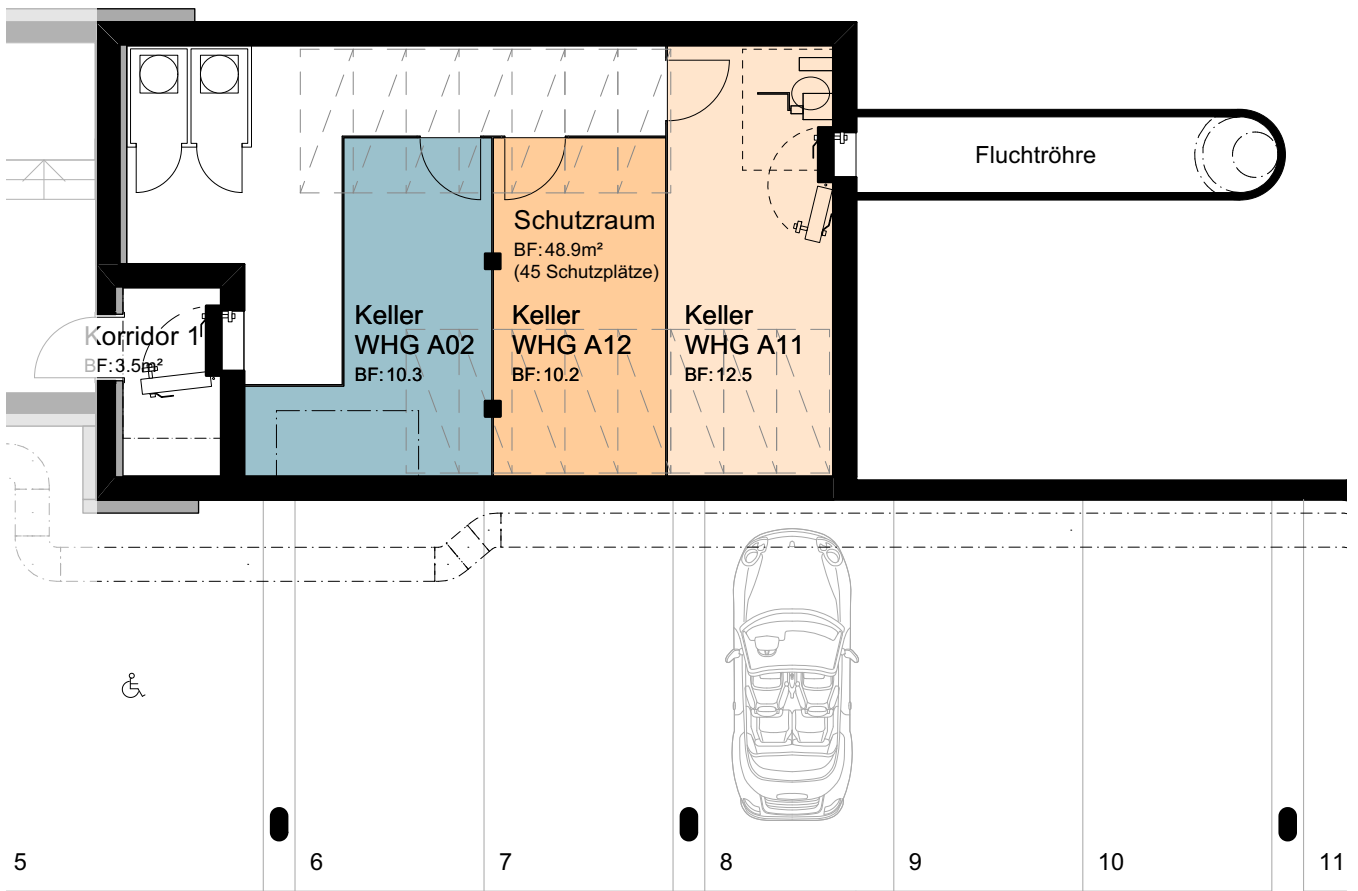


MASSTAB 1:100

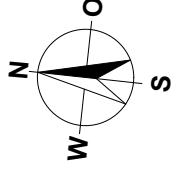
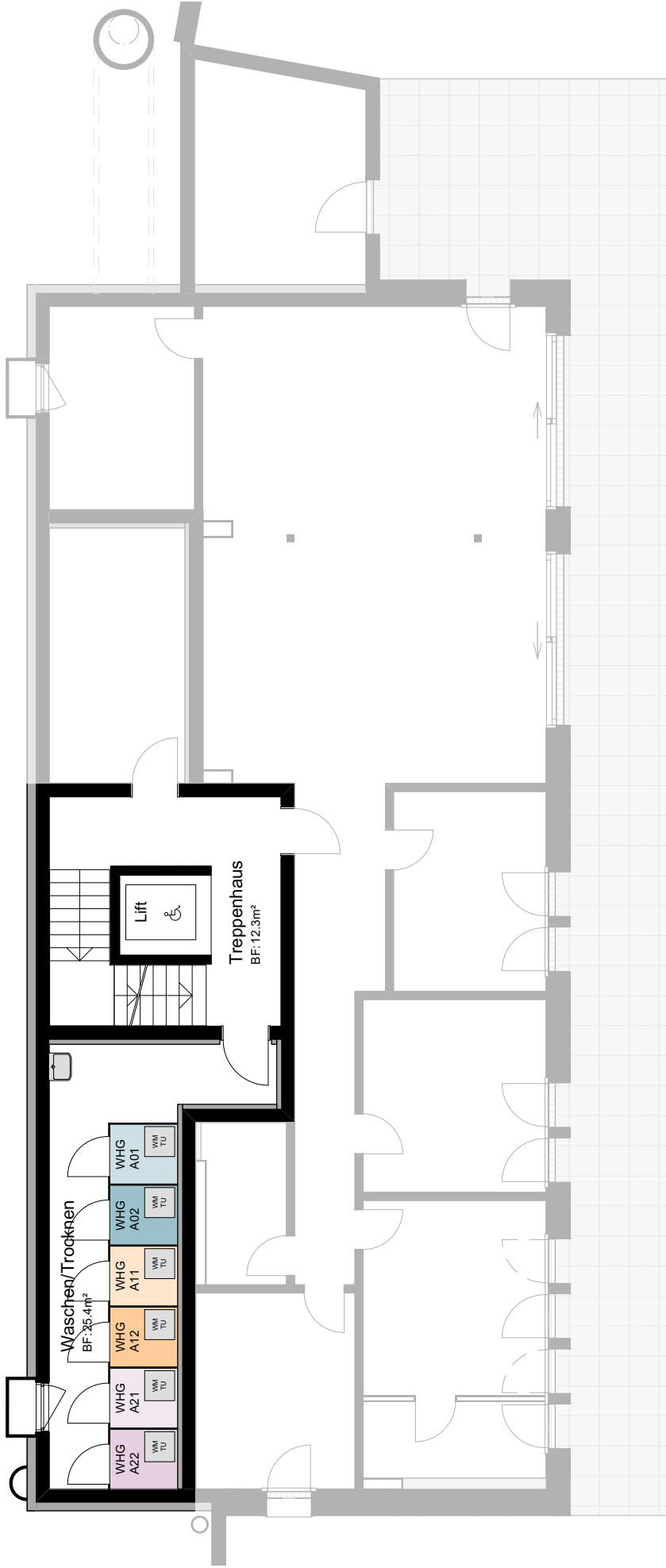


MEHRFAMILIENHAUS A  
TALACHER  
3068 UTZIGEN

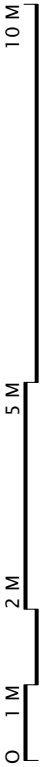
UNTERGESCHOSS RECHTS

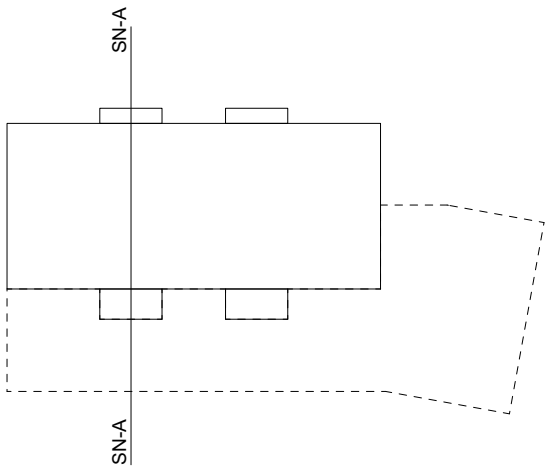


MASSTAB 1:100



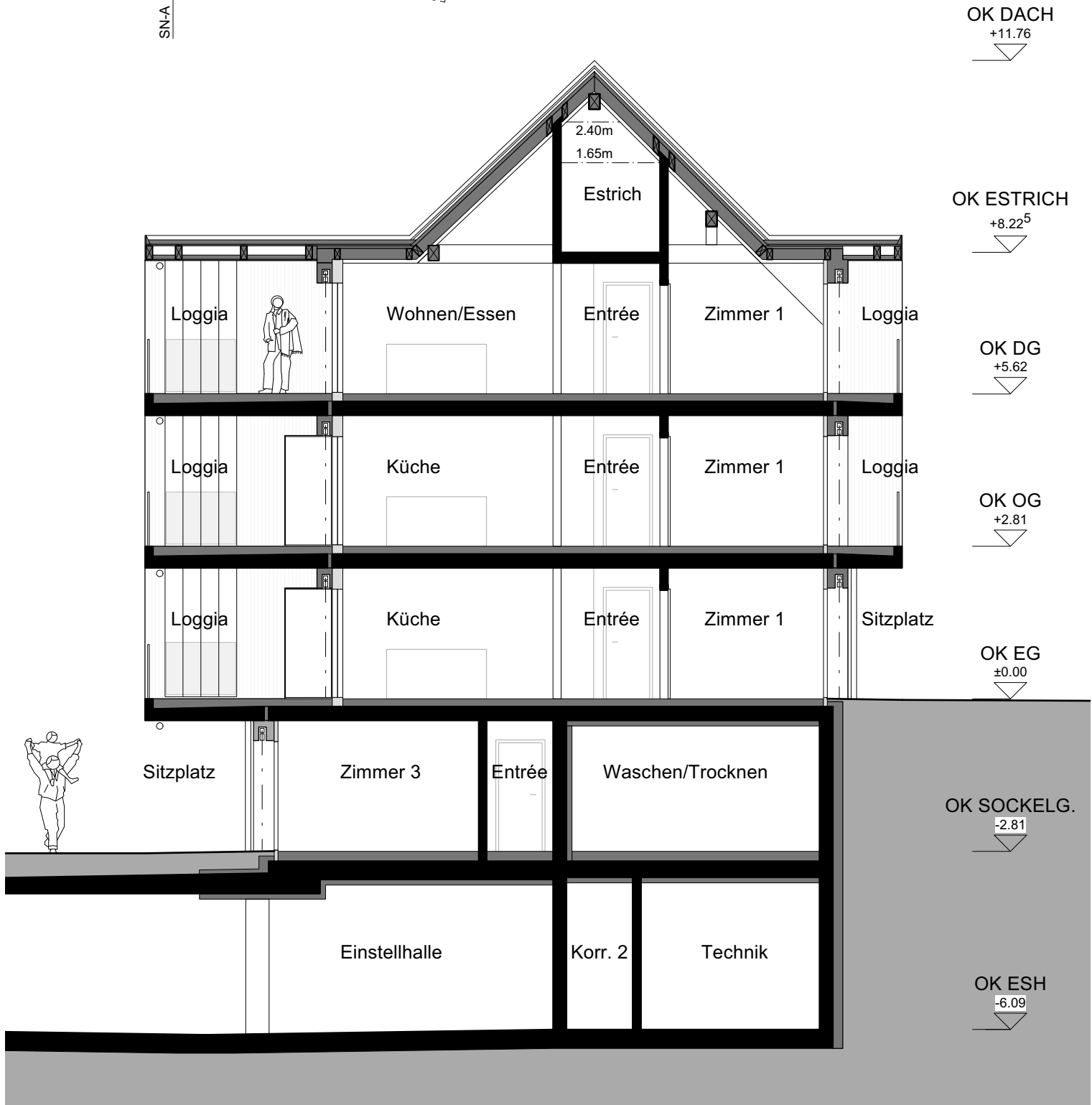
MASSTAB 1:120

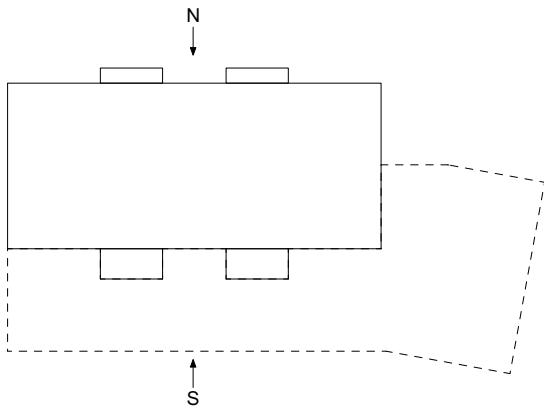




MEHRFAMILIENHAUS A  
TALACHER  
3068 UTZIGEN

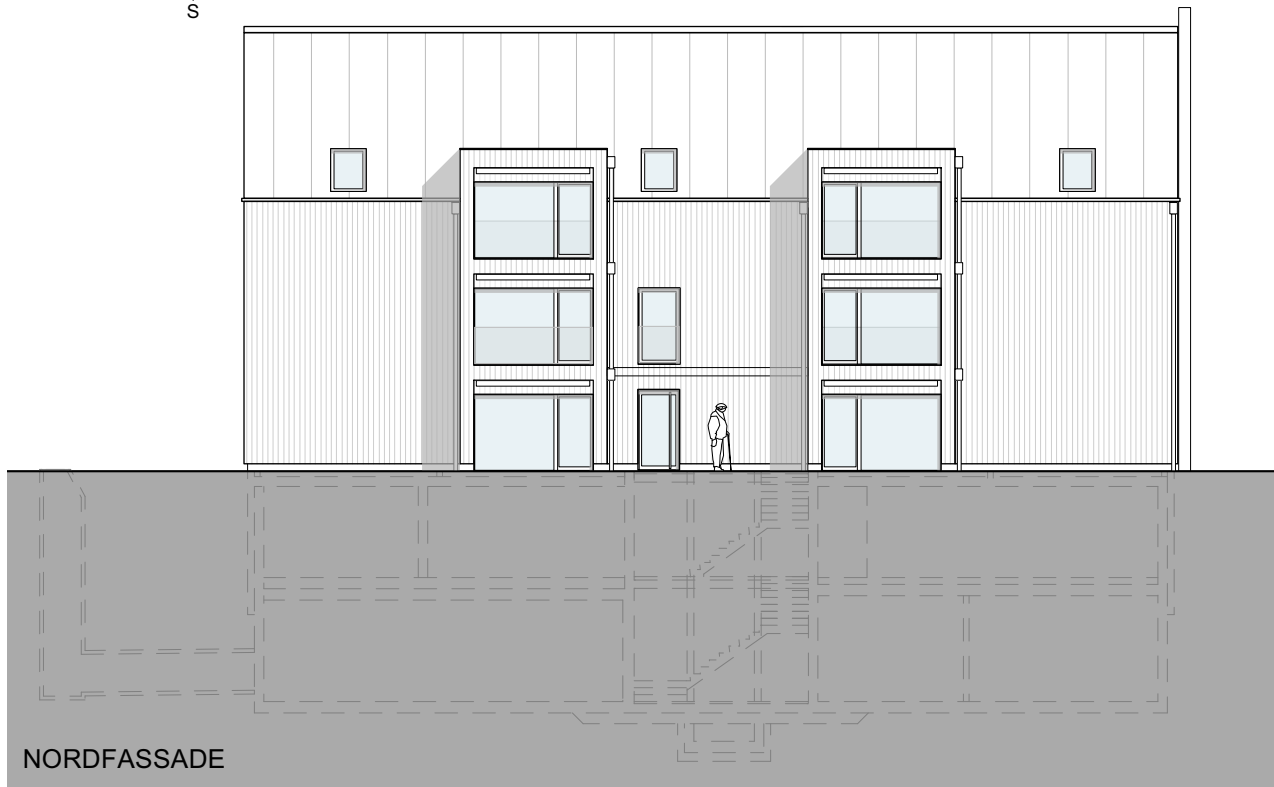
SCHNITT A-A

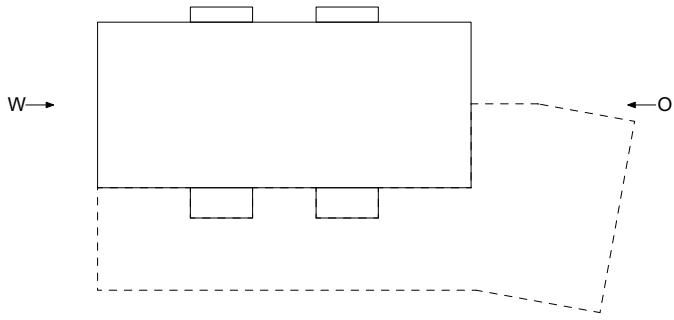




MEHRFAMILIENHAUS A  
TALACHER  
3068 UTZIGEN

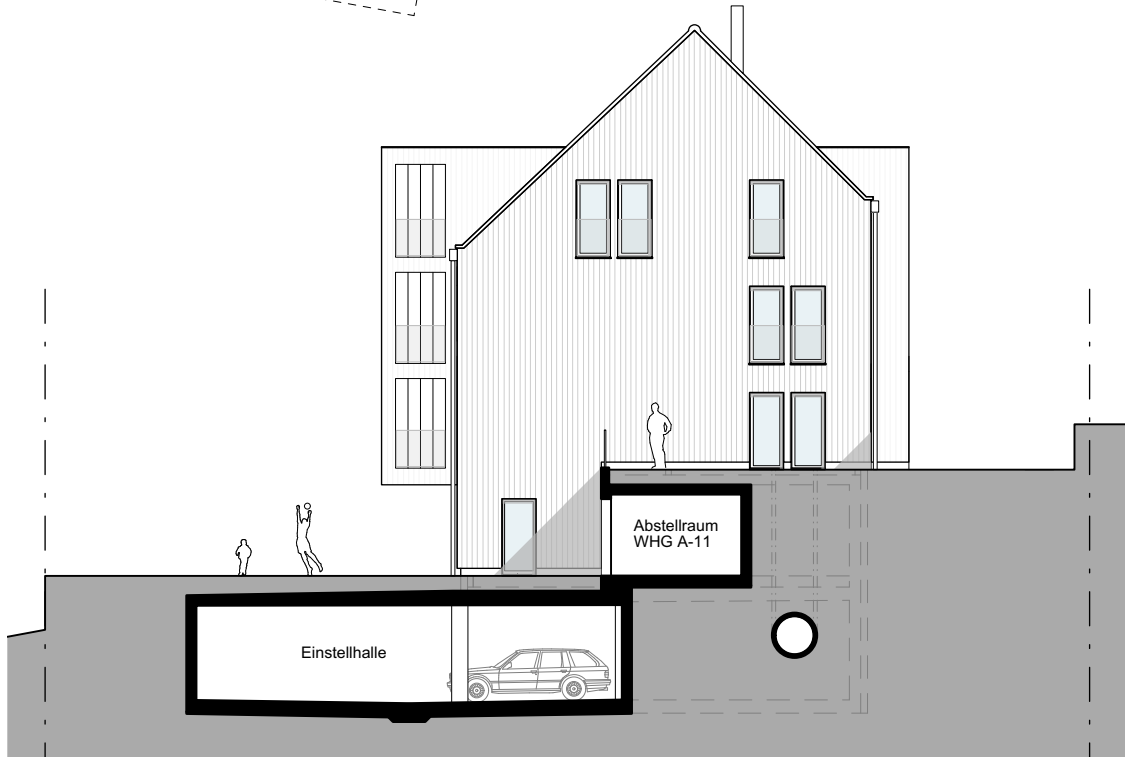
FASSADEN NORD/SÜD



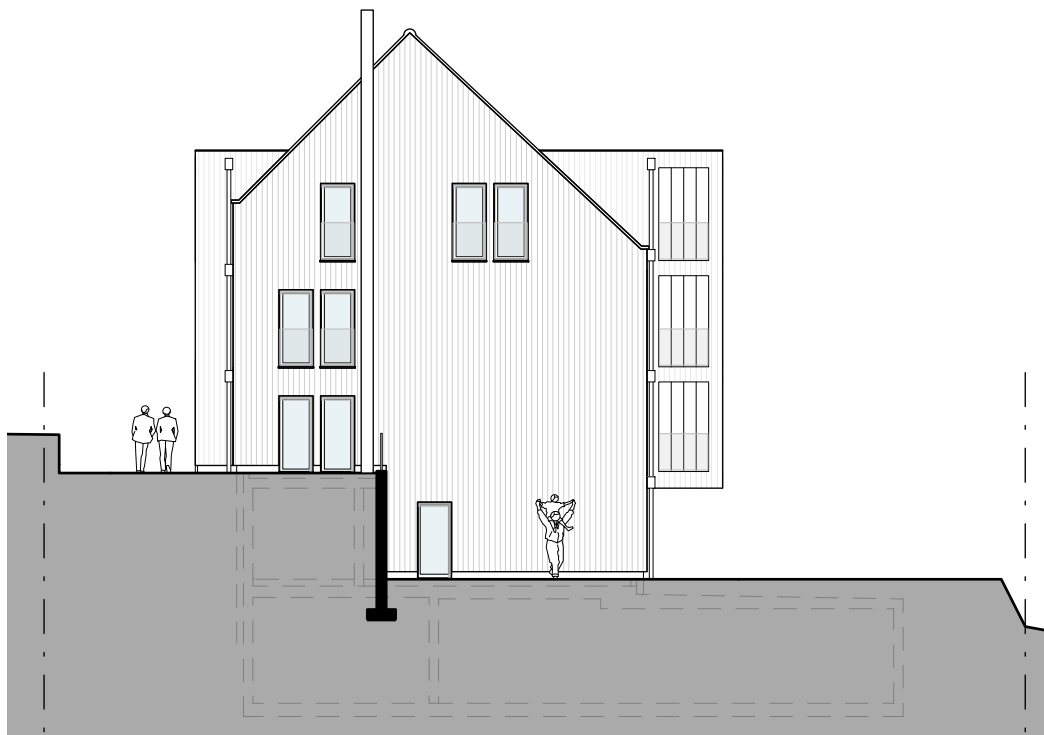


MEHRFAMILIENHAUS A  
TALACHER  
3068 UTZIGEN

FASSADEN OST/WEST



OSTFASSADE



WESTFASSADE

MEHRFAMILIENHAUS A  
TALACHER  
3068 UTZIGEN

EINSTELLHALLE/KELLER

