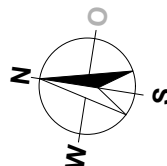
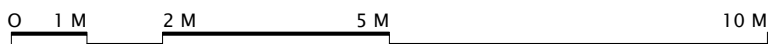
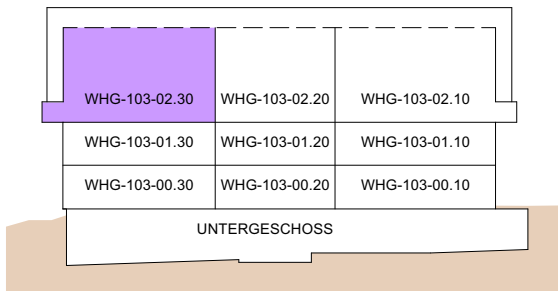


**MEHRFAMILIENHAUS  
ZILMATTSTRASSE 103  
3255 RAPPERSWIL (BE)  
3.5 ZIMMER**

WOHNUNG: WHG-103-02.30, DG  
 KELLER: 13.0 m<sup>2</sup>  
 BALKON: 11.0 m<sup>2</sup>  
 NETTOWOHNFLÄCHE DG: 98.5 m<sup>2</sup>  
 NETTOWOHNFLÄCHE GALERIE: 32.0 m<sup>2</sup>  
 NETTOWOHNFLÄCHE TOTAL: 130.5 m<sup>2</sup>

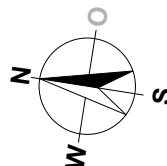
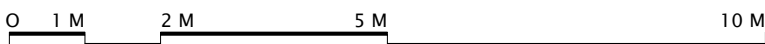
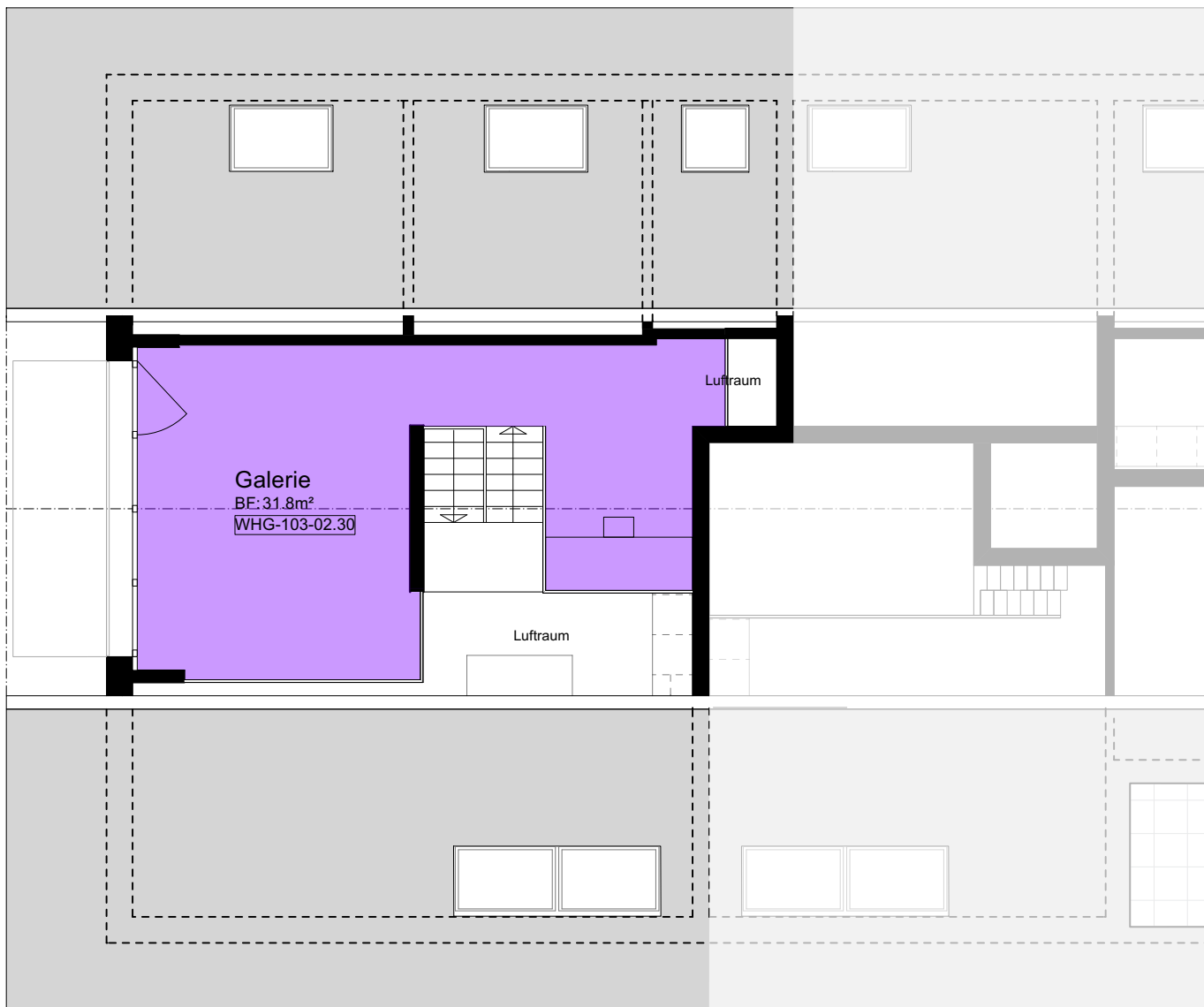


MASSTAB 1:100

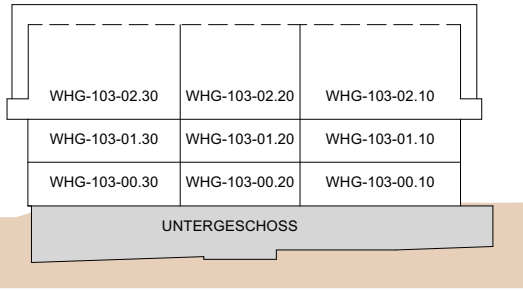


MEHRFAMILIENHAUS  
 ZILMATTSTRASSE 103  
 3255 RAPPERSWIL (BE)  
 3.5 ZIMMER

WOHNUNG: WHG-103-02.30, Galerie  
 KELLER: 13.0 m<sup>2</sup>  
 BALKON: 11.0 m<sup>2</sup>  
 NETTOWOHNFLÄCHE DG: 98.5 m<sup>2</sup>  
 NETTOWOHNFLÄCHE GALERIE: 32.0 m<sup>2</sup>  
 NETTOWOHNFLÄCHE TOTAL: 130.5 m<sup>2</sup>

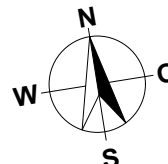


MASSTAB 1:100



MEHRFAMILIENHAUS  
ZILMATTSTRASSE 103  
3255 RAPPERSWIL (BE)

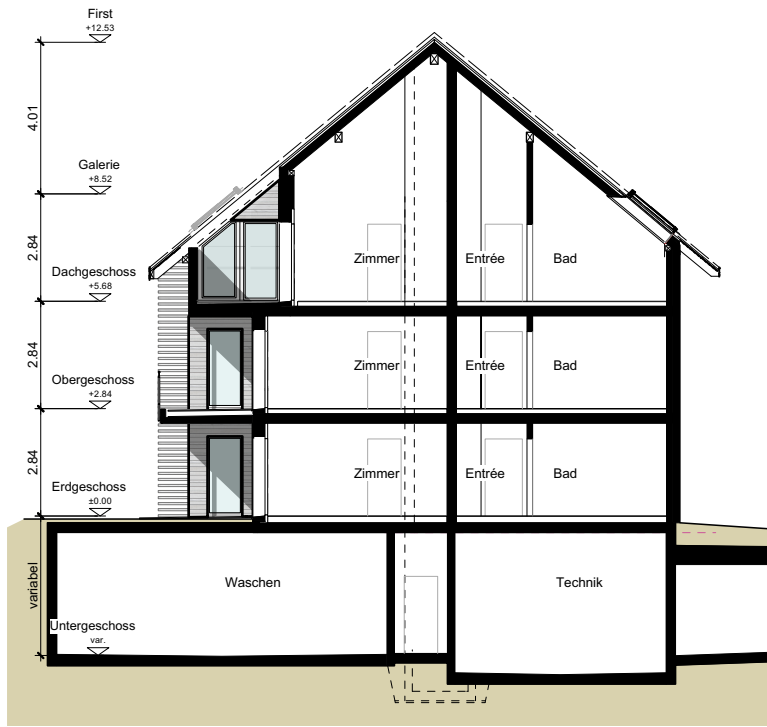
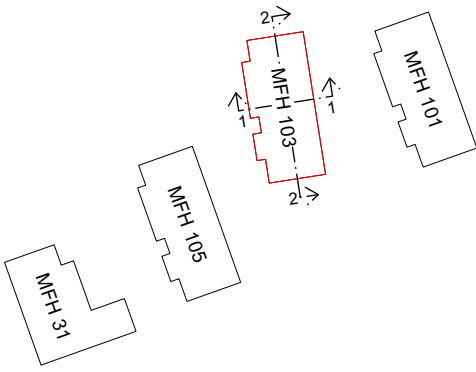
HAUS 103  
UNTERGESCHOSS



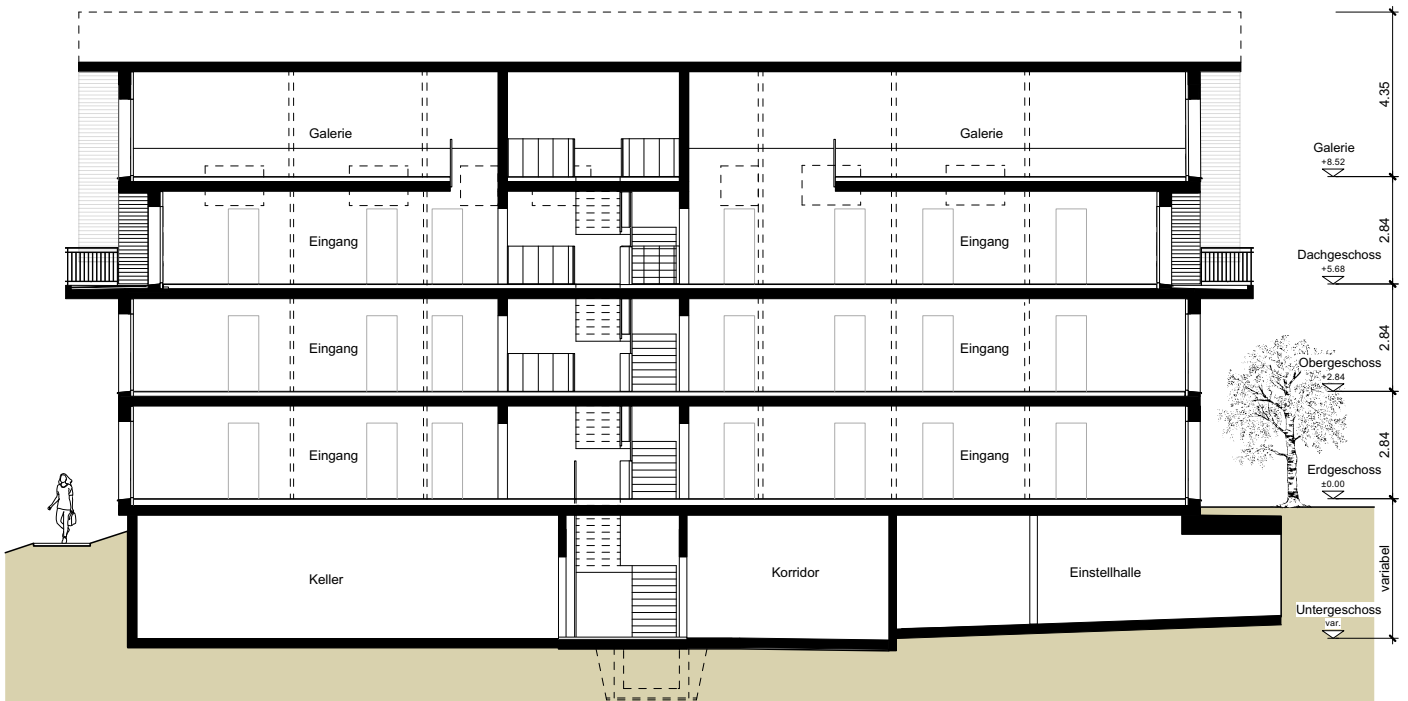
MASSTAB 1:150

MEHRFAMILIENHAUS  
ZILMATTSTRASSE 103  
3255 RAPPERSWIL (BE)

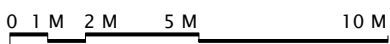
HAUS 103  
SCHNITTE



SCHNITT 1-1



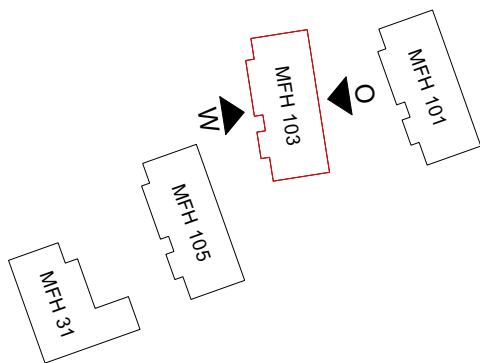
SCHNITT 2-2



MASSTAB 1:200

MEHRFAMILIENHAUS  
ZILMATTSTRASSE 103  
3255 RAPPERSWIL (BE)

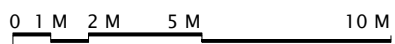
HAUS 103  
FASSADEN



OSTEN



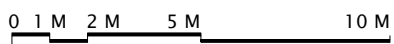
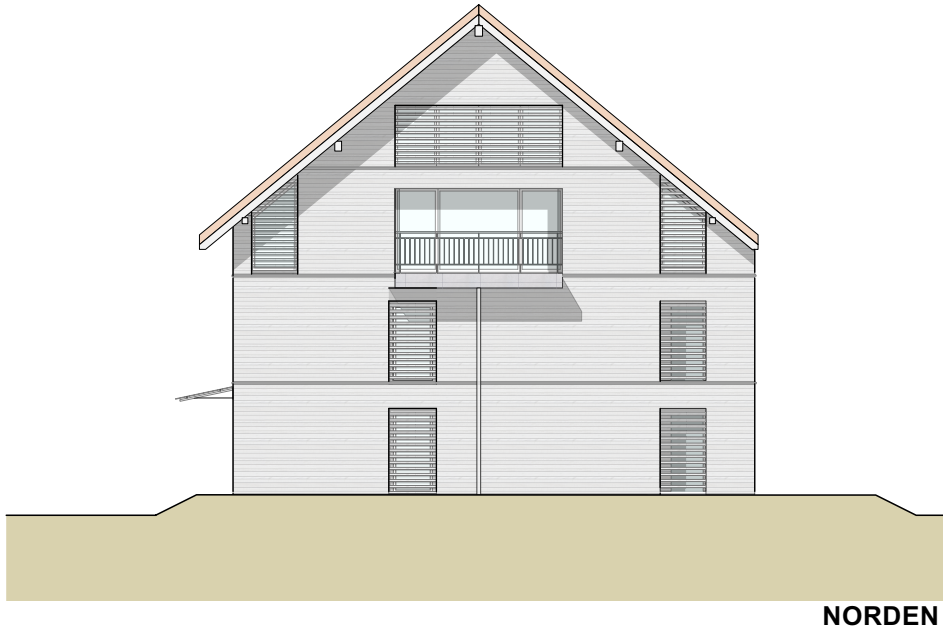
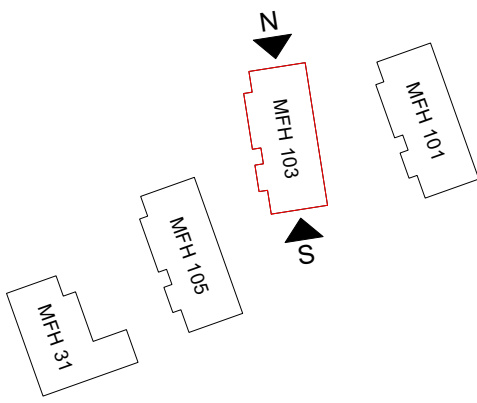
WESTEN



MASSTAB 1:200

MEHRFAMILIENHAUS  
ZILMATTSTRASSE 103  
3255 RAPPERSWIL (BE)

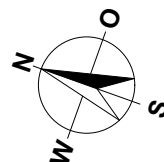
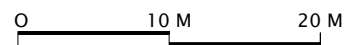
HAUS 103  
FASSADEN



MASSTAB 1:200

MEHRFAMILIENHÄUSER  
HAUPTSTRASSE 31  
ZILMATTSTRASSE 101, 103 UND 105  
3255 RAPPERSWIL (BE)

SITUATION / UNTERGESCHOSS / ESTH



MASSSTAB 1:500