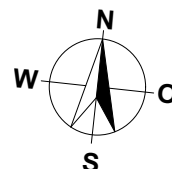
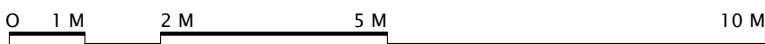


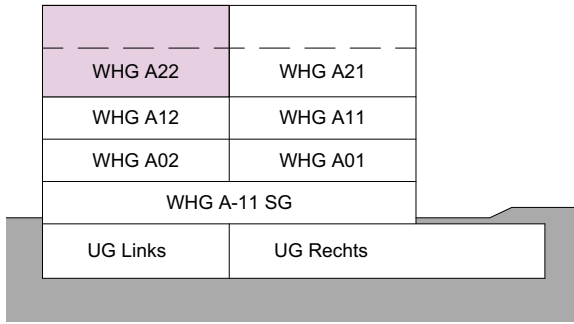
**MEHRFAMILIENHAUS A
TALACHER
3068 UTZIGEN**

3.5 ZIMMER MIT ESTRICH

WOHNUNG:	WHG A22 DG
KELLER:	10.0 m ²
LOGGIEN:	14.5 m ²
GESAMTE WOHNFLÄCHE:	85.0 m ²



MASSTAB 1:100

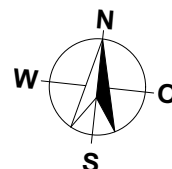
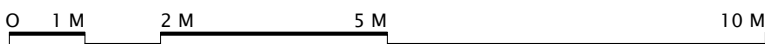
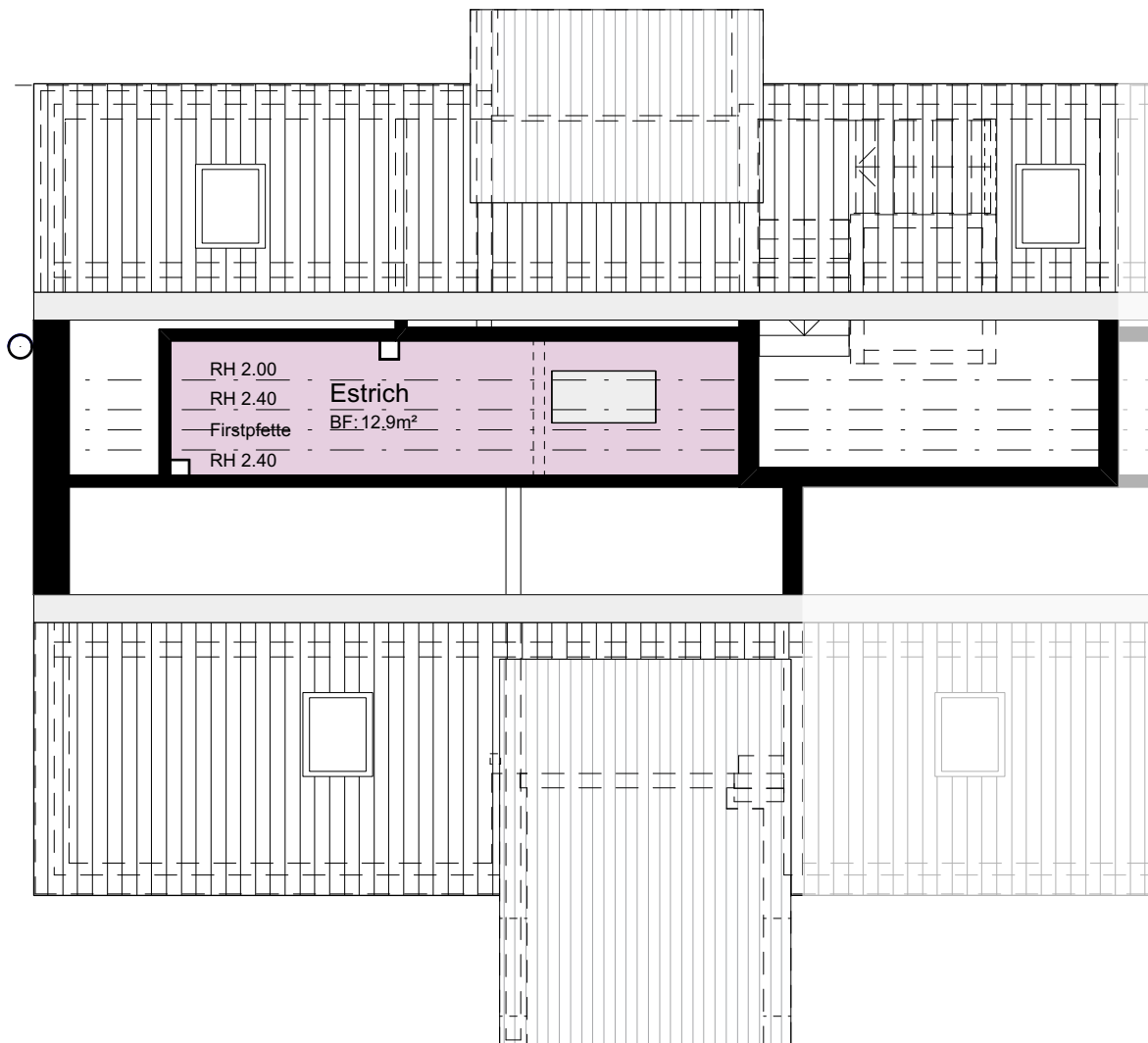


MEHRFAMILIENHAUS A
TALACHER
3068 UTZIGEN

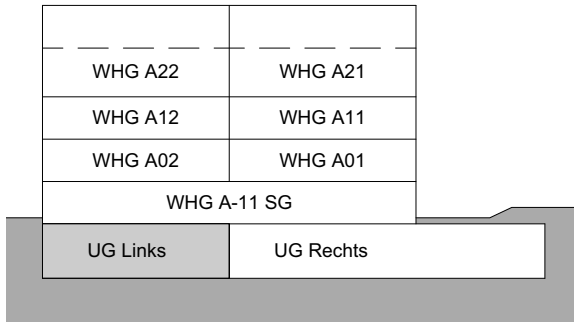
3.5 ZIMMER MIT ESTRICH

WOHNUNG:
ESTRICH:

WHG A22 Estrich
13.0 m²

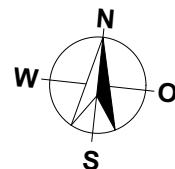
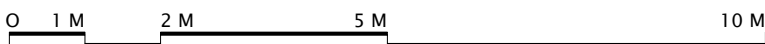
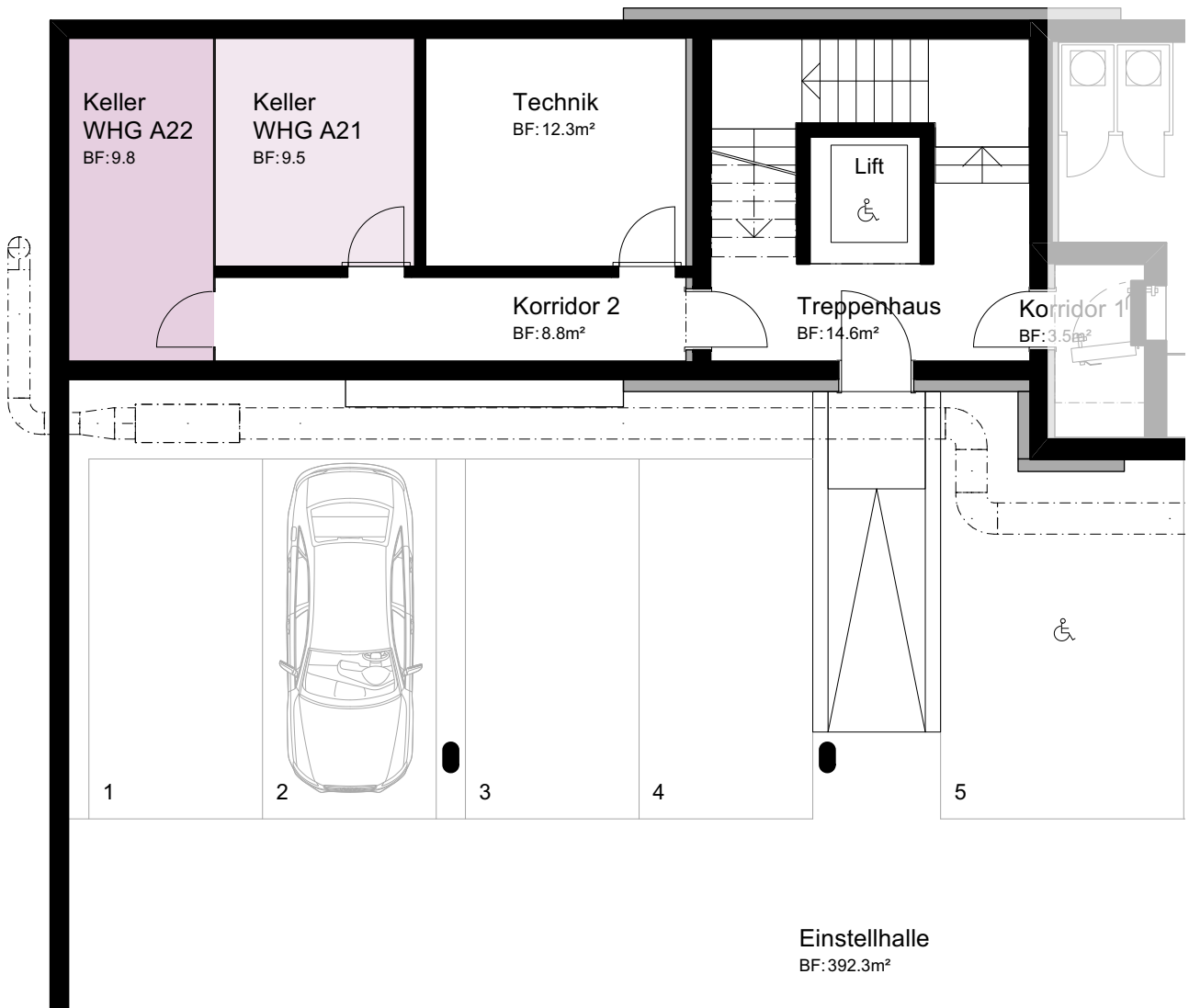


MASSTAB 1:100

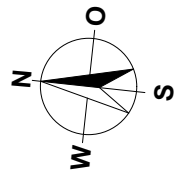
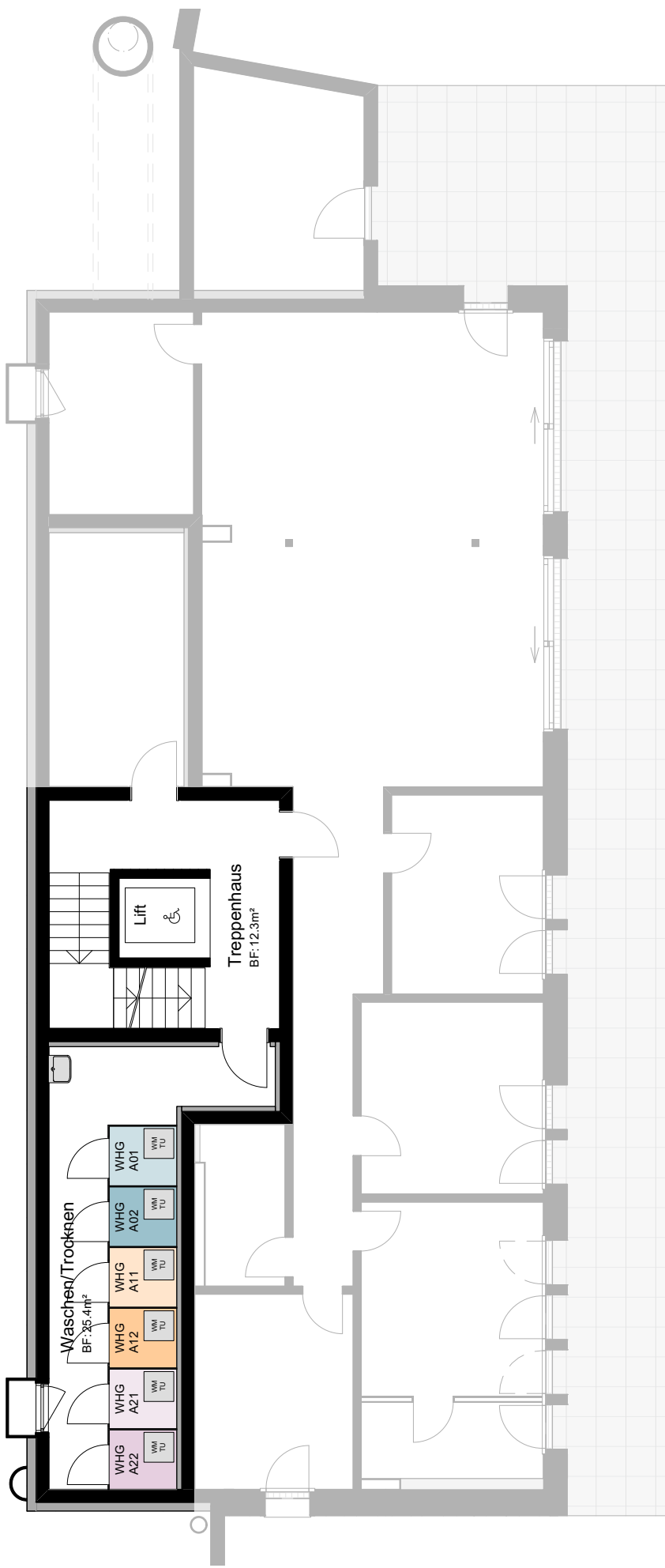


MEHRFAMILIENHAUS A
TALACHER
3068 UTZIGEN

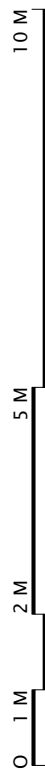
UNTERGESCHOSS LINKS

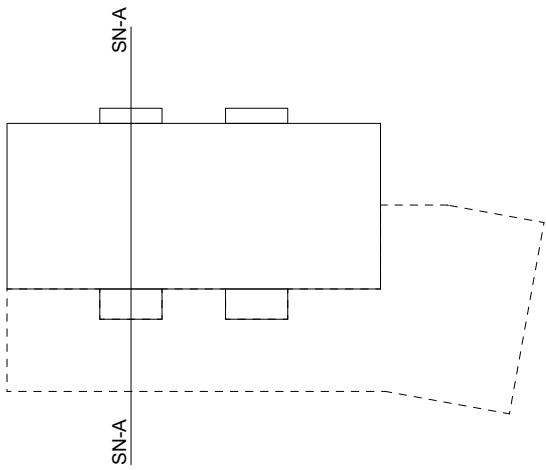


MASSTAB 1:100



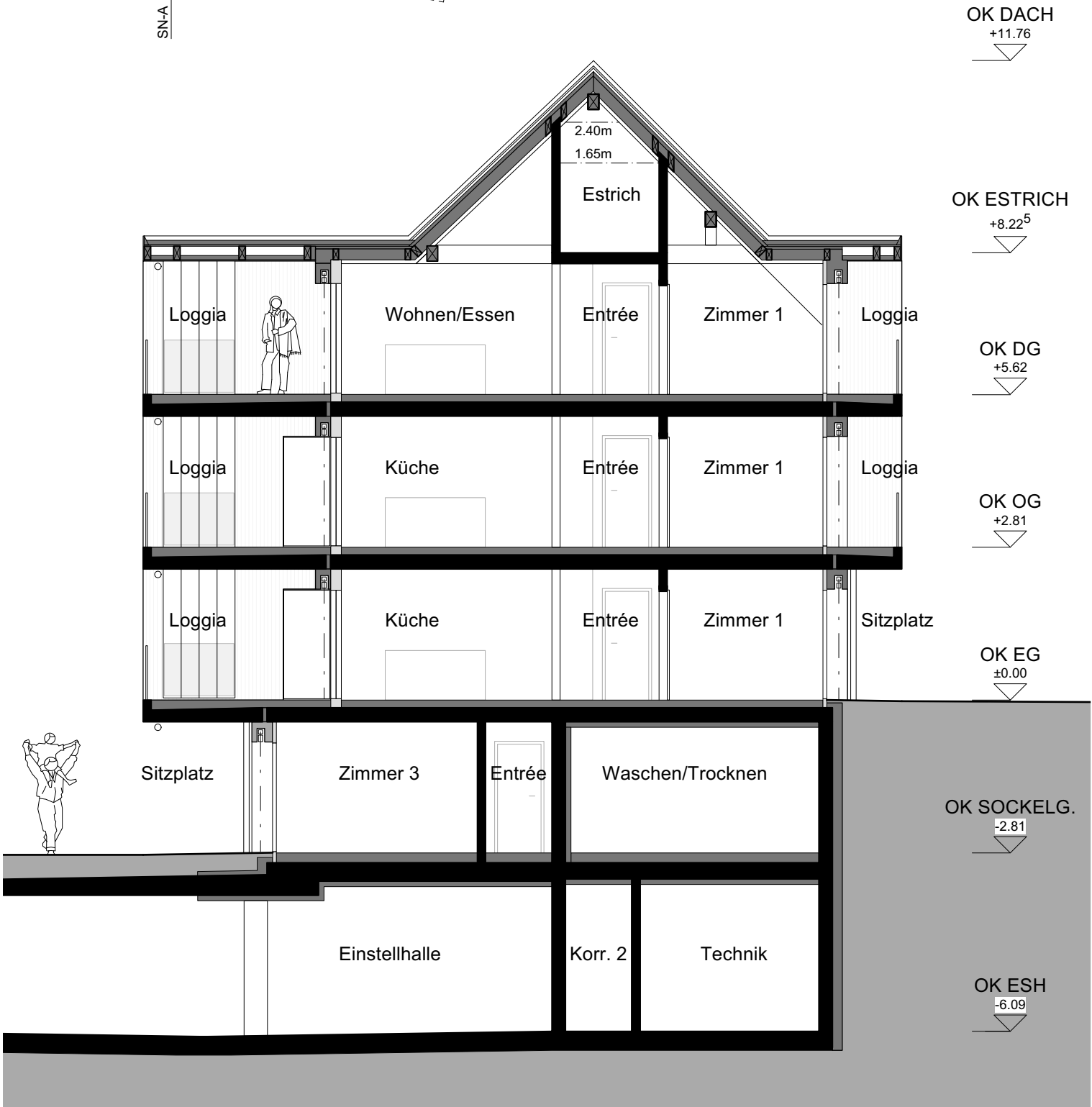
MASSTAB 1:120

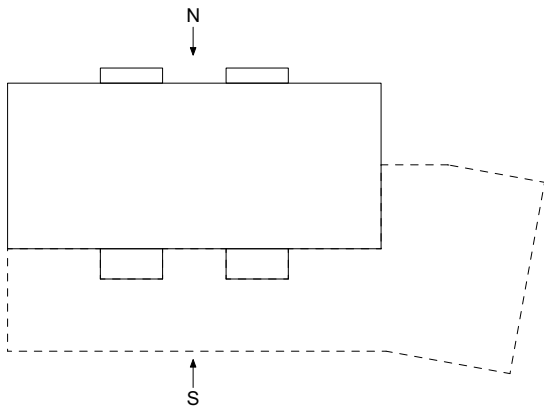




MEHRFAMILIENHAUS A
TALACHER
3068 UTZIGEN

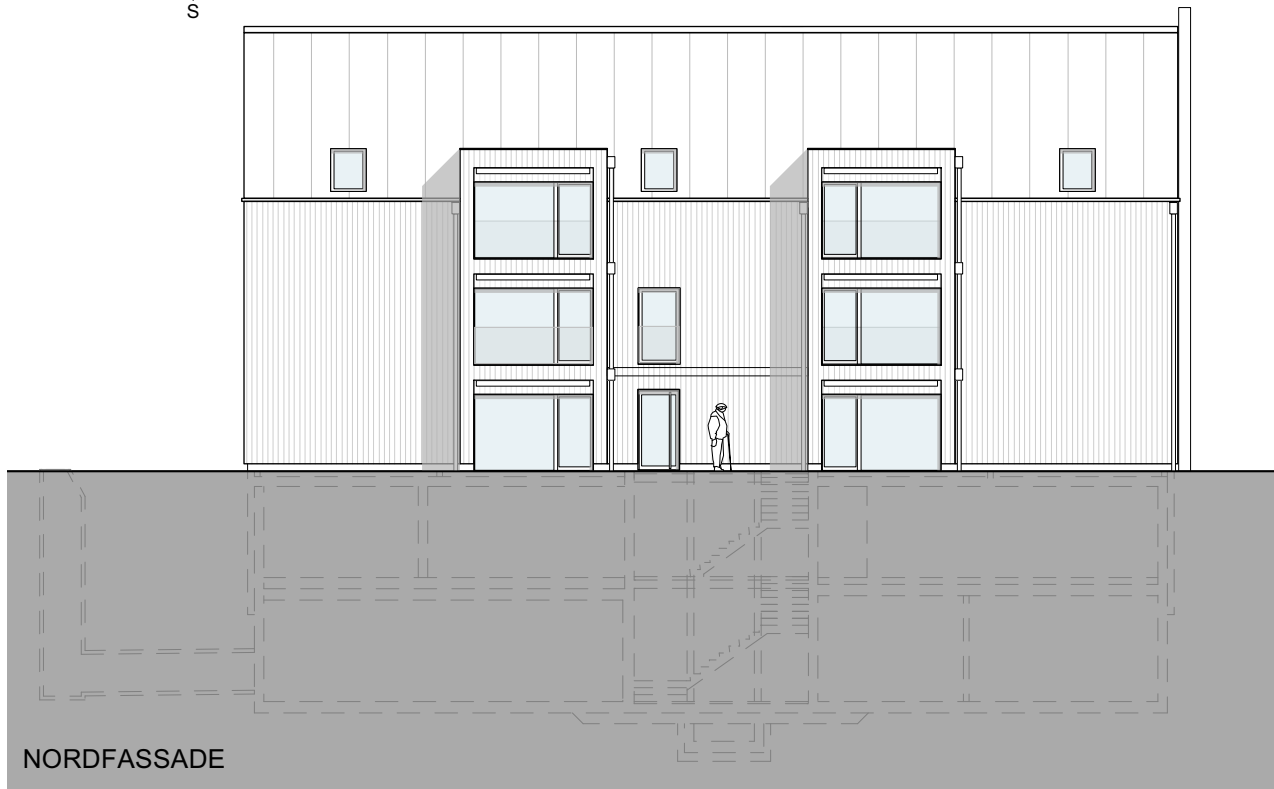
SCHNITT A-A

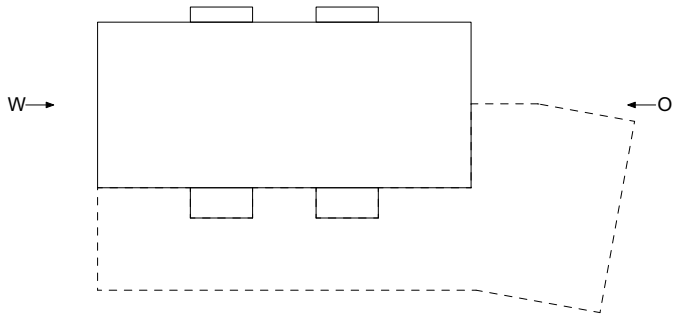




MEHRFAMILIENHAUS A
TALACHER
3068 UTZIGEN

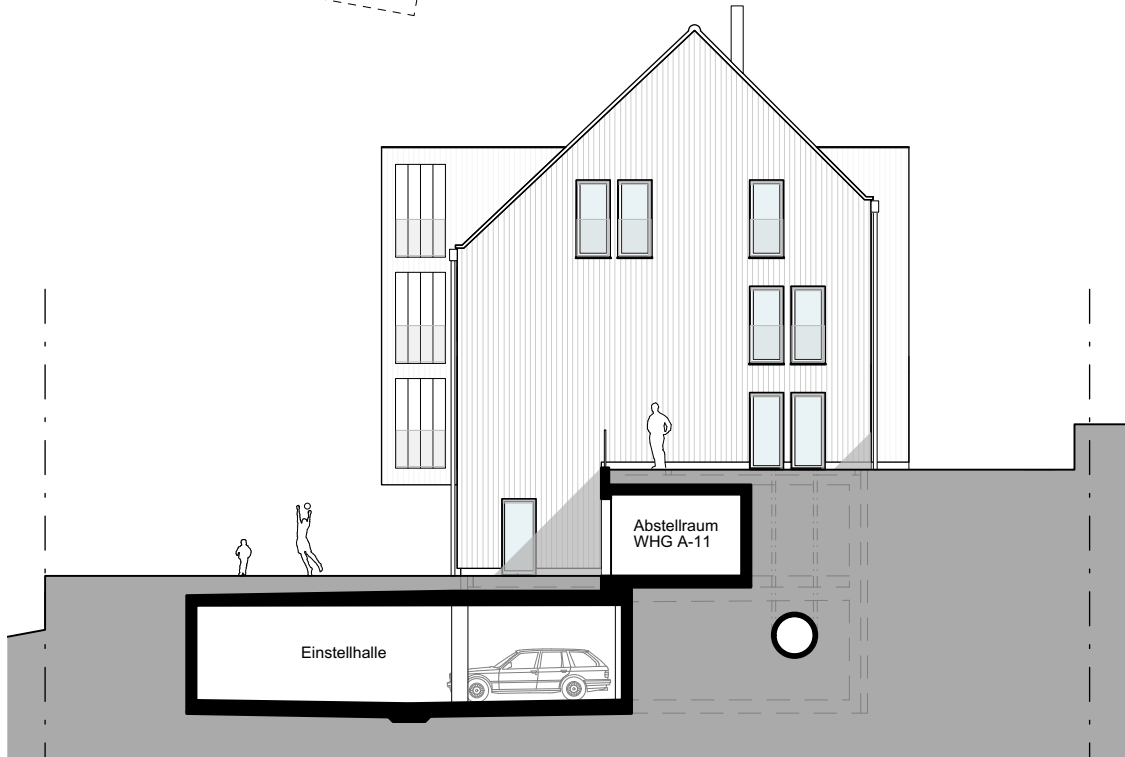
FASSADEN NORD/SÜD



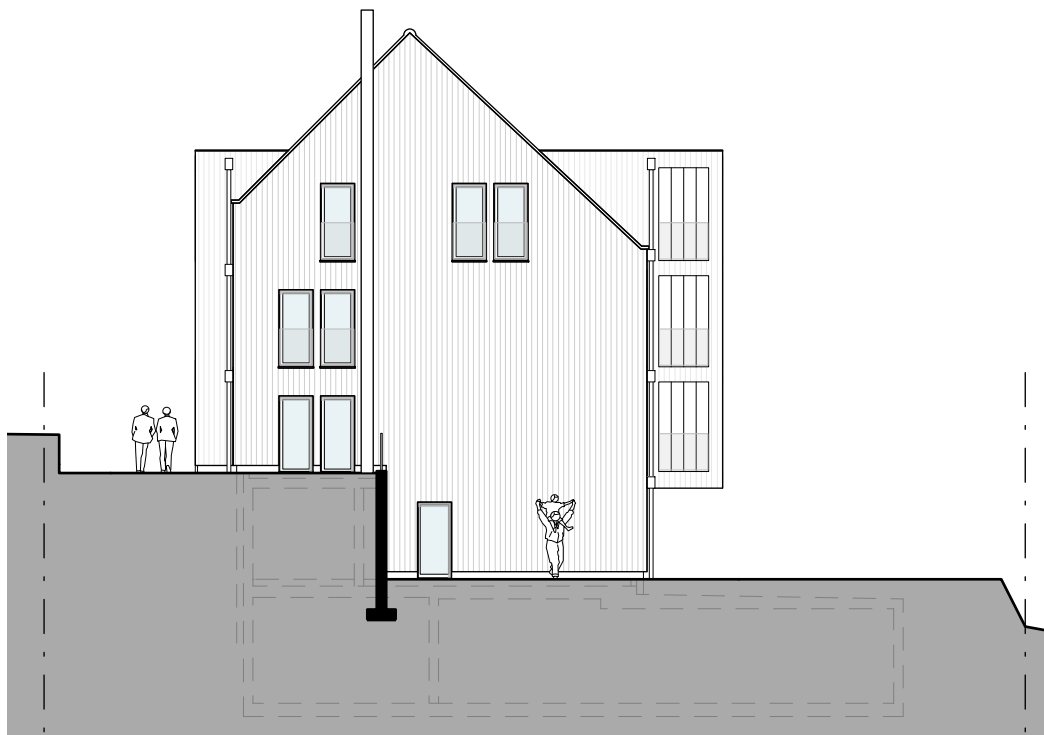


MEHRFAMILIENHAUS A
TALACHER
3068 UTZIGEN

FASSADEN OST/WEST



OSTFASSADE



WESTFASSADE

MEHRFAMILIENHAUS A
TALACHER
3068 UTZIGEN

EINSTELLHALLE/KELLER

