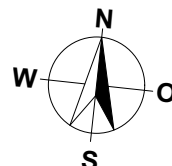
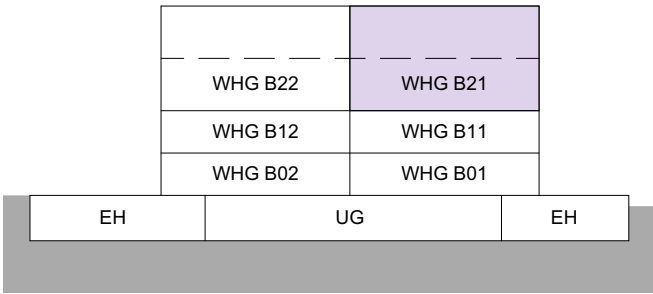


MEHRFAMILIENHAUS B
TALACHER
3068 UTZIGEN

4.5 ZIMMER MIT GALERIE

WOHNUNG: WHG B21 DG
 KELLER: 6.0 m²
 LOGGIEN: 15.0 m²
 GESAMTE WOHNFLÄCHE: 140.5 m²



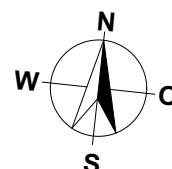
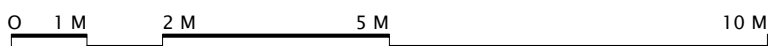
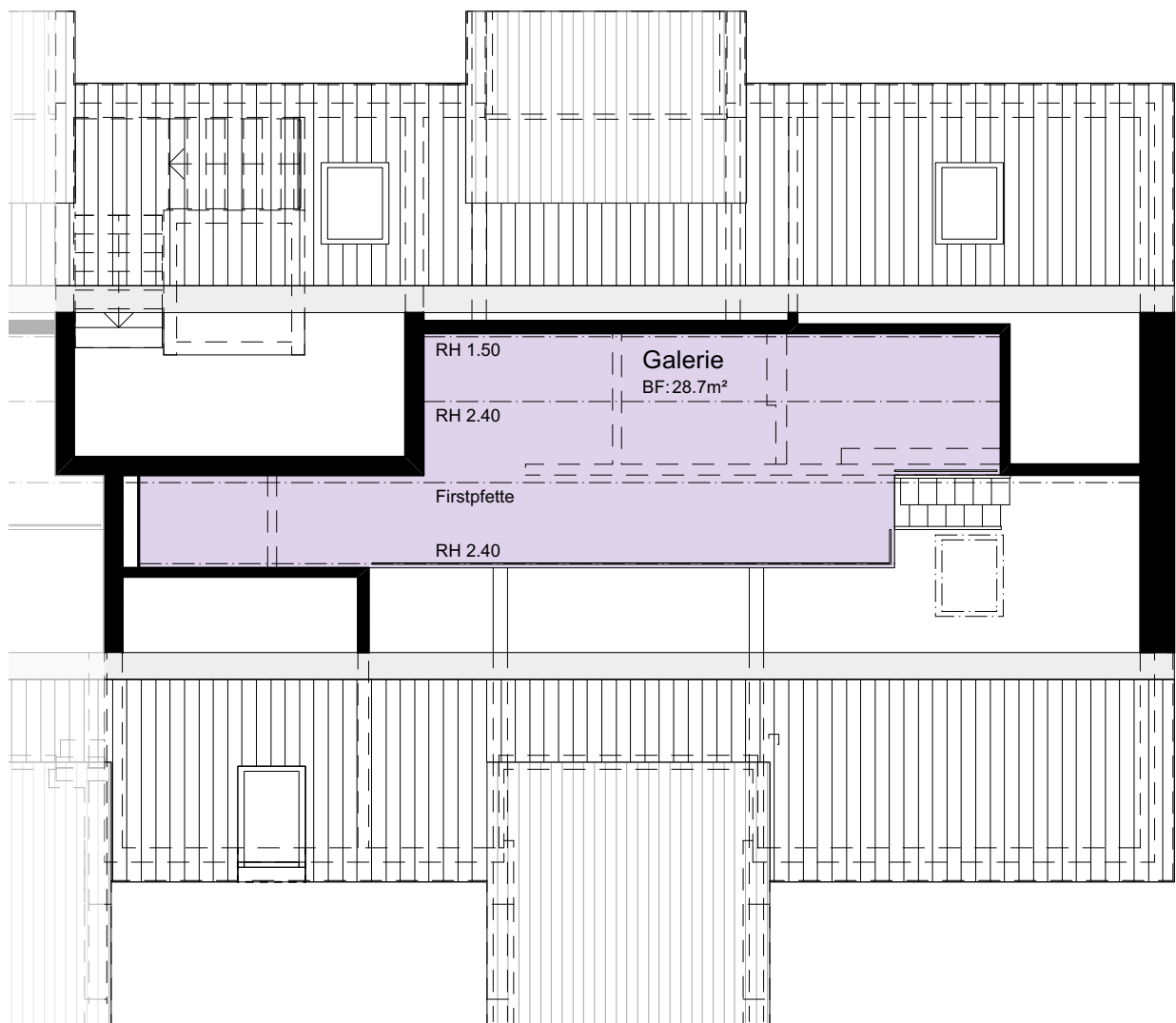
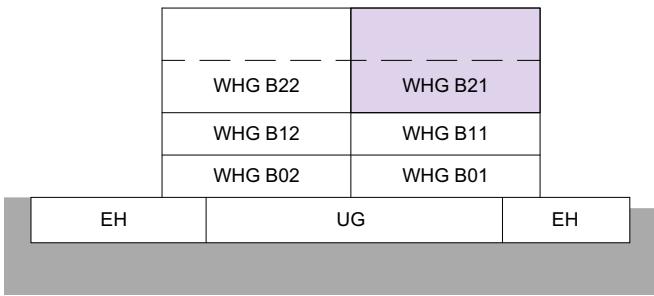
MASSTAB 1:100

MEHRFAMILIENHAUS B
TALACHER
3068 UTZIGEN

4.5 ZIMMER MIT GALERIE

WOHNUNG:
GALERIE

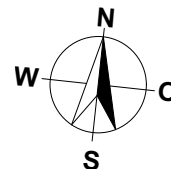
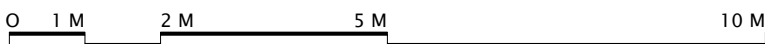
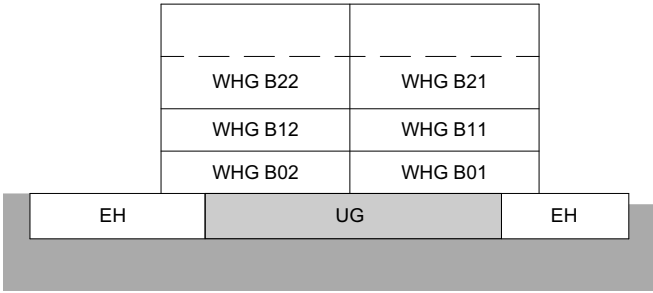
WHG B21 Galerie
28.7 m²



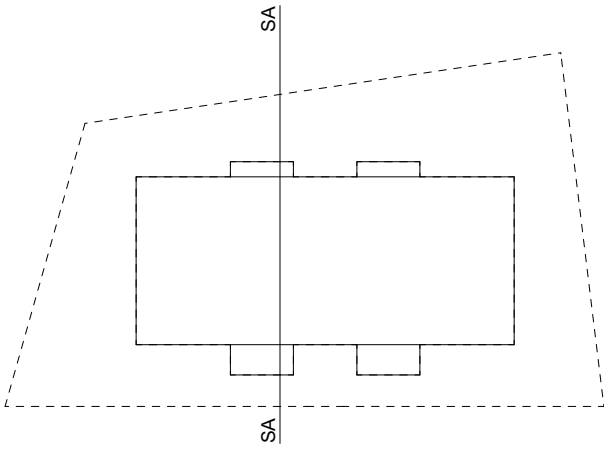
MASSTAB 1:100

MEHRFAMILIENHAUS B
TALACHER
3068 UTZIGEN

UNTERGESCHOSS

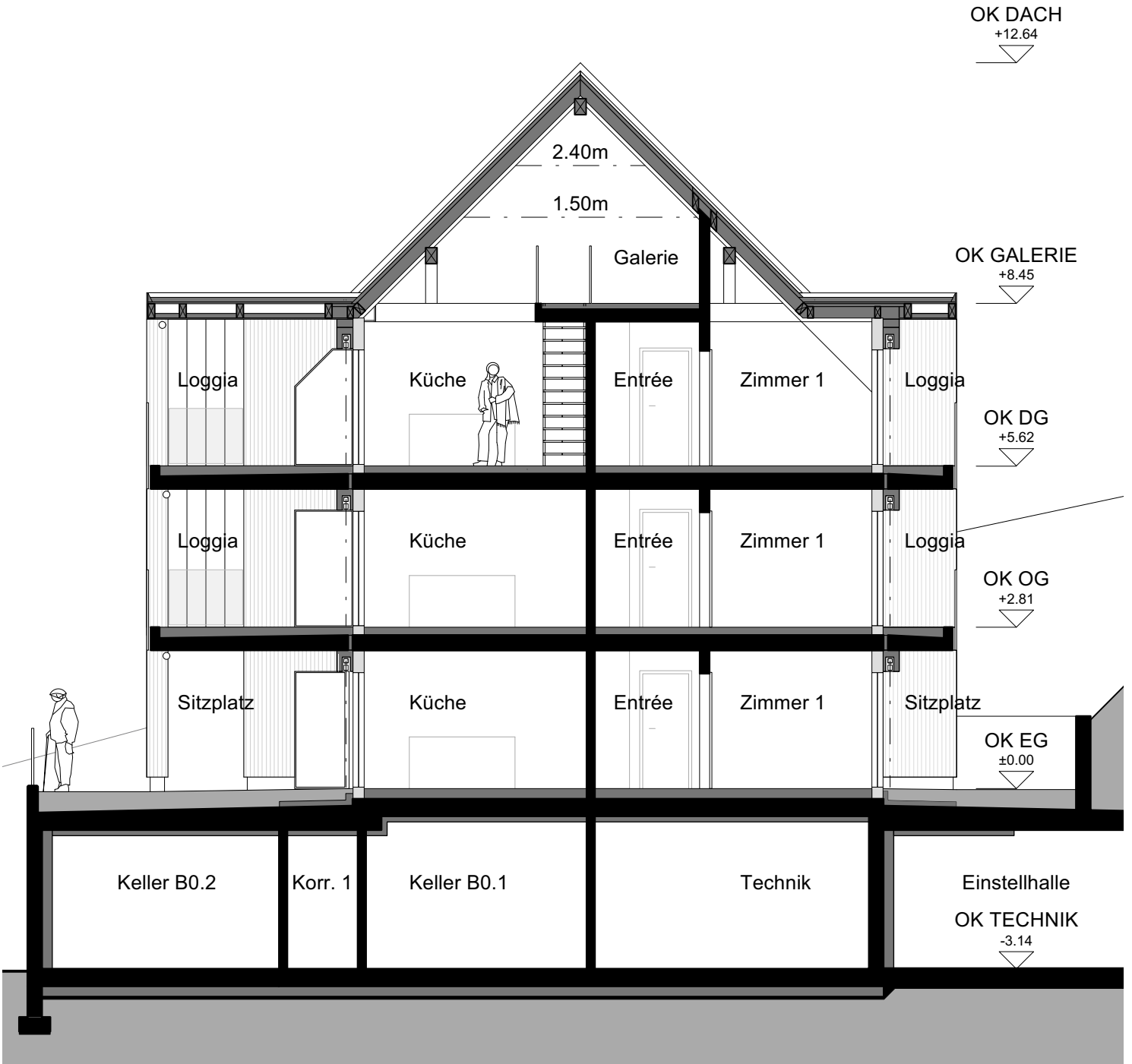


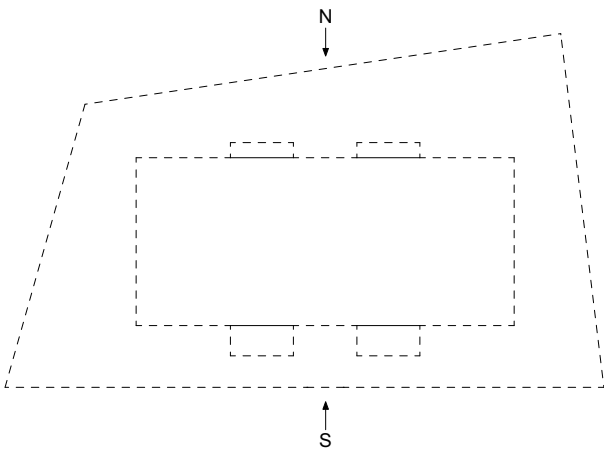
MASSTAB 1:100



MEHRFAMILIENHAUS B
TALACHER
3068 UTZIGEN

SCHNITT A-A





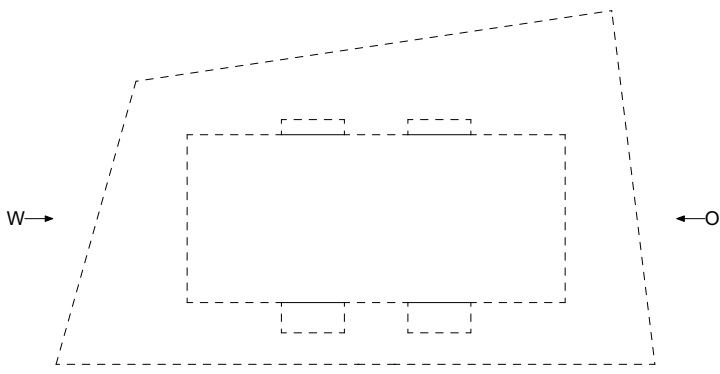
MEHRFAMILIENHAUS B
TALACHER
3068 UTZIGEN

FASSADEN NORD/SÜD

NORDFASSADE

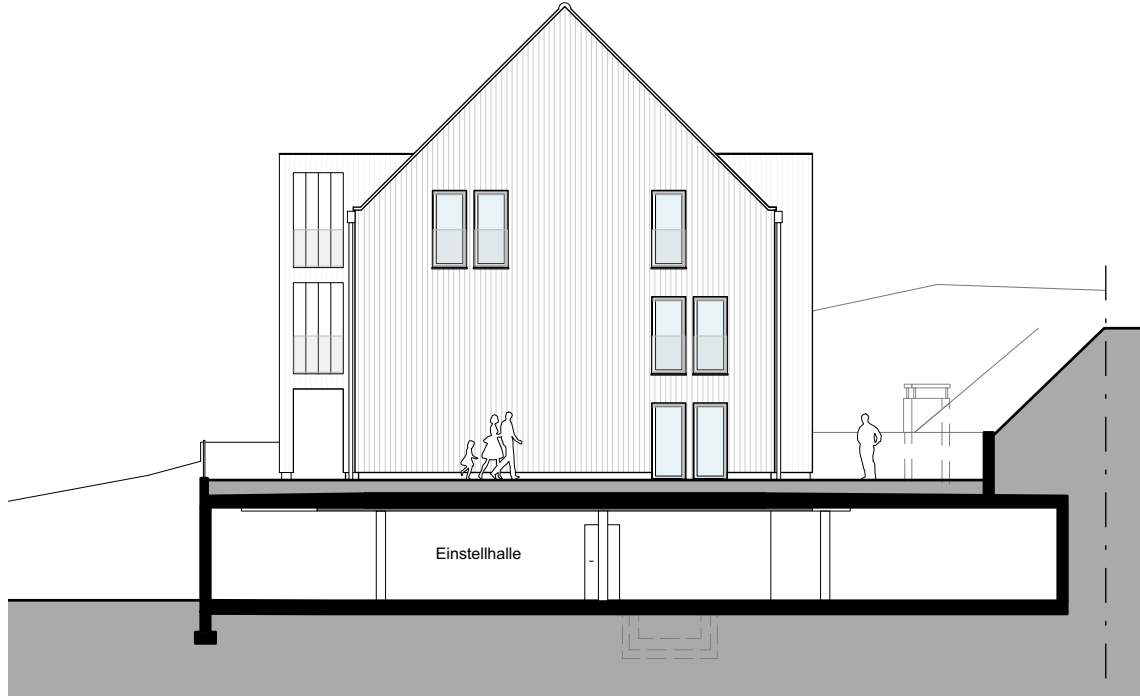


SÜDFASSADE

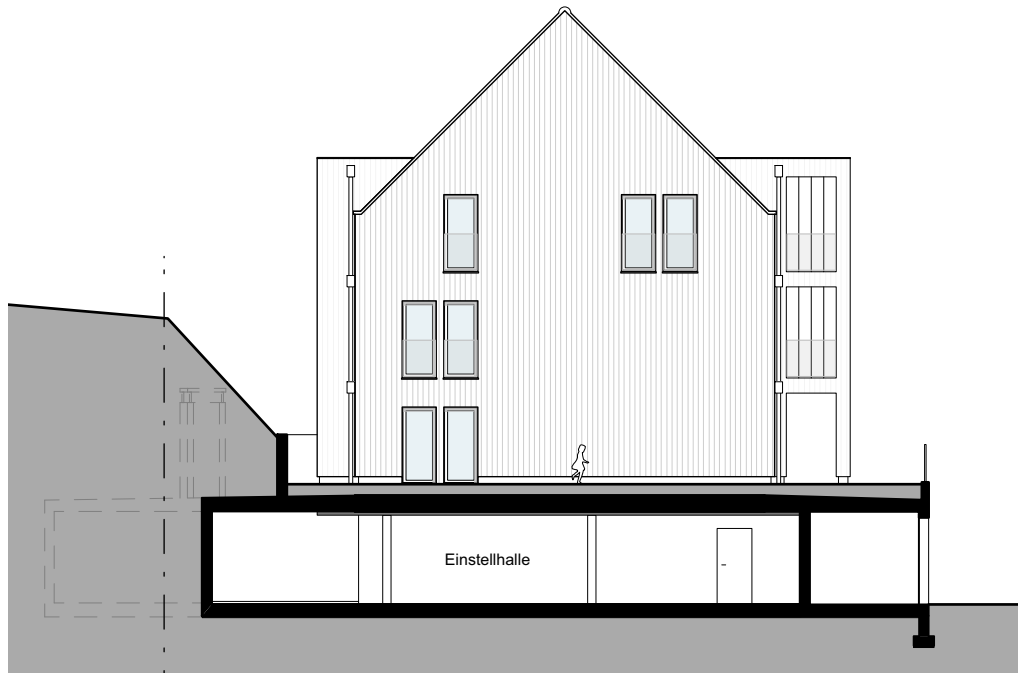


MEHRFAMILIENHAUS B
TALACHER
3068 UTZIGEN

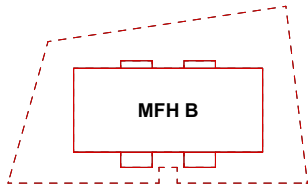
FASSADEN OST/WEST



OSTFASSADE



WESTFASSADE



MEHRFAMILIENHAUS B
TALACHER
3068 UTZIGEN

EINSTELLHALLE/KELLER

