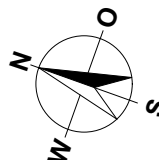
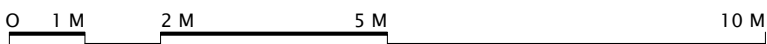
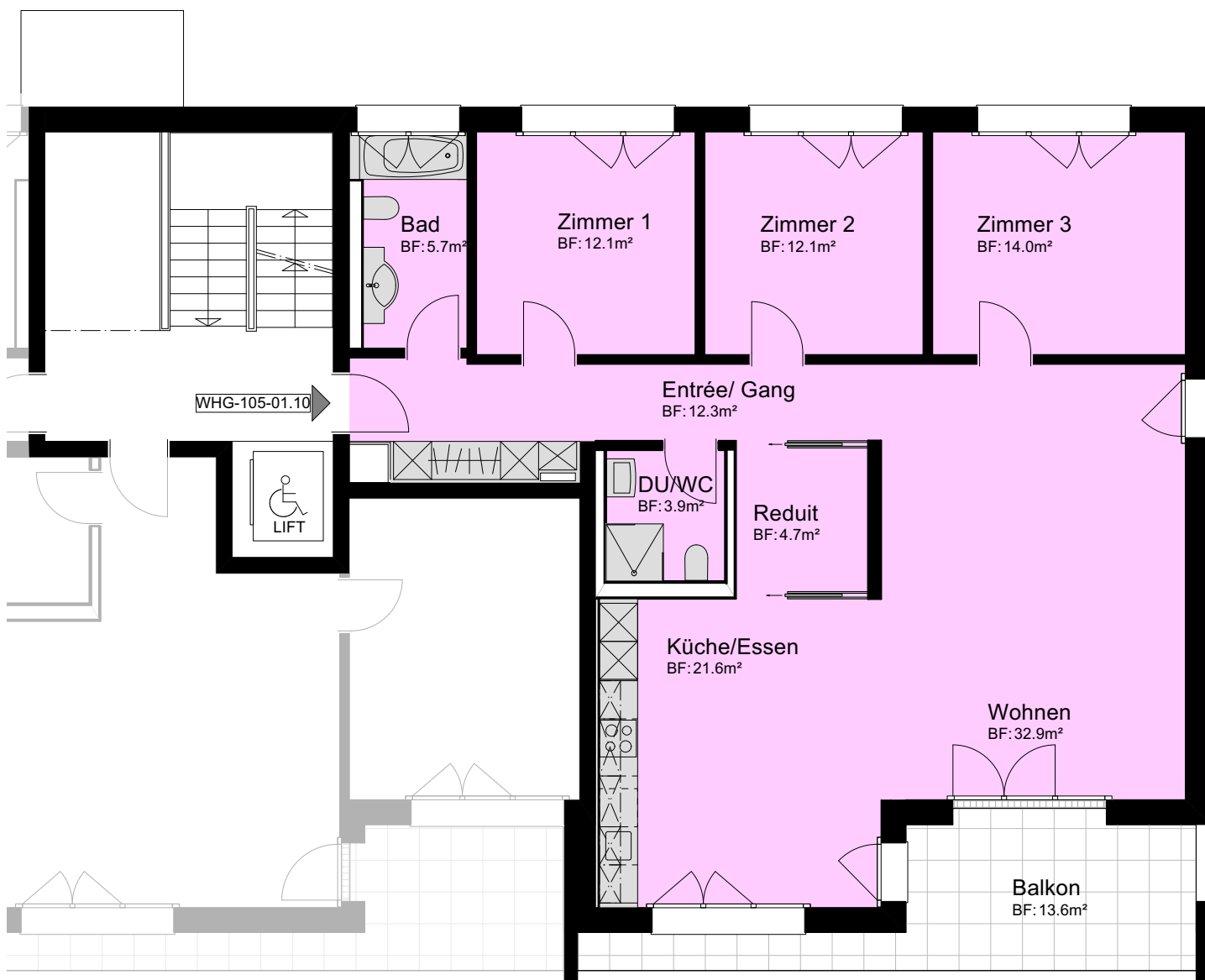
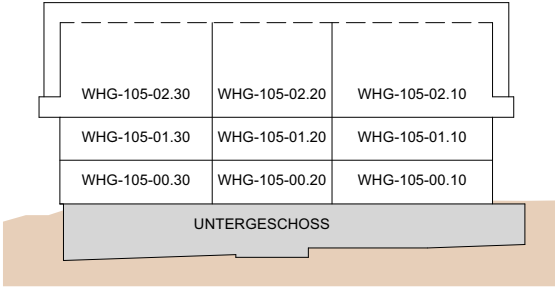


MEHRFAMILIENHAUS  
 ZILMATTSTRASSE 105  
 3255 RAPPERSWIL (BE)  
 4.5 ZIMMER

WOHNUNG: WHG-105-01.10, OG  
 KELLER: 17.0 m<sup>2</sup>  
 BALKON: 13.5 m<sup>2</sup>  
 NETTOWOHNFLÄCHE: 119.0 m<sup>2</sup>

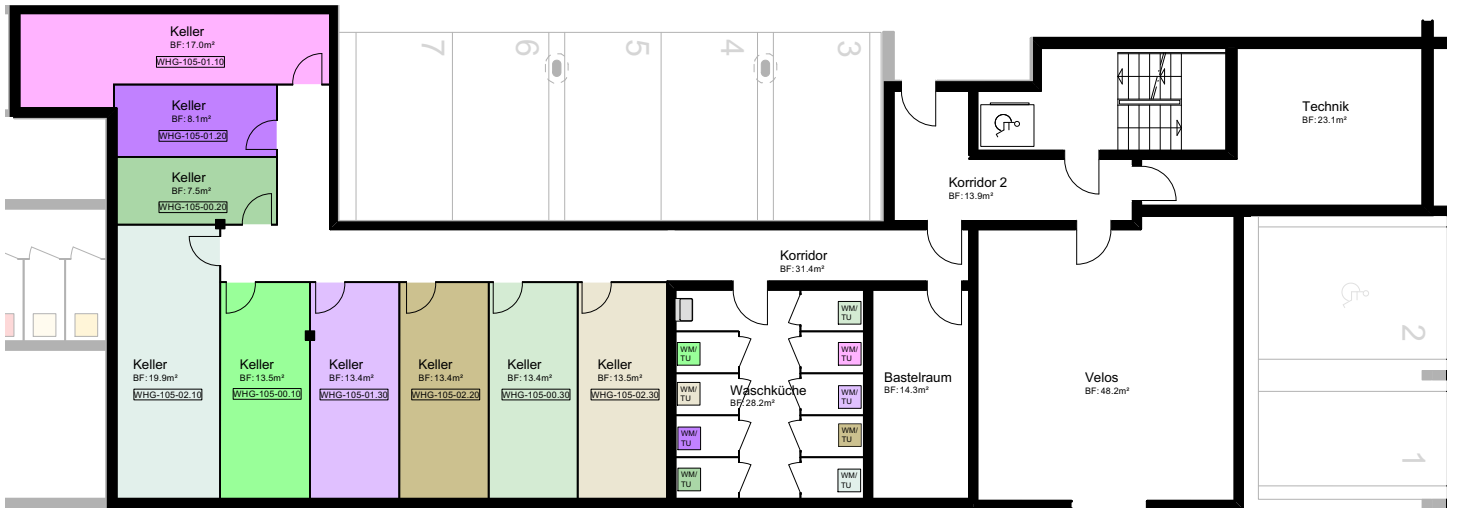


MASSTAB 1:100

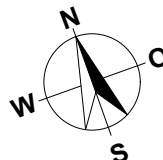


MEHRFAMILIENHAUS  
ZILMATTSTRASSE 105  
3255 RAPPERSWIL (BE)

HAUS 105  
UNTERGESCHOSS



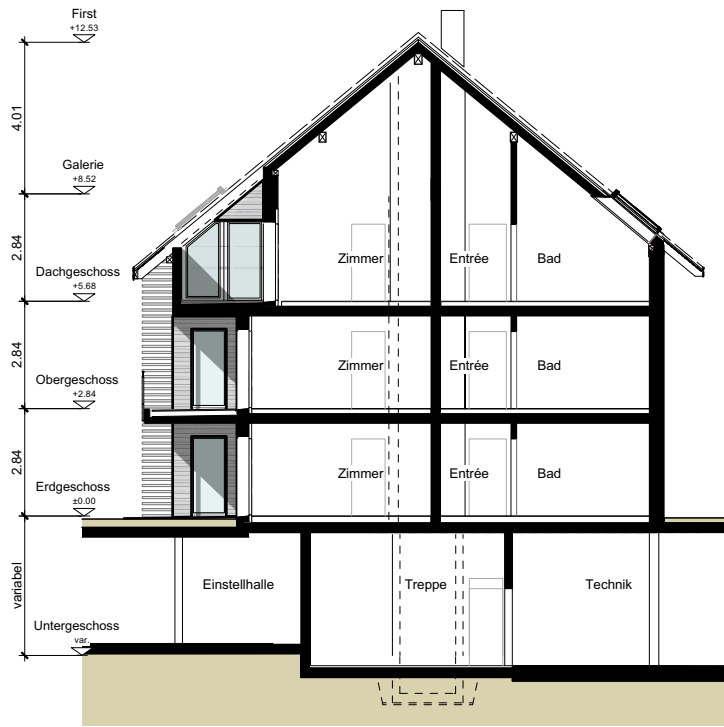
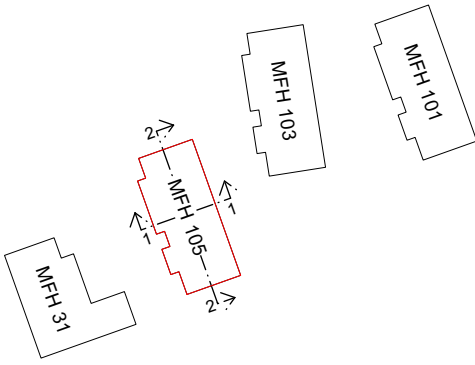
0 1 M 2 M 5 M 10 M



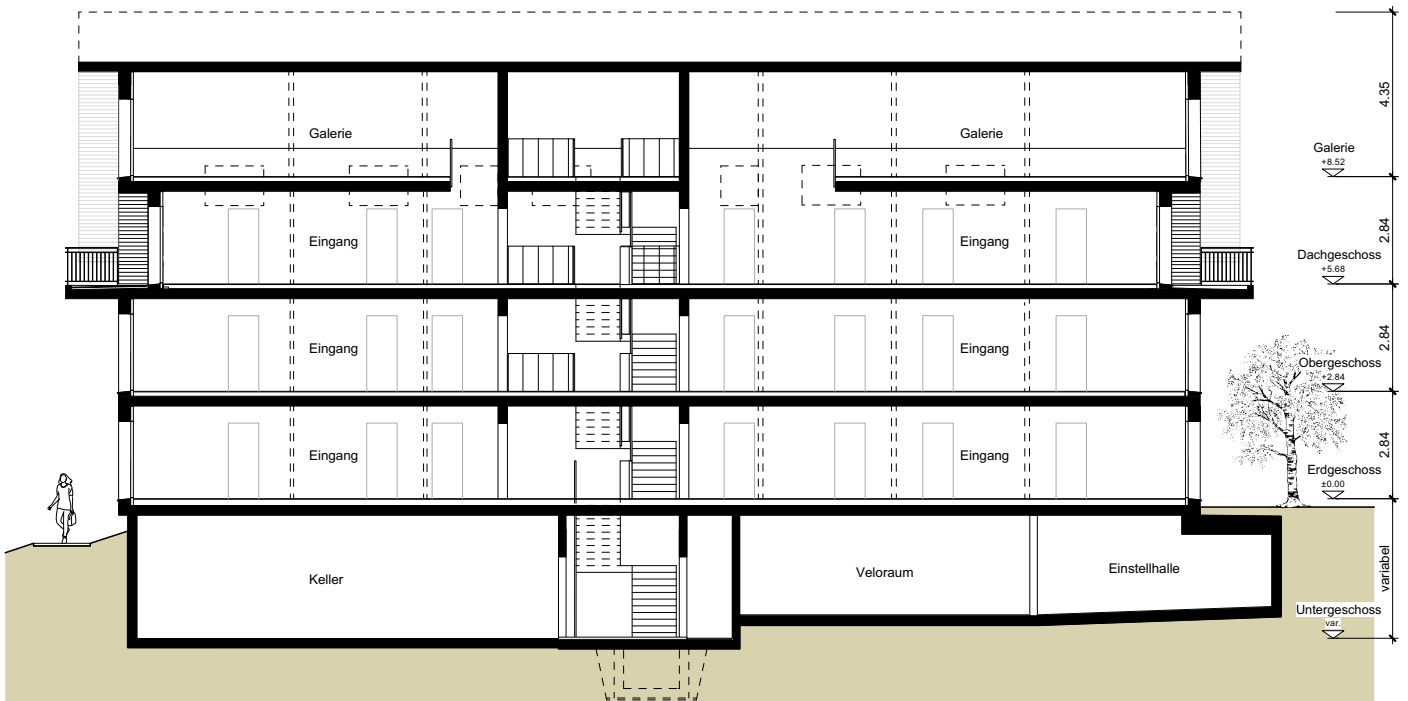
MASSTAB 1:200

MEHRFAMILIENHAUS  
ZILMATTSTRASSE 105  
3255 RAPPERSWIL (BE)

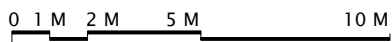
HAUS 105  
SCHNITTE



SCHNITT 1-1



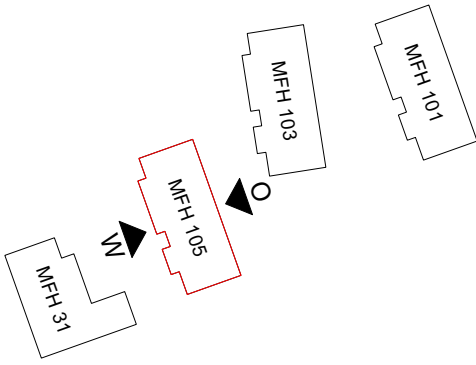
SCHNITT 2-2



MASSTAB 1:200

MEHRFAMILIENHAUS  
ZILMATTSTRASSE 105  
3255 RAPPERSWIL (BE)

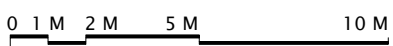
HAUS 105  
FASSADEN



OSTEN



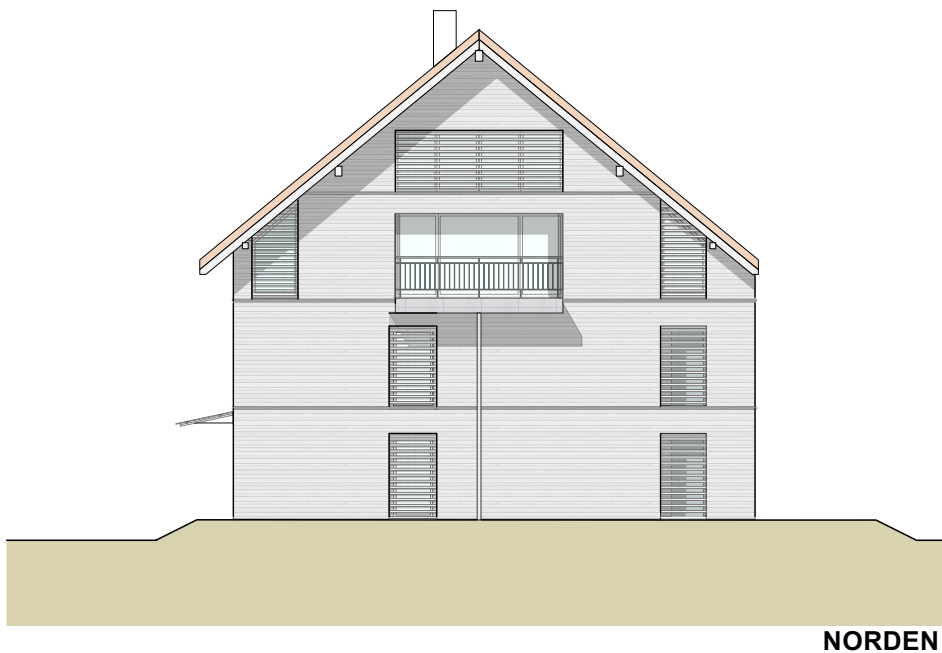
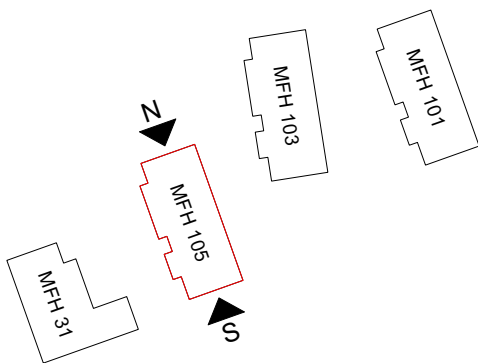
WESTEN



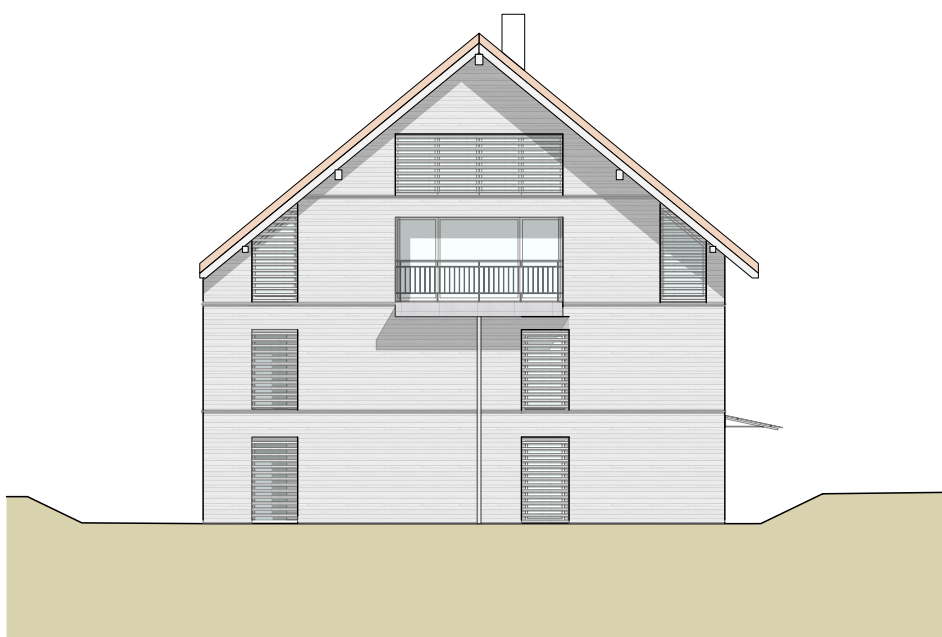
MASSTAB 1:200

MEHRFAMILIENHAUS  
ZILMATTSTRASSE 105  
3255 RAPPERSWIL (BE)

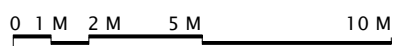
HAUS 105  
FASSADEN



NORDEN



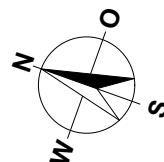
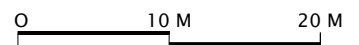
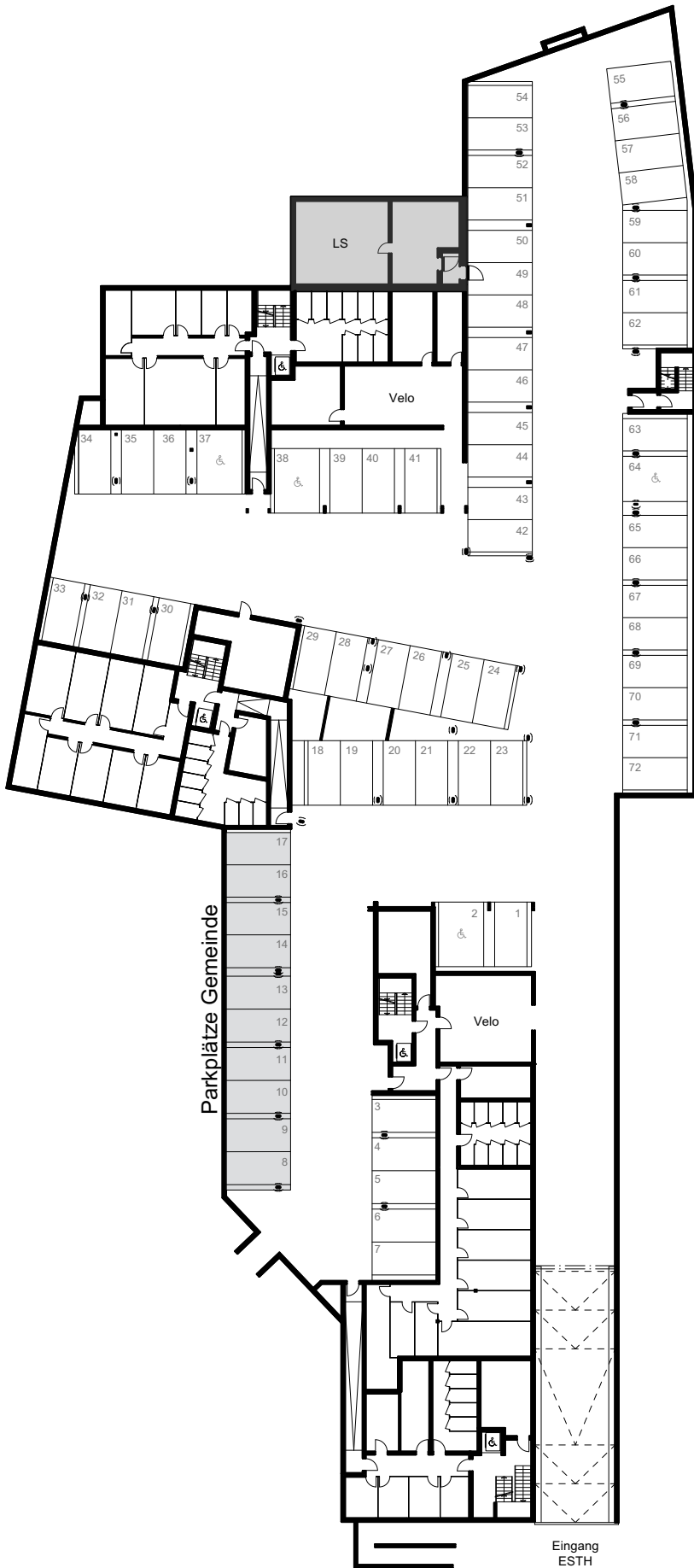
SÜDEN



MASSTAB 1:200

MEHRFAMILIENHÄUSER  
HAUPTSTRASSE 31  
ZILMATTSTRASSE 101, 103 UND 105  
3255 RAPPERSWIL (BE)

SITUATION / UNTERGESCHOSS / ESTH



MASSSTAB 1:500