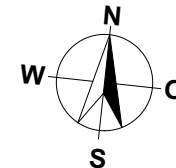
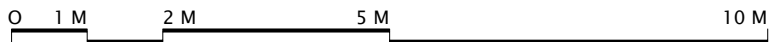
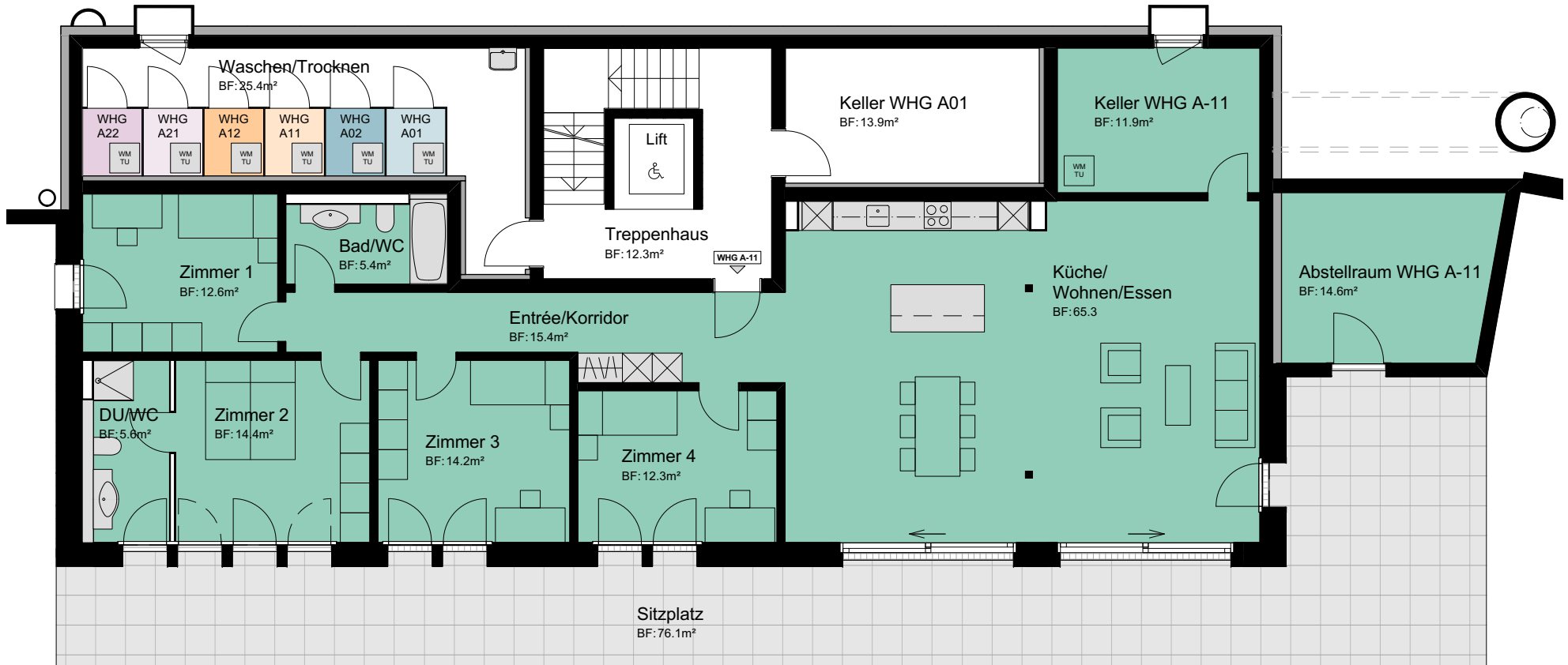
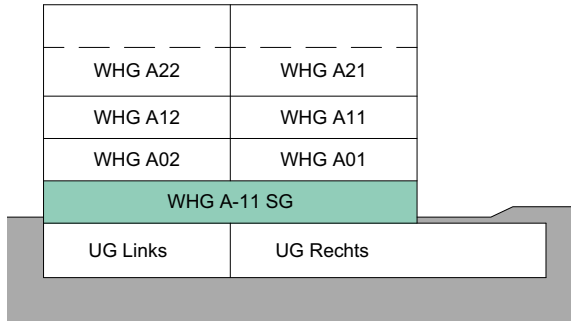


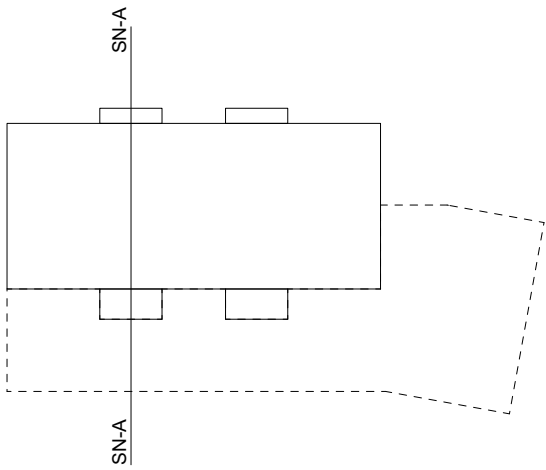
MEHRFAMILIENHAUS A
TALACHER
3068 UTZIGEN

5.5 ZIMMER

WOHNUNG:	WHG A-11 SG
KELLER:	12.0 m ²
SITZPLATZ/ABSTELLRAUM:	90.5 m ²
NETTOWOHNFLÄCHE:	145.0 m ²

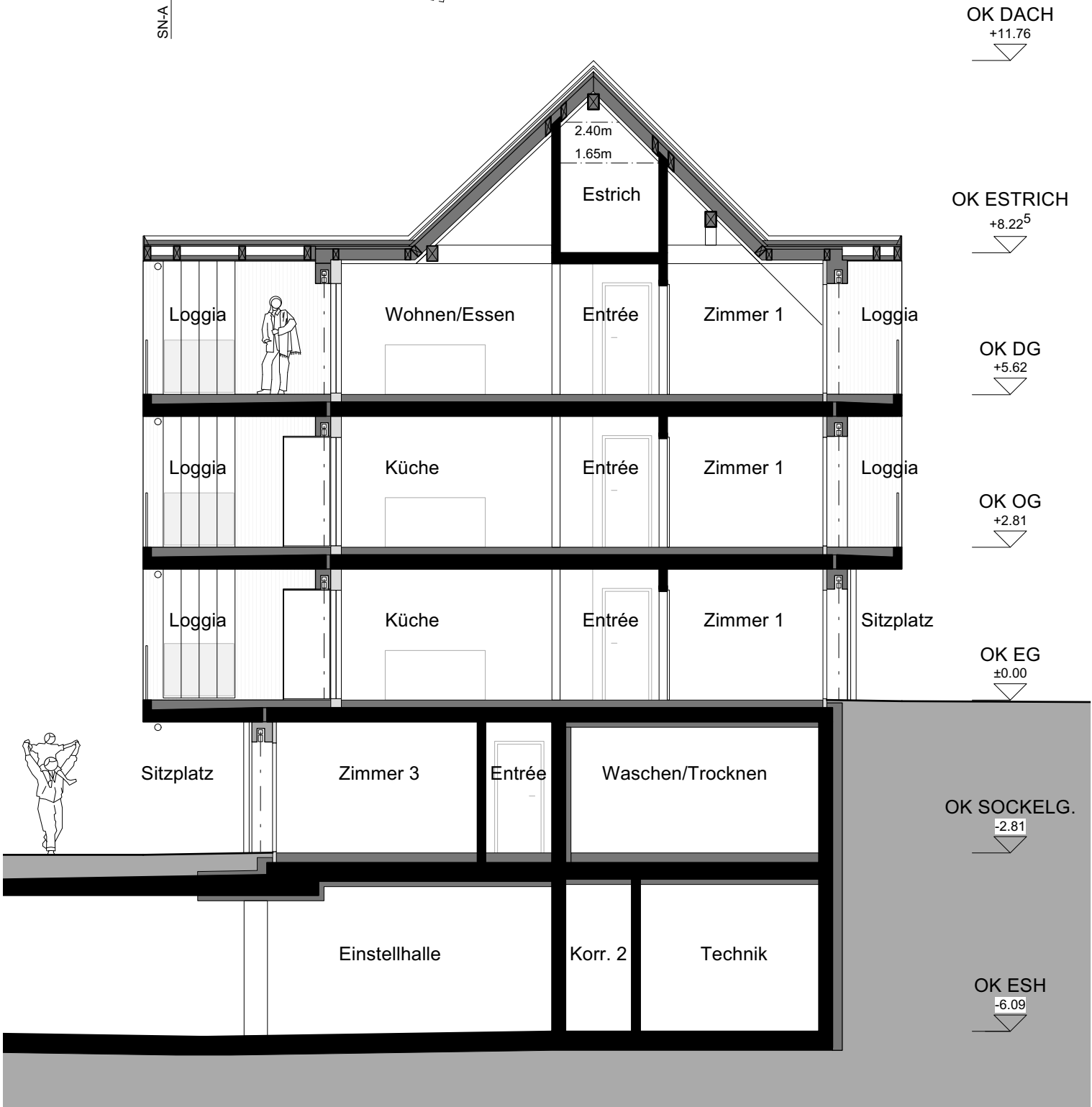


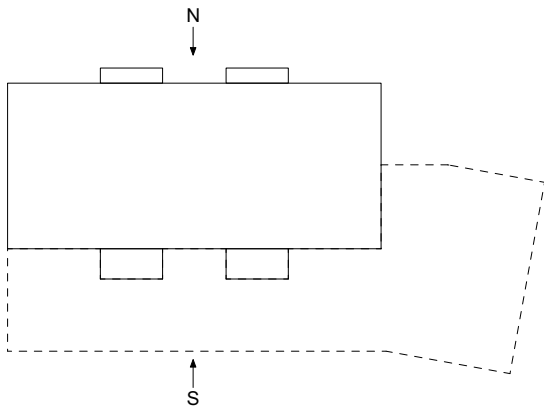
MASSSTAB 1:120



MEHRFAMILIENHAUS A
TALACHER
3068 UTZIGEN

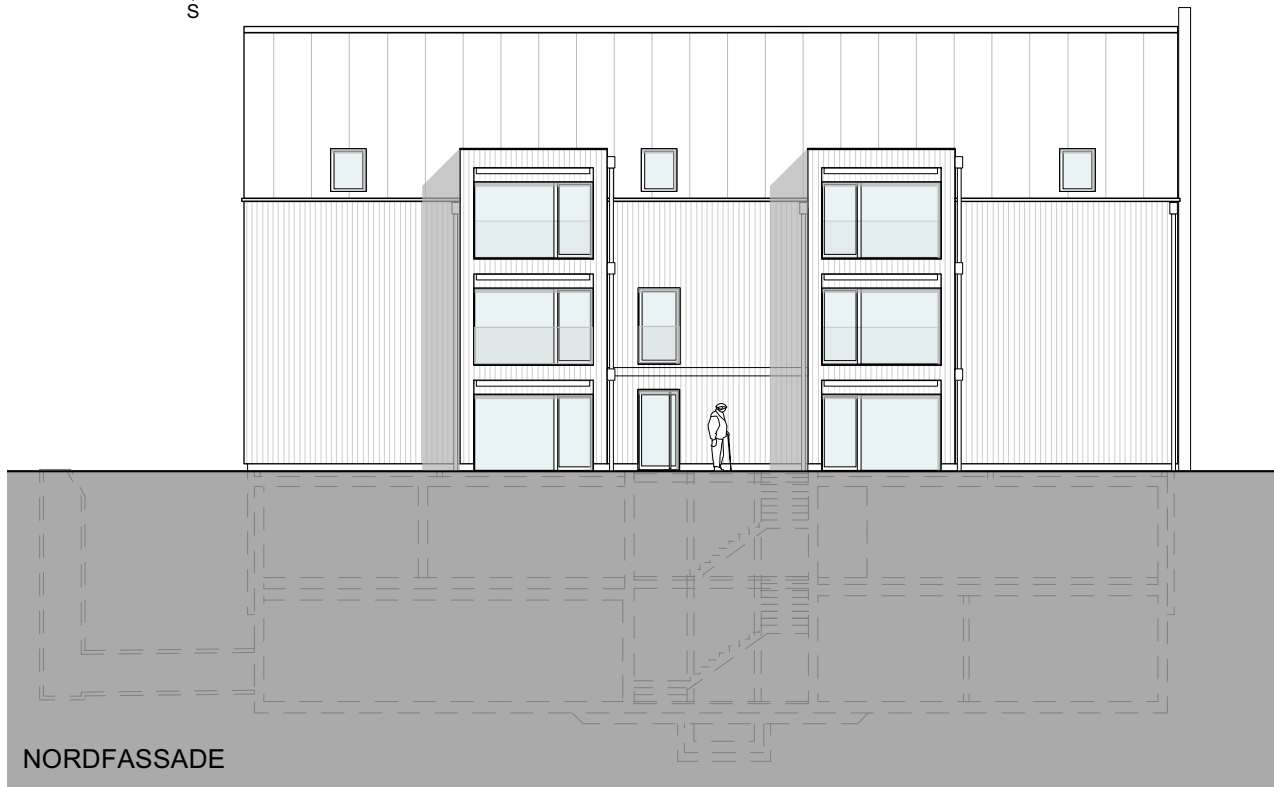
SCHNITT A-A

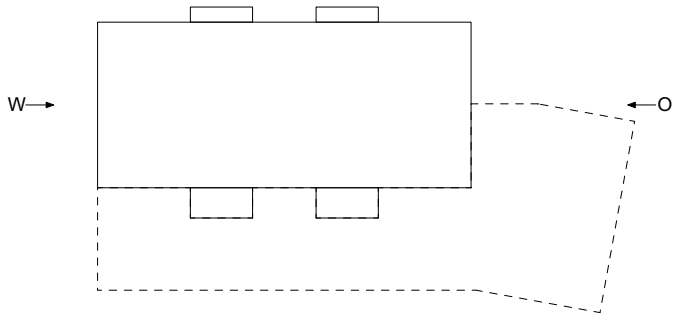




MEHRFAMILIENHAUS A
TALACHER
3068 UTZIGEN

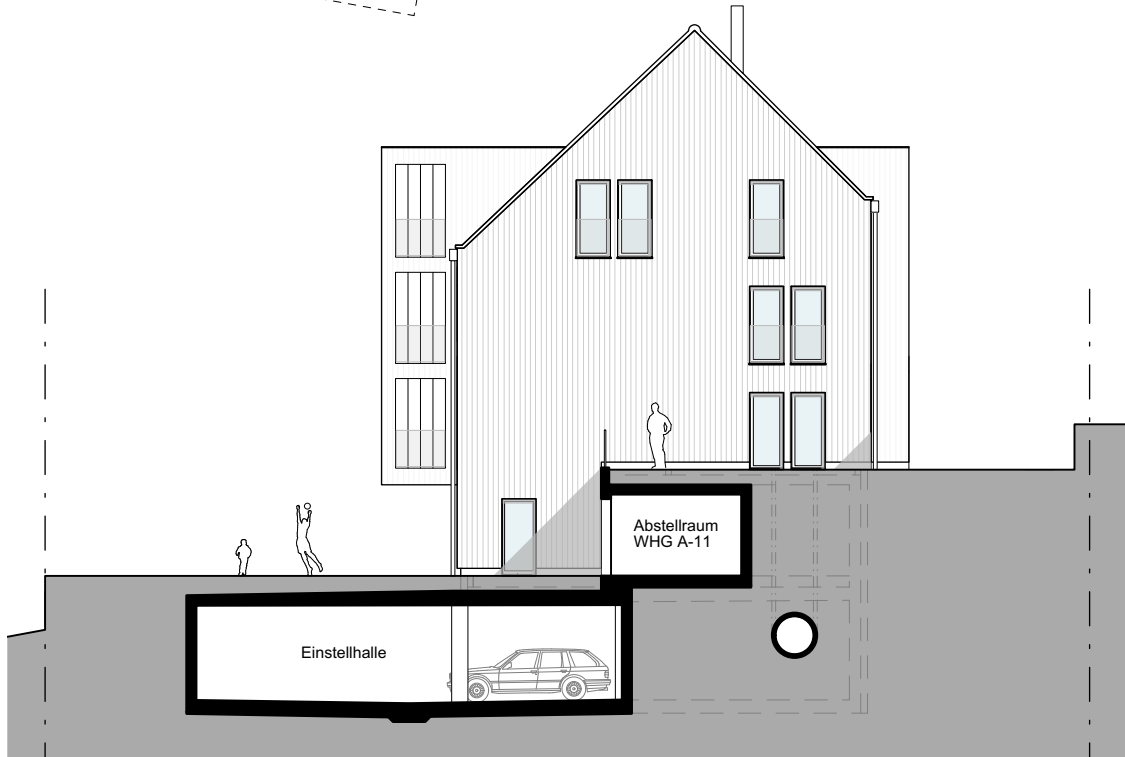
FASSADEN NORD/SÜD



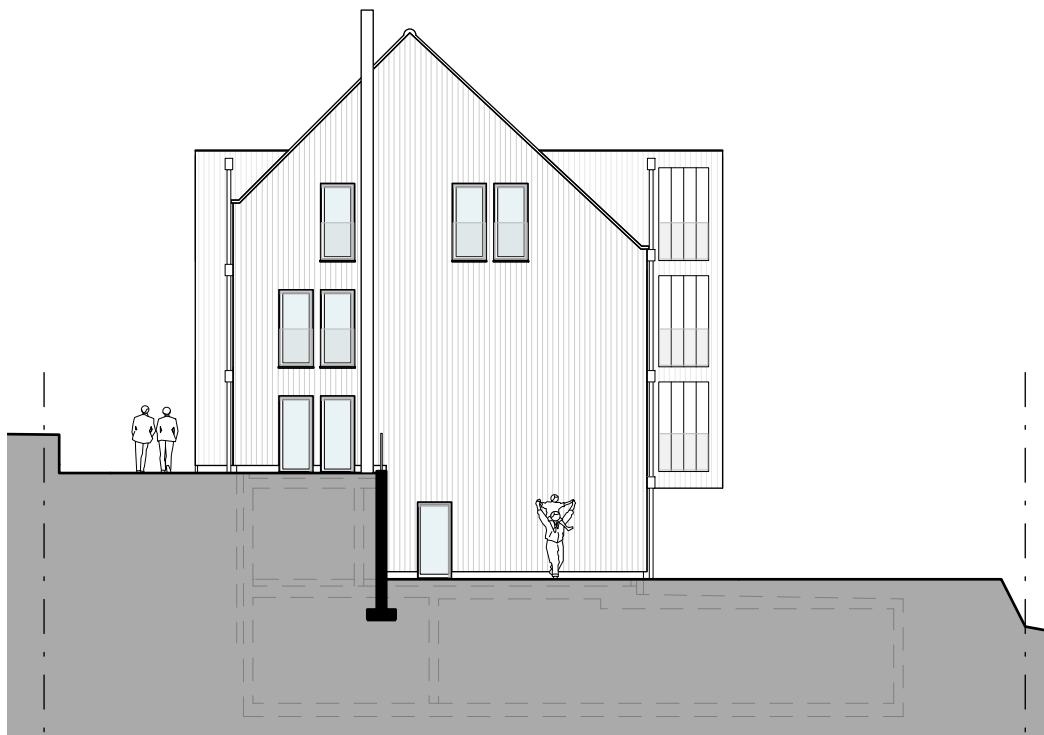


MEHRFAMILIENHAUS A
TALACHER
3068 UTZIGEN

FASSADEN OST/WEST



OSTFASSADE



WESTFASSADE

MEHRFAMILIENHAUS A
TALACHER
3068 UTZIGEN

EINSTELLHALLE/KELLER

