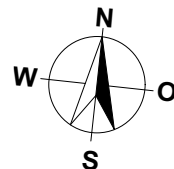
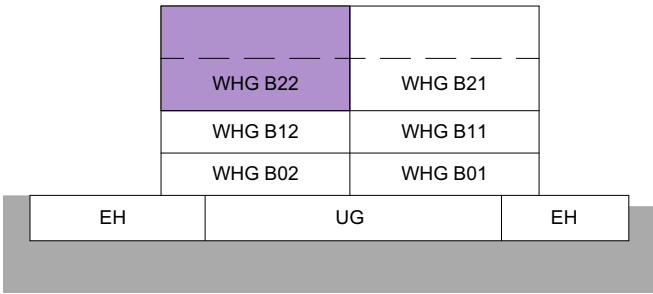


MEHRFAMILIENHAUS B  
TALACHER  
3068 UTZIGEN

3.5 ZIMMER MIT GALERIE

WOHNUNG:	WHG B22 DG
KELLER:	6.0 m <sup>2</sup>
LOGGIEN:	14.5 m <sup>2</sup>
GESAMTE WOHNFLÄCHE:	105.0 m <sup>2</sup>



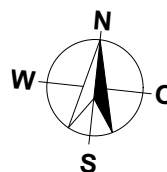
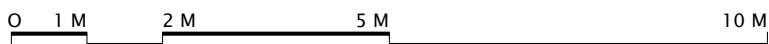
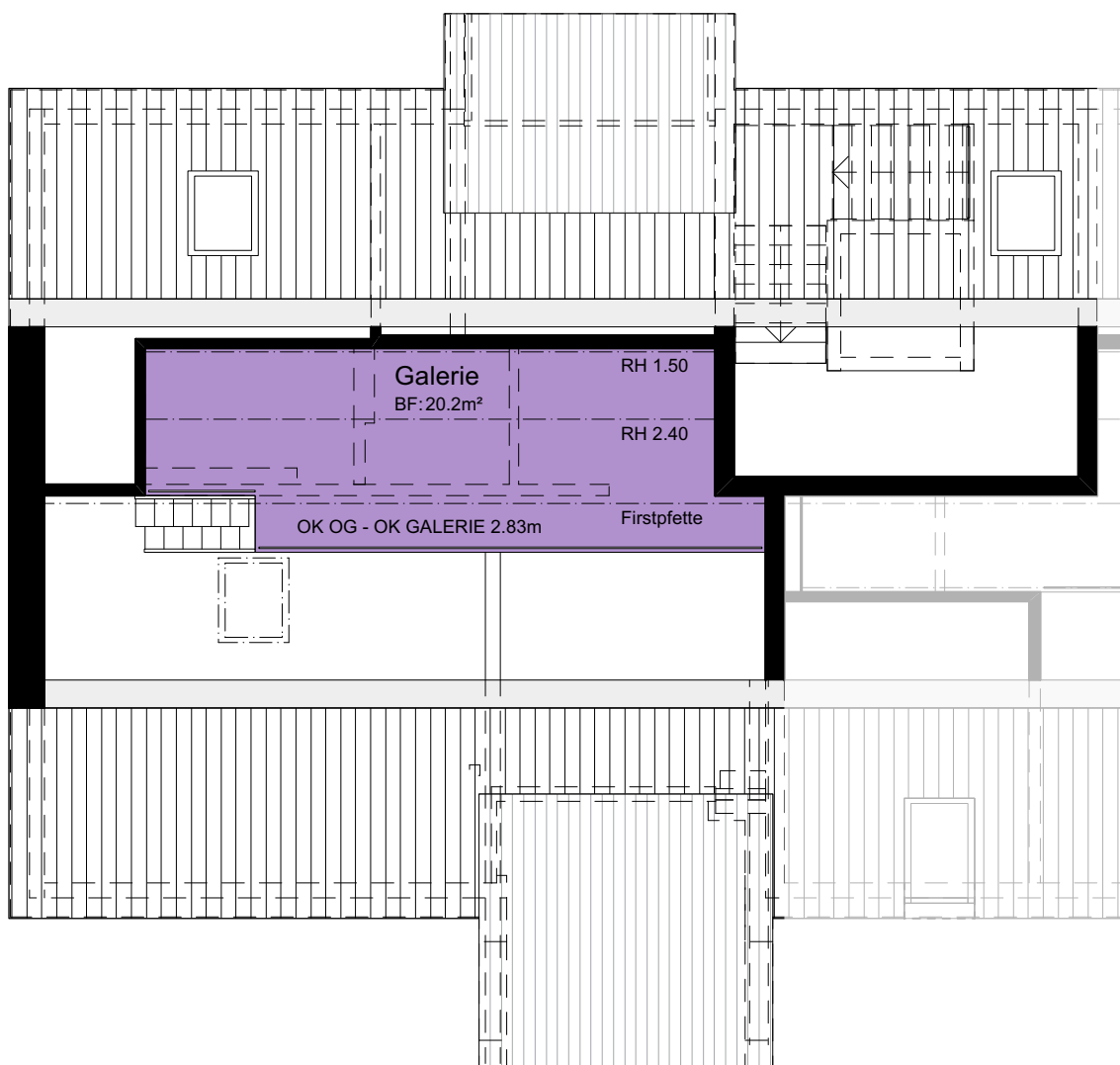
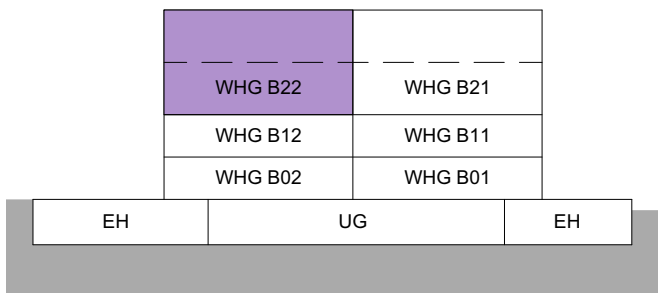
MASSTAB 1:100

MEHRFAMILIENHAUS B  
TALACHER  
3068 UTZIGEN

3.5 ZIMMER MIT GALERIE

WOHNUNG:  
GALERIE

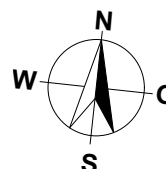
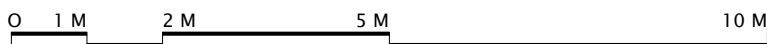
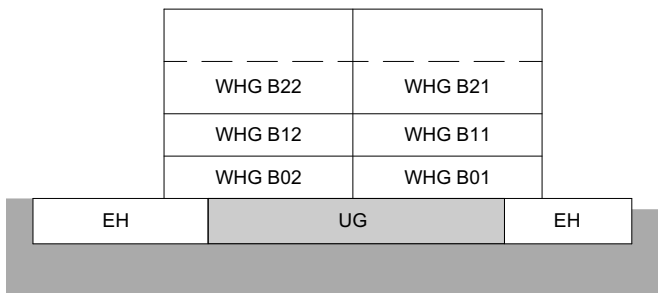
WHG B22 Galerie  
20.2 m<sup>2</sup>



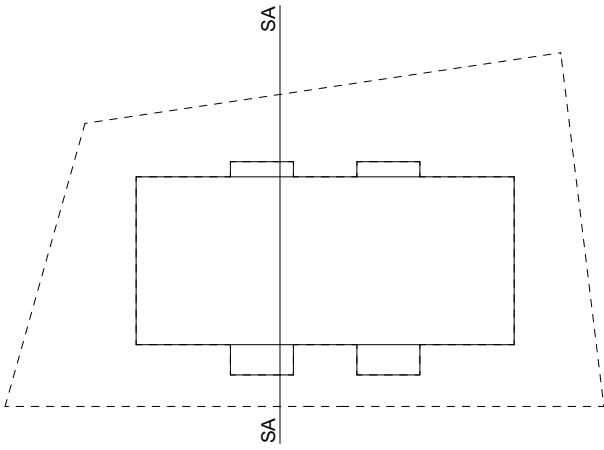
MASSTAB 1:100

MEHRFAMILIENHAUS B  
TALACHER  
3068 UTZIGEN

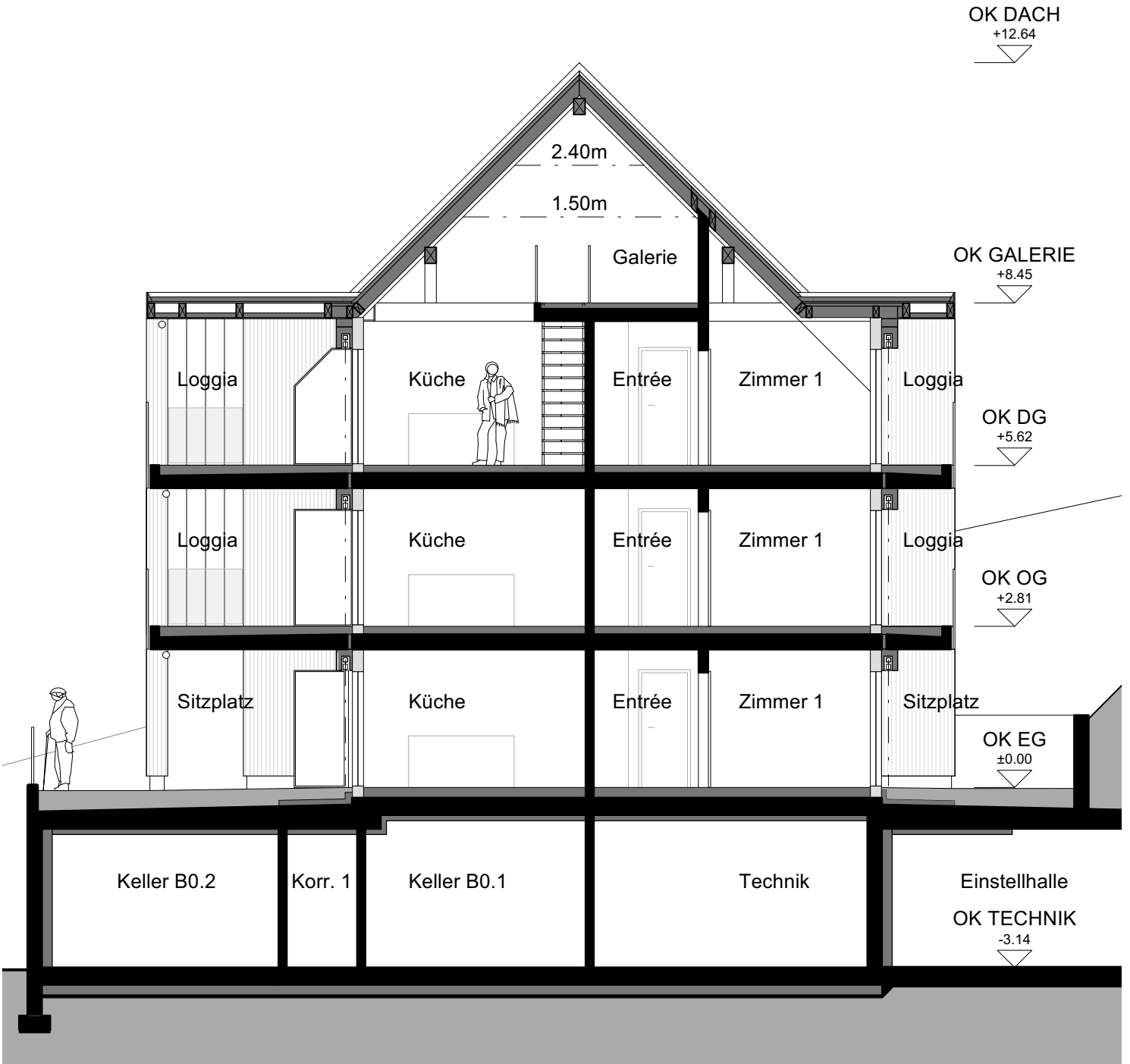
UNTERGESCHOSS

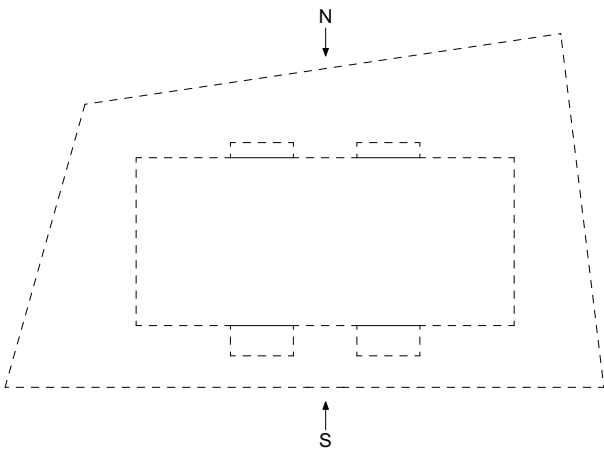


MASSTAB 1:100



MEHRFAMILIENHAUS B  
 TALACHER  
 3068 UTZIGEN  
 SCHNITT A-A





MEHRFAMILIENHAUS B  
TALACHER  
3068 UTZIGEN

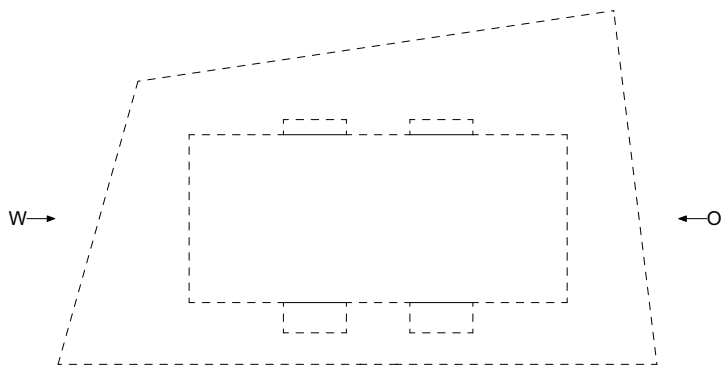
FASSADEN NORD/SÜD

NORDFASSADE



SÜDFASSADE



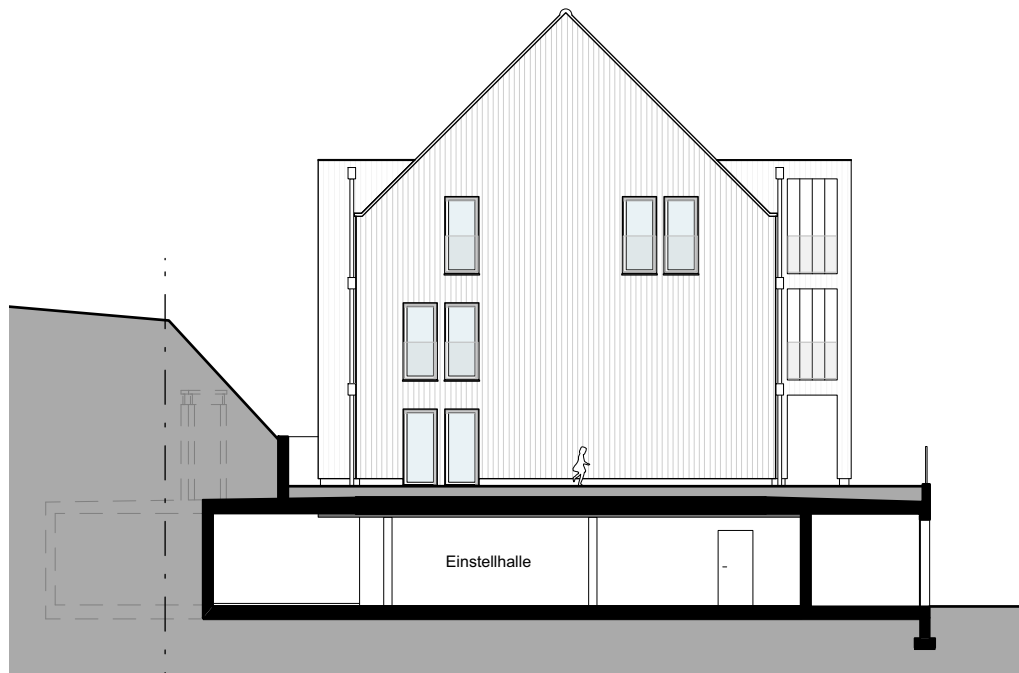


MEHRFAMILIENHAUS B  
TALACHER  
3068 UTZIGEN

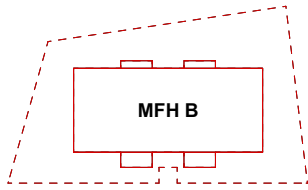
FASSADEN OST/WEST



OSTFASSADE



WESTFASSADE



MEHRFAMILIENHAUS B  
TALACHER  
3068 UTZIGEN

EINSTELLHALLE/KELLER

