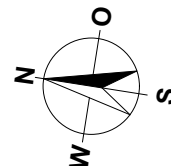
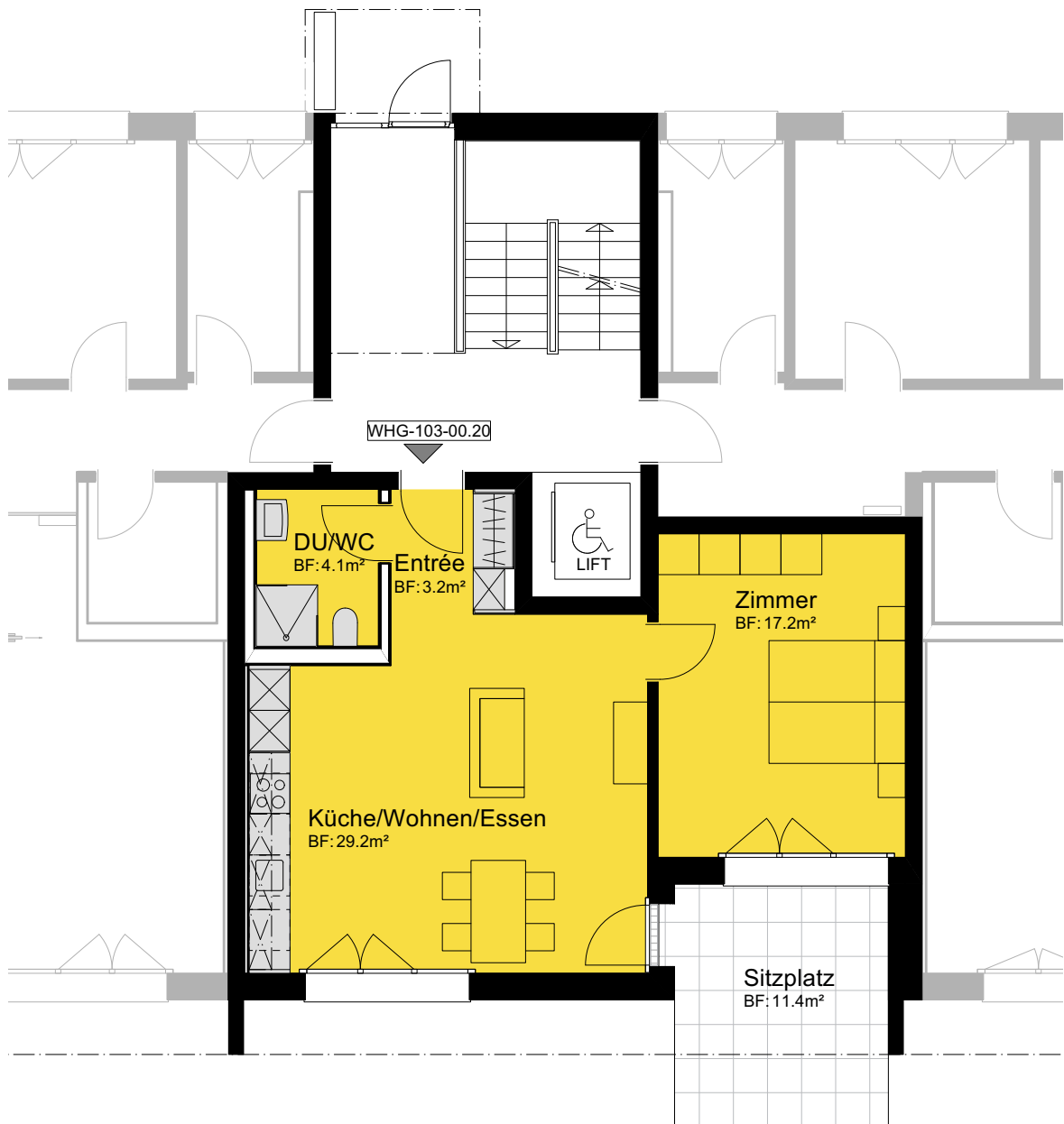


MEHRFAMILIENHAUS
 ZILMATTSTRASSE 103
 3255 RAPPERSWIL (BE)
 2.5 ZIMMER

WOHNUNG: WHG-103-00.20, EG
 KELLER: 11.0 m²
 SITZPLATZ: 11.5 m²
 NETTOWOHNFLÄCHE: 53.5 m²



MASSTAB 1:100

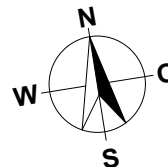
WHG-103-02.30	WHG-103-02.20	WHG-103-02.10
WHG-103-01.30	WHG-103-01.20	WHG-103-01.10
WHG-103-00.30	WHG-103-00.20	WHG-103-00.10
UNTERGESCHOSS		

MEHRFAMILIENHAUS
ZILMATTSTRASSE 103
3255 RAPPERSWIL (BE)

HAUS 103
UNTERGESCHOSS



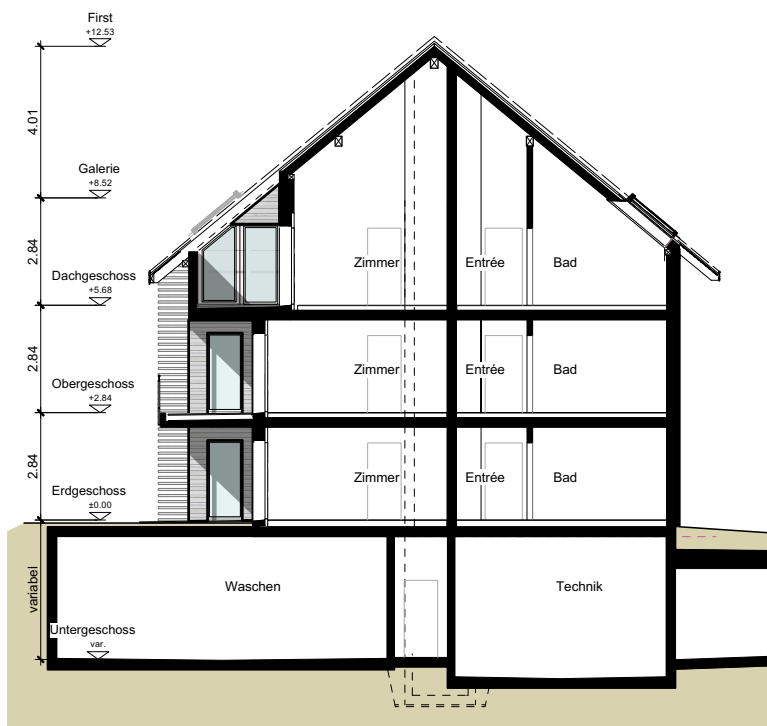
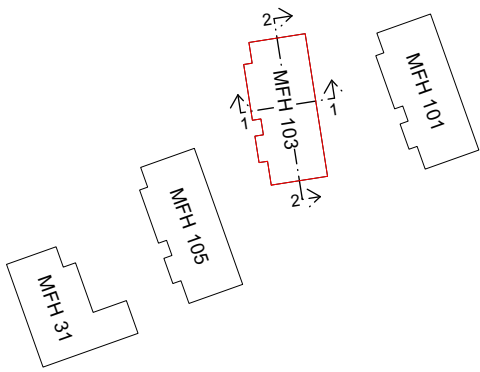
0 5 M 10 M



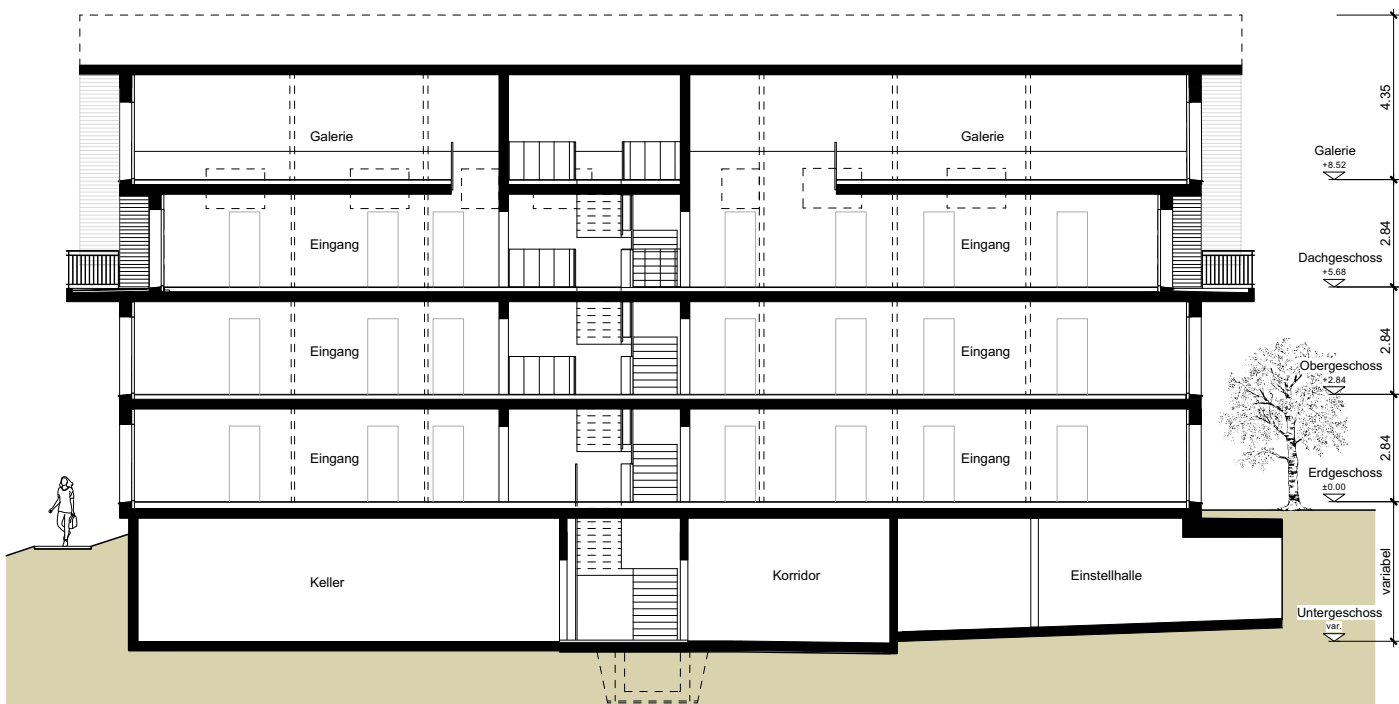
MASSTAB 1:150

MEHRFAMILIENHAUS
ZILMATTSTRASSE 103
3255 RAPPERSWIL (BE)

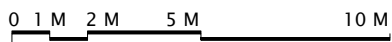
HAUS 103
SCHNITTE



SCHNITT 1-1



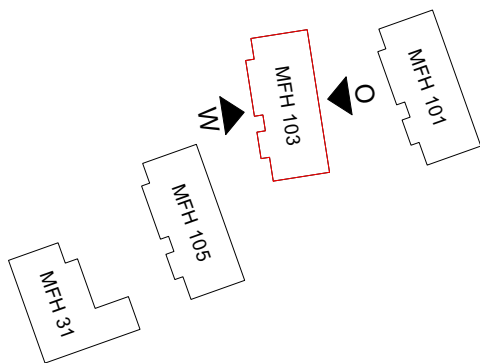
SCHNITT 2-2



MASSTAB 1:200

MEHRFAMILIENHAUS
ZILMATTSTRASSE 103
3255 RAPPERSWIL (BE)

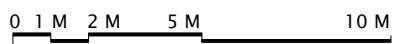
HAUS 103
FASSADEN



OSTEN



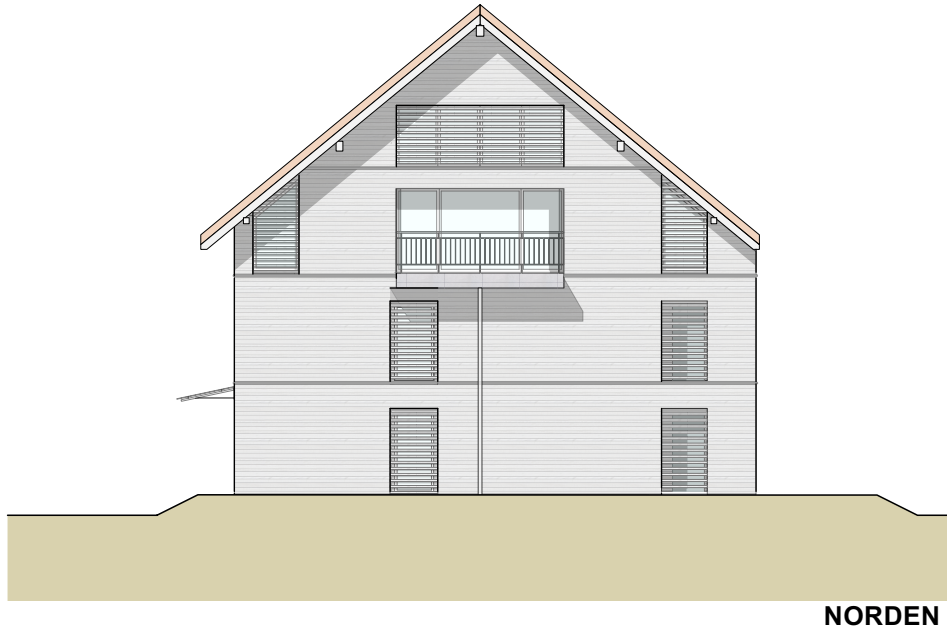
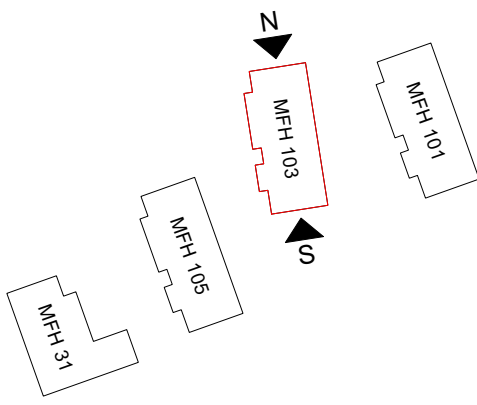
WESTEN



MASSTAB 1:200

MEHRFAMILIENHAUS
ZILMATTSTRASSE 103
3255 RAPPERSWIL (BE)

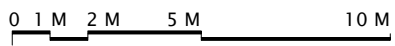
HAUS 103
FASSADEN



NORDEN



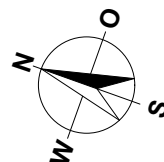
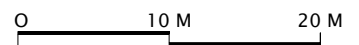
SÜDEN



MASSTAB 1:200

MEHRFAMILIENHÄUSER
HAUPTSTRASSE 31
ZILMATTSTRASSE 101, 103 UND 105
3255 RAPPERSWIL (BE)

SITUATION / UNTERGESCHOSS / ESTH



MASSSTAB 1:500