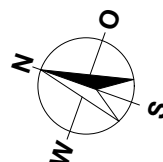
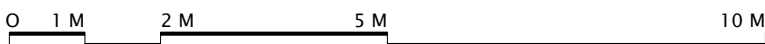
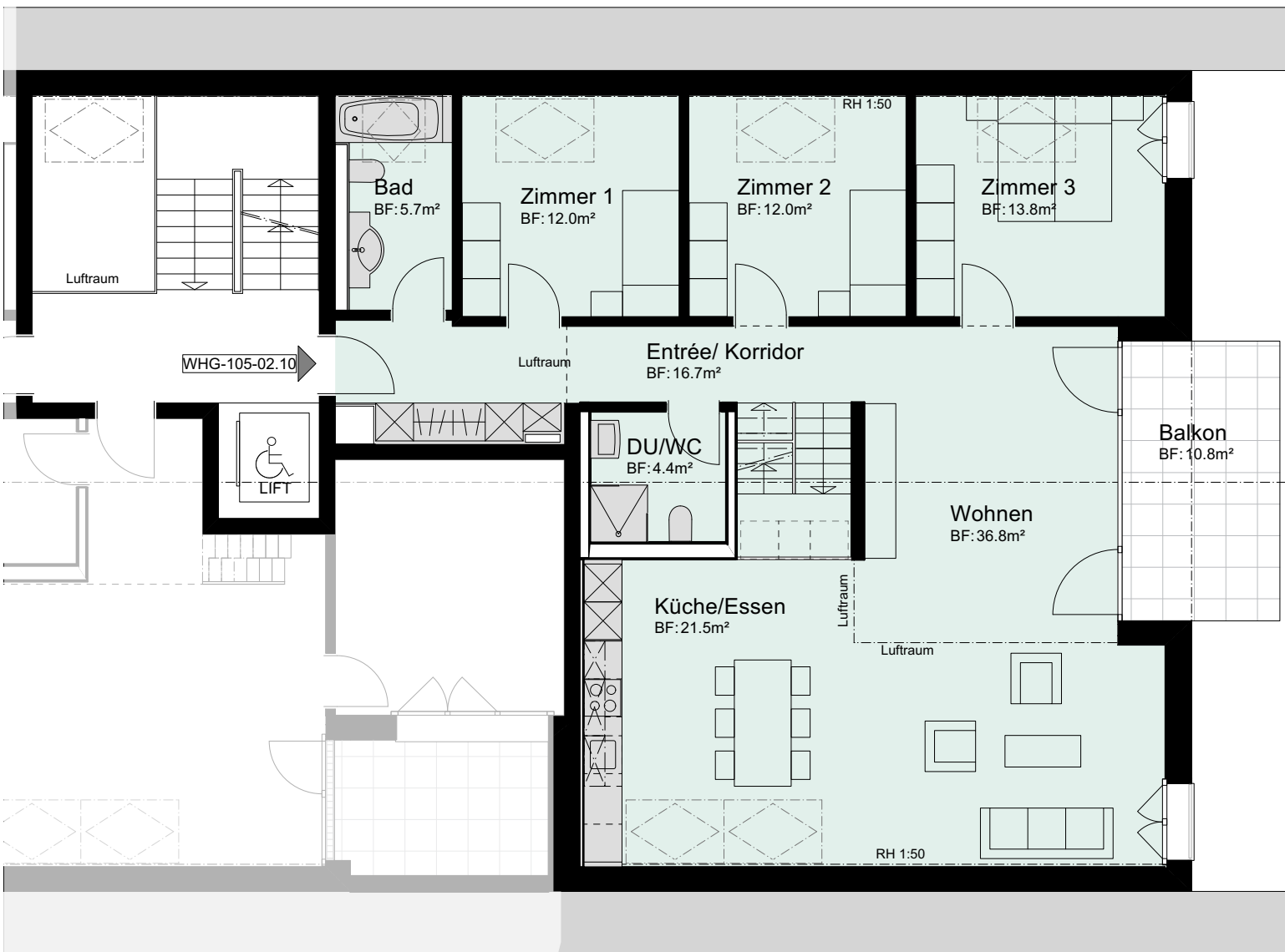
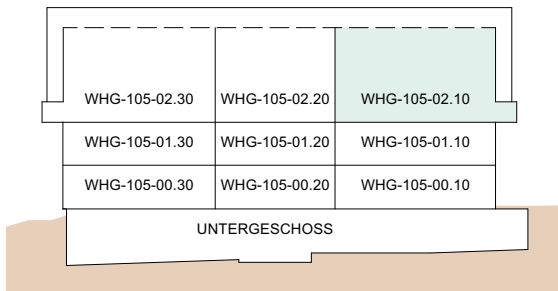


**MEHRFAMILIENHAUS
ZILMATTSTRASSE 105
3255 RAPPERSWIL (BE)
4.5 ZIMMER**

WOHNUNG: WHG-105-02.10, DG
KELLER: 20.0 m²
BALKON: 11.0 m²
NETTOWOHNFLÄCHE DG: 123.0 m²
NETTOWOHNFLÄCHE GALERIE: 35.5 m²
NETTOWOHNFLÄCHE TOTAL: 158.5 m²

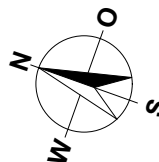
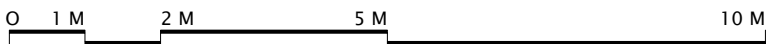
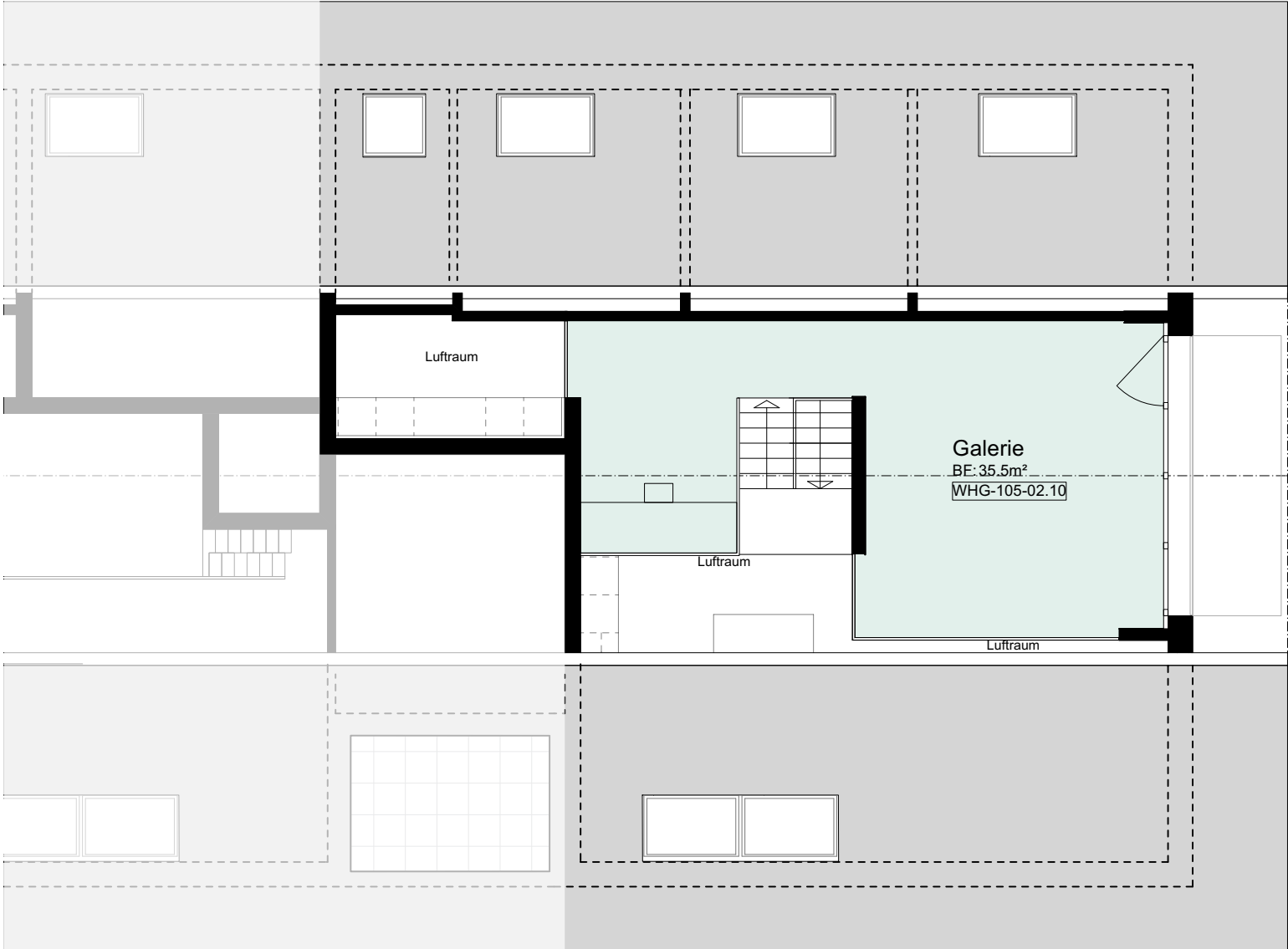


MASSTAB 1:100

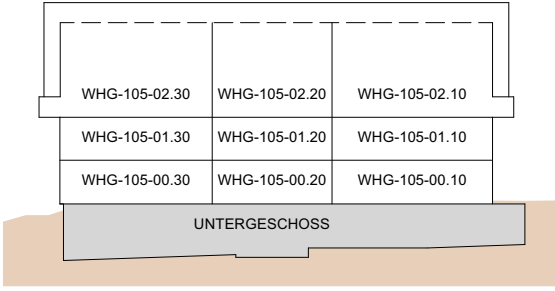


MEHRFAMILIENHAUS
 ZILMATTSTRASSE 105
 3255 RAPPERSWIL (BE)
 4.5 ZIMMER

WOHNUNG: WHG-105-02.10, Galerie
 KELLER: 20.0 m²
 BALKON: 11.0 m²
 NETTOWOHNFLÄCHE DG: 123.0 m²
 NETTOWOHNFLÄCHE GALERIE: 35.5 m²
 NETTOWOHNFLÄCHE TOTAL: 158.5 m²

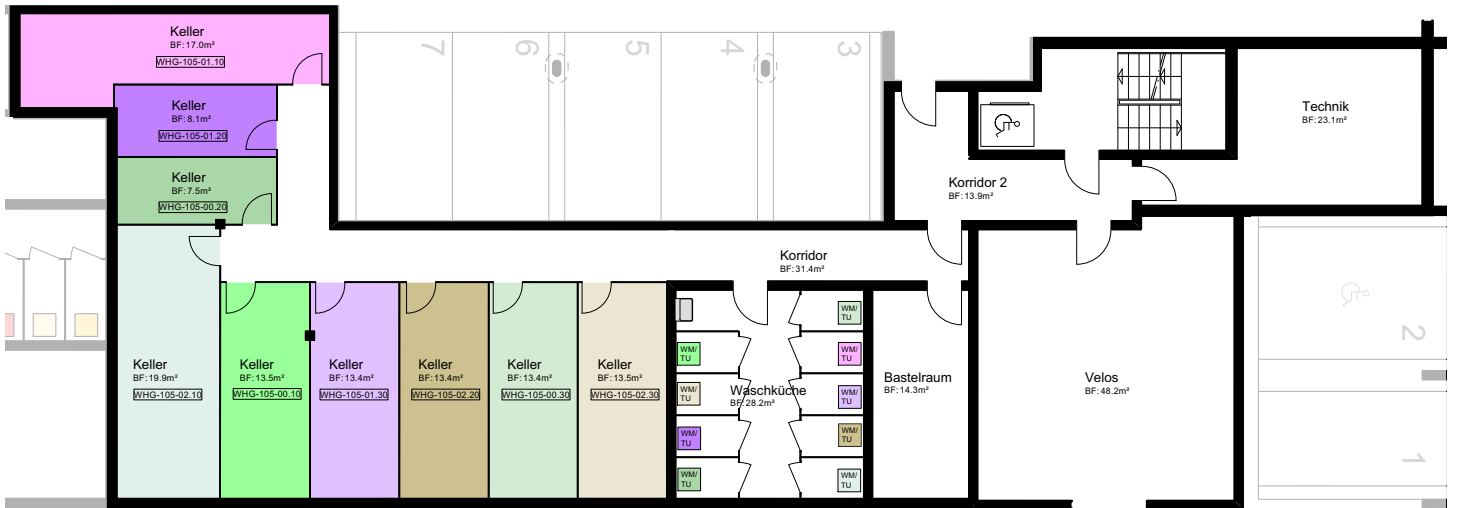


MASSTAB 1:100

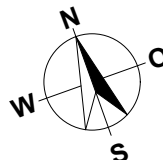


MEHRFAMILIENHAUS
ZILMATTSTRASSE 105
3255 RAPPERSWIL (BE)

HAUS 105
UNTERGESCHOSS



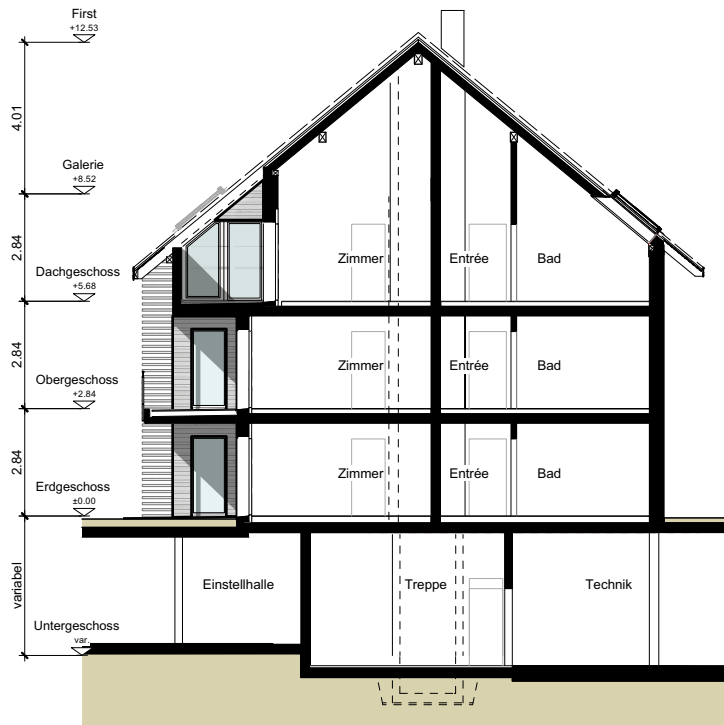
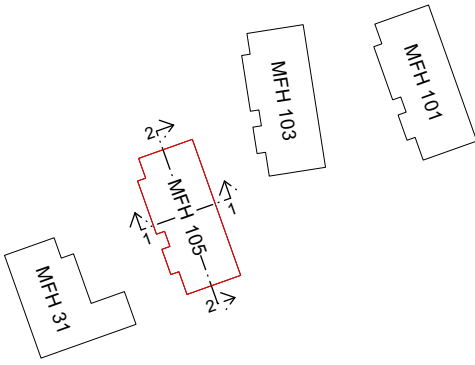
0 1 M 2 M 5 M 10 M



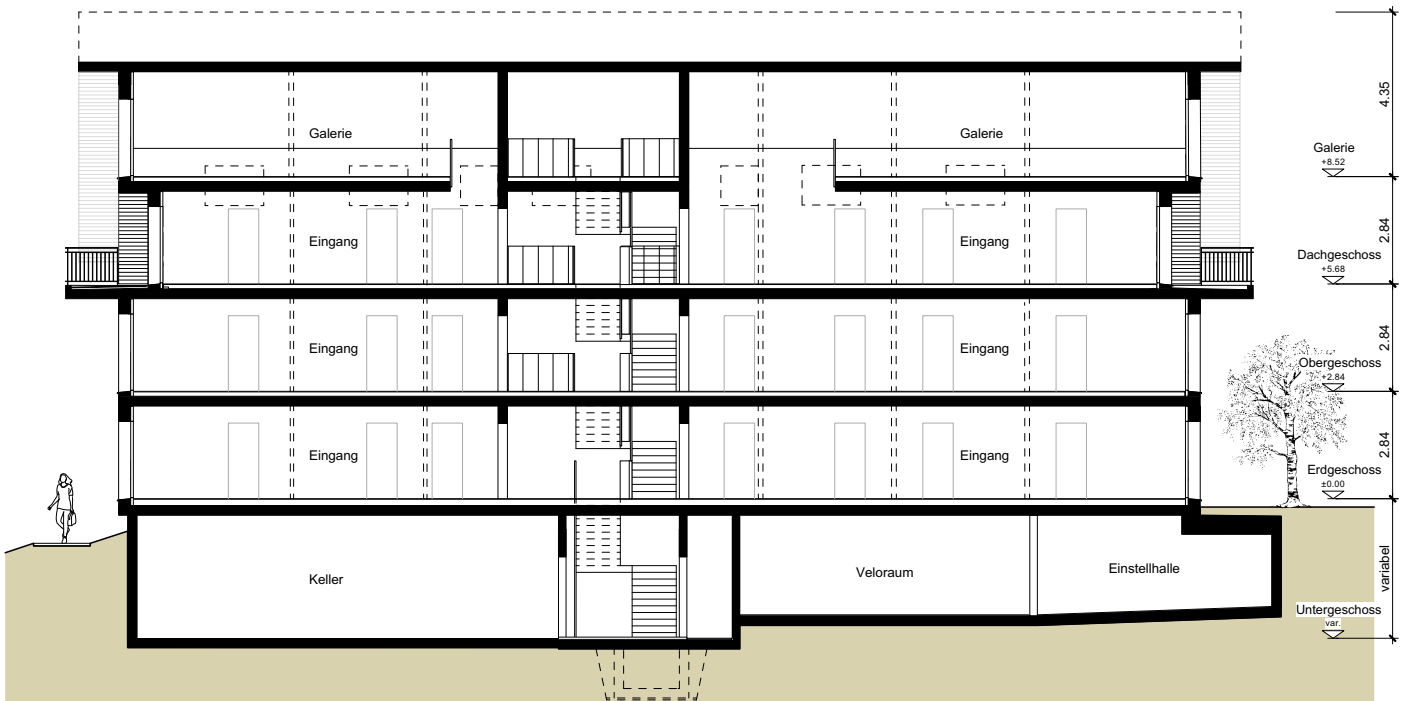
MASSTAB 1:200

MEHRFAMILIENHAUS
ZILMATTSTRASSE 105
3255 RAPPERSWIL (BE)

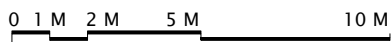
HAUS 105
SCHNITTE



SCHNITT 1-1



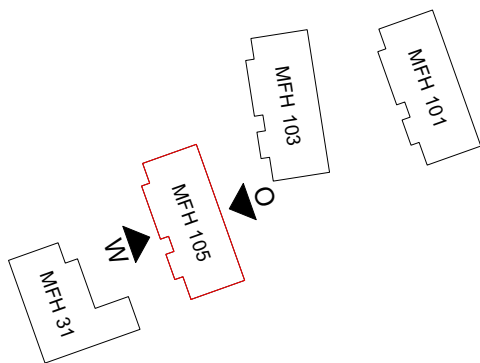
SCHNITT 2-2



MASSTAB 1:200

MEHRFAMILIENHAUS
ZILMATTSTRASSE 105
3255 RAPPERSWIL (BE)

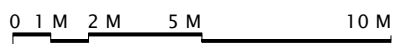
HAUS 105
FASSADEN



OSTEN



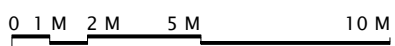
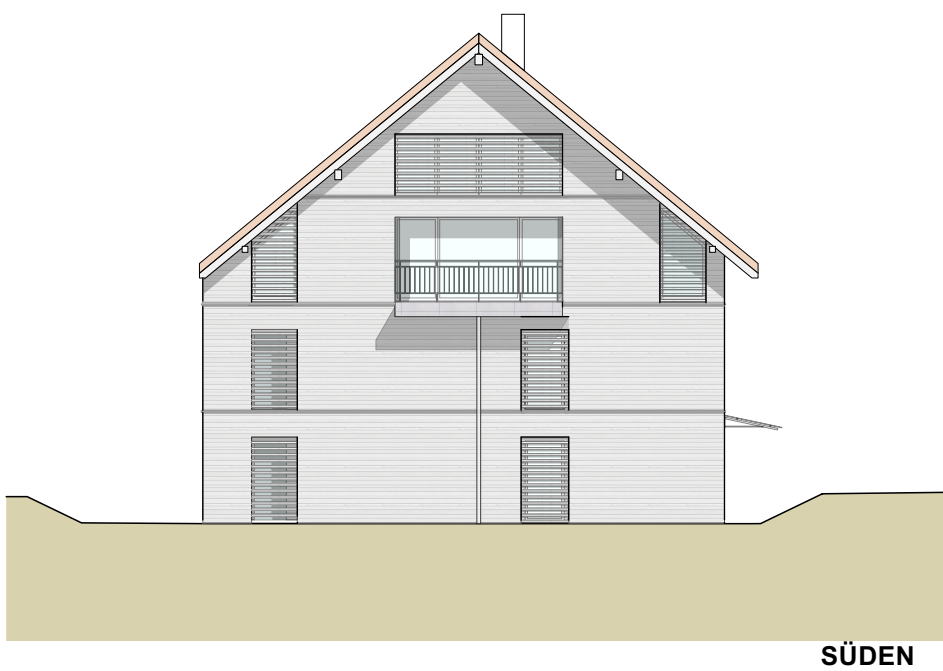
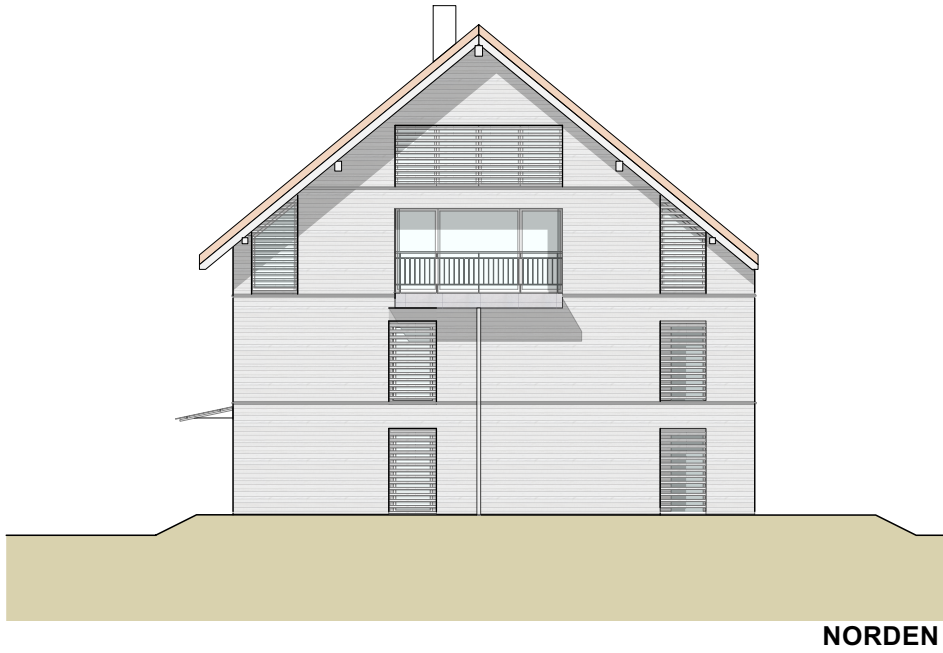
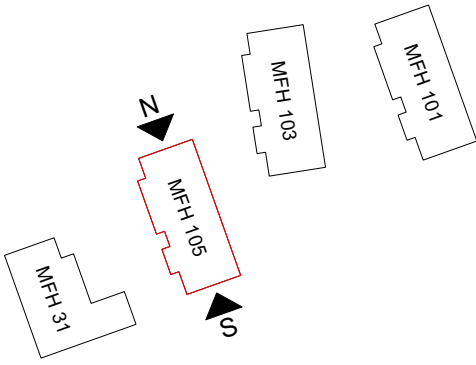
WESTEN



MASSTAB 1:200

MEHRFAMILIENHAUS
ZILMATTSTRASSE 105
3255 RAPPERSWIL (BE)

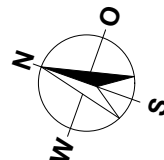
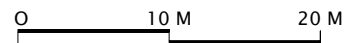
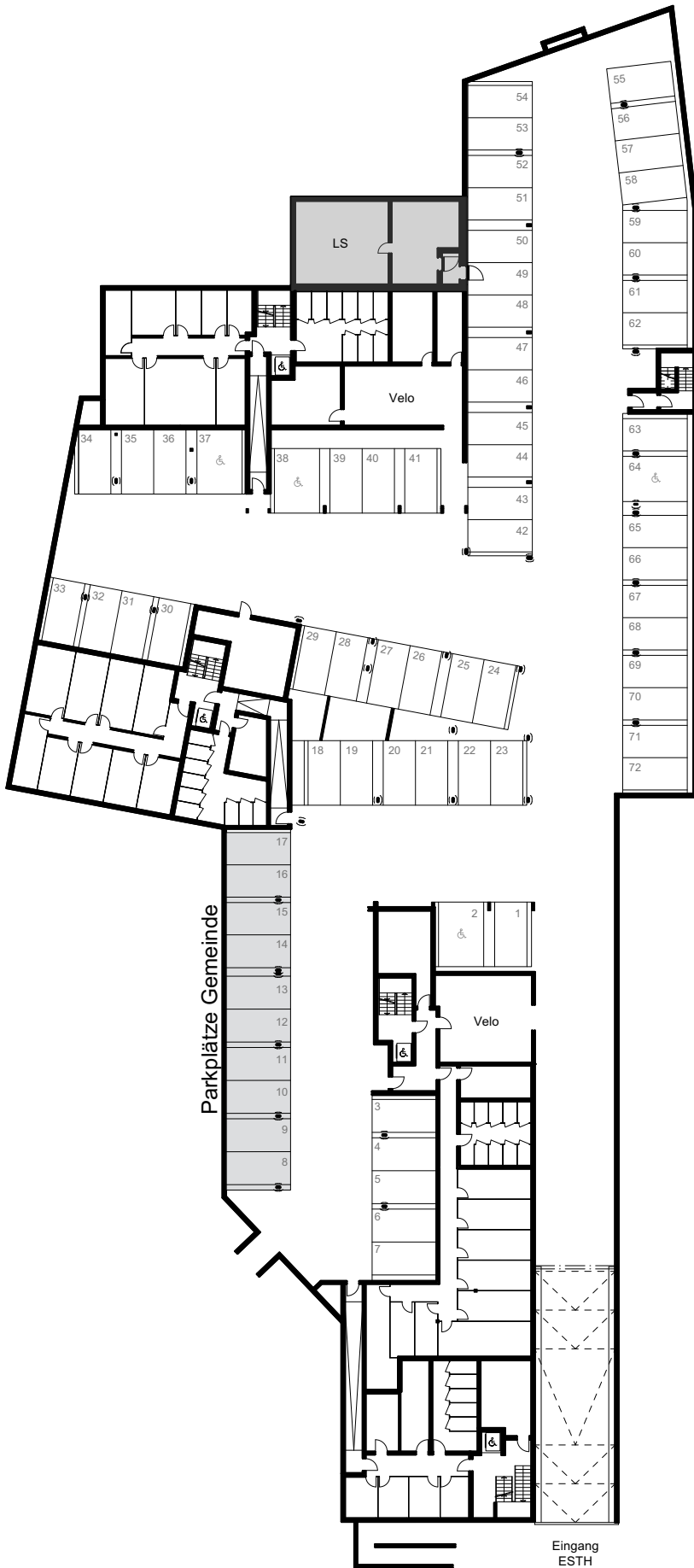
HAUS 105
FASSADEN



MASSTAB 1:200

MEHRFAMILIENHÄUSER
HAUPTSTRASSE 31
ZILMATTSTRASSE 101, 103 UND 105
3255 RAPPERSWIL (BE)

SITUATION / UNTERGESCHOSS / ESTH



MASSSTAB 1:500