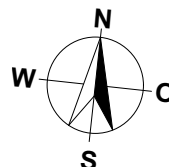
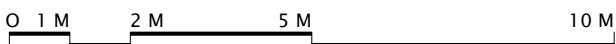
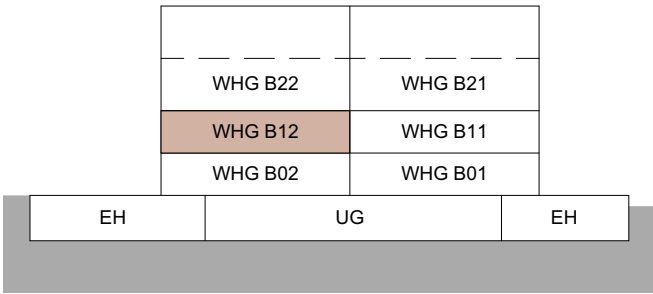


MEHRFAMILIENHAUS B
TALACHER
3068 UTZIGEN

3.5 ZIMMER

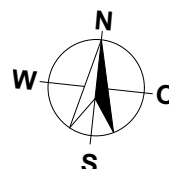
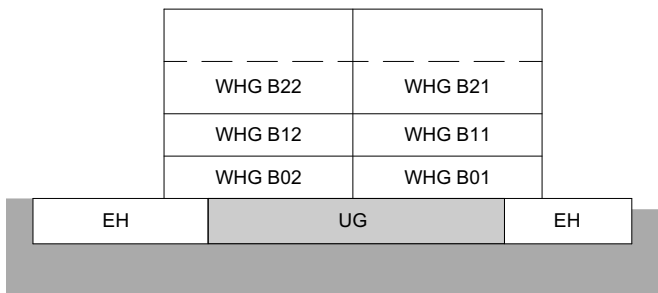
WOHNUNG: WHG B12 OG
 KELLER: 7.5 m²
 LOGGIEN: 14.5 m²
 NETTOWOHNFLÄCHE: 86.5 m²



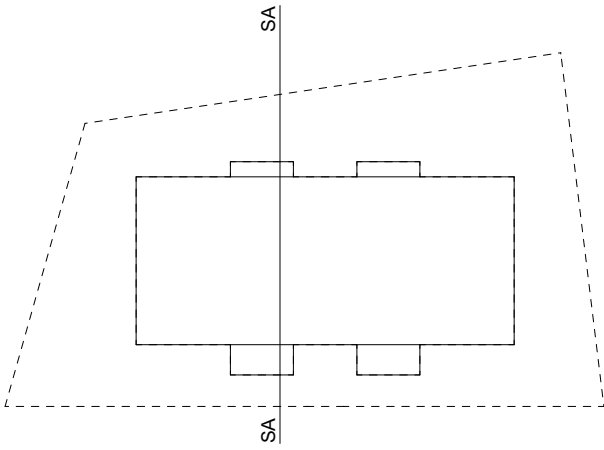
MASSTAB 1:100

MEHRFAMILIENHAUS B
TALACHER
3068 UTZIGEN

UNTERGESCHOSS

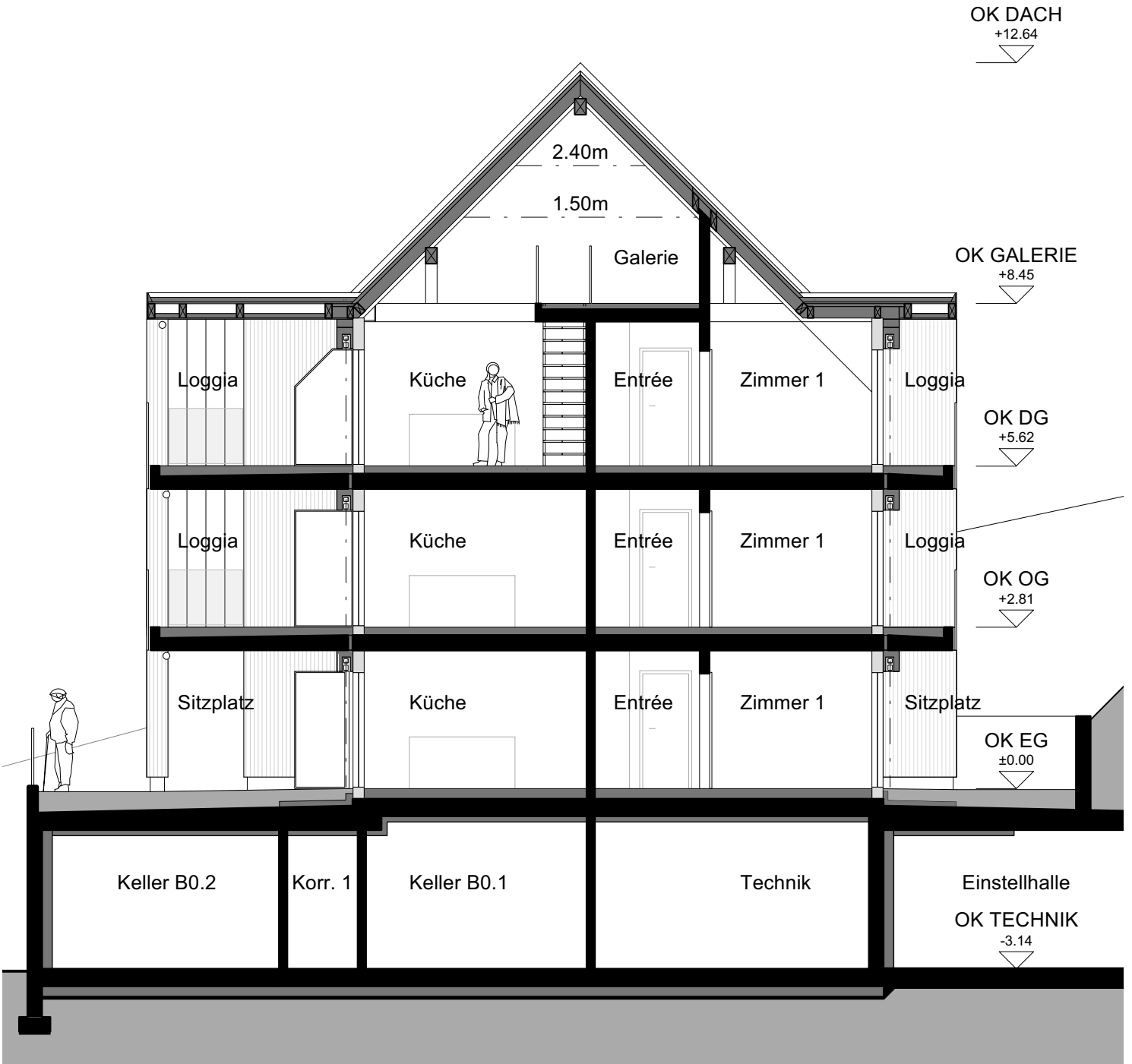


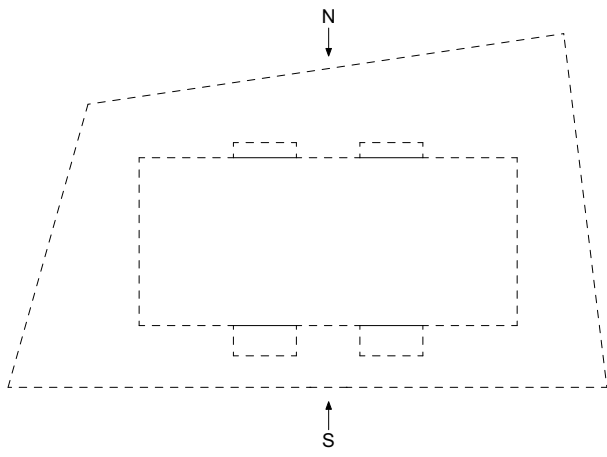
MASSTAB 1:100



MEHRFAMILIENHAUS B
TALACHER
3068 UTZIGEN

SCHNITT A-A





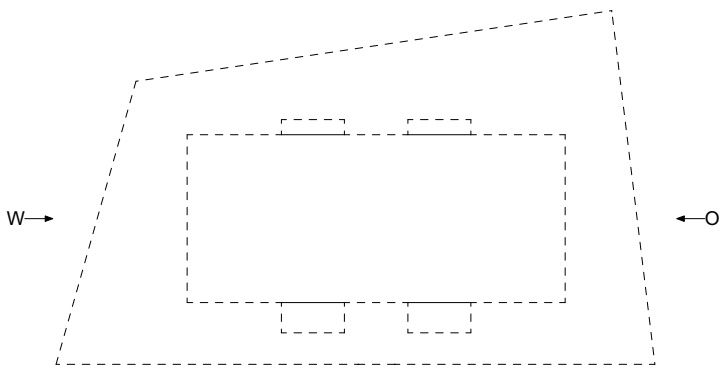
MEHRFAMILIENHAUS B
TALACHER
3068 UTZIGEN

FASSADEN NORD/SÜD

NORDFASSADE



SÜDFASSADE



MEHRFAMILIENHAUS B
TALACHER
3068 UTZIGEN

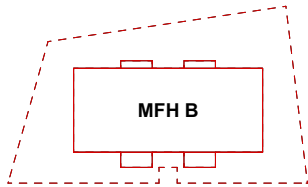
FASSADEN OST/WEST



OSTFASSADE



WESTFASSADE



MEHRFAMILIENHAUS B
TALACHER
3068 UTZIGEN

EINSTELLHALLE/KELLER

