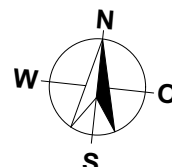
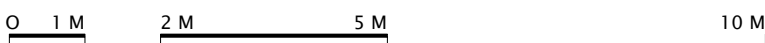
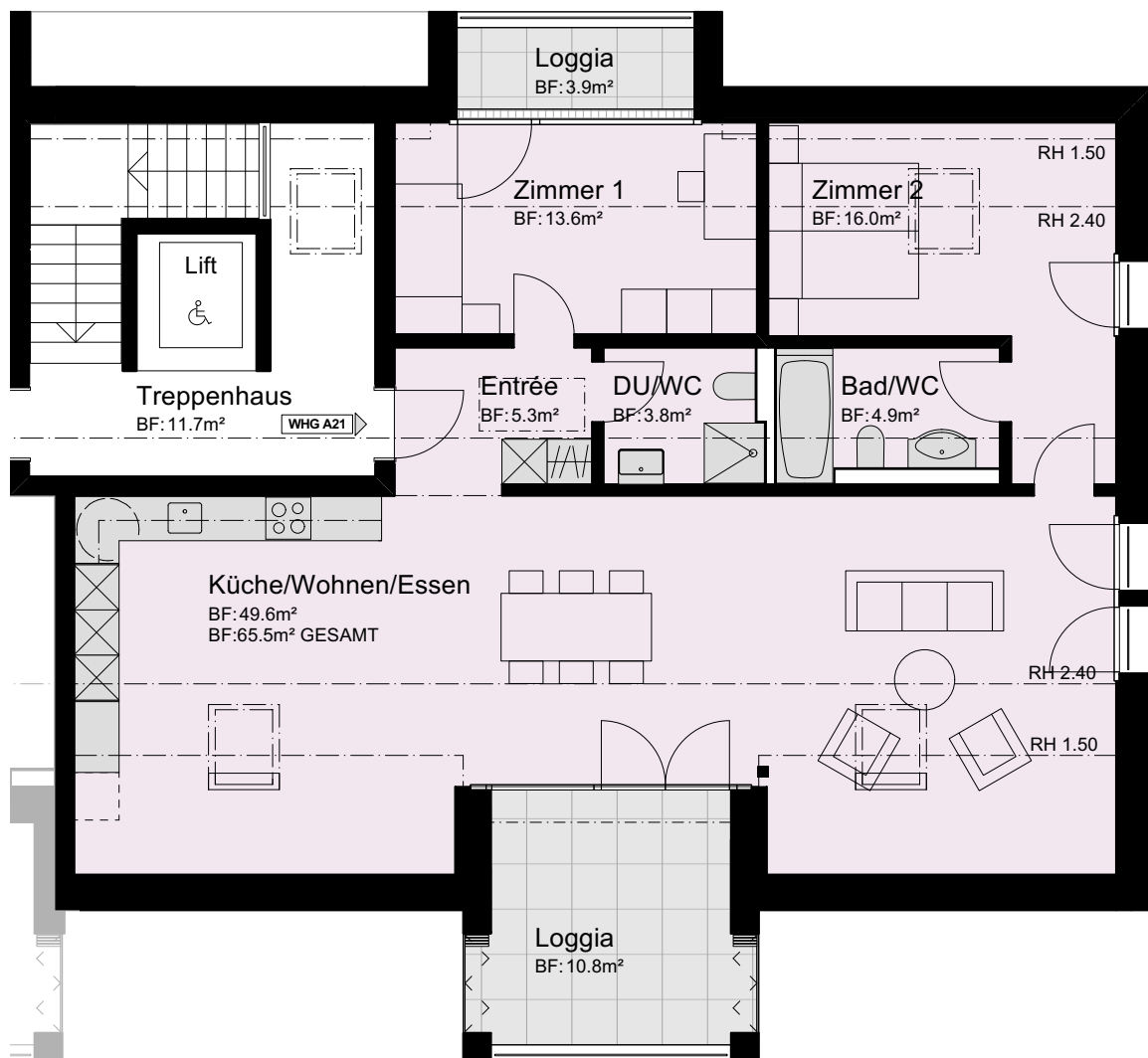


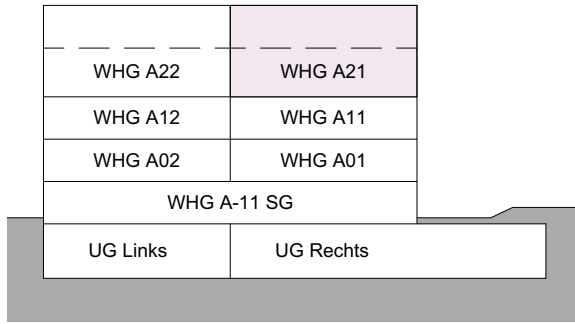
**MEHRFAMILIENHAUS A
TALACHER
3068 UTZIGEN**

3.5 ZIMMER MIT ESTRICH

WOHNUNG: WHG A21 DG
 KELLER: 9.5 m²
 LOGGIEN: 14.5 m²
 GESAMTE WOHNFLÄCHE: 109.0 m²



MASSTAB 1:100

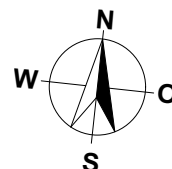
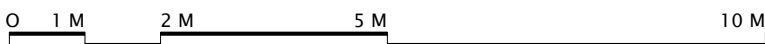


MEHRFAMILIENHAUS A
TALACHER
3068 UTZIGEN

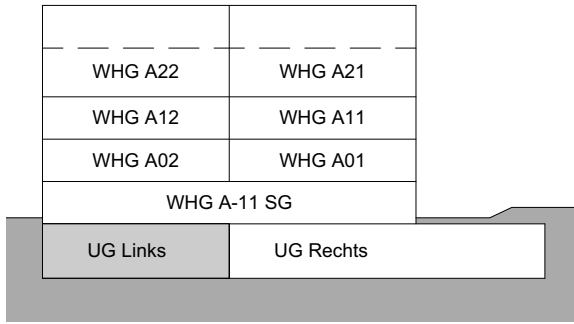
3.5 ZIMMER MIT ESTRICH

WOHNUNG:
ESTRICH:

WHG A21 Estrich
13.5 m²

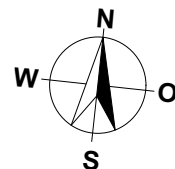
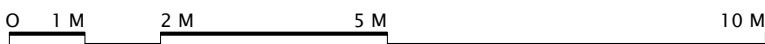
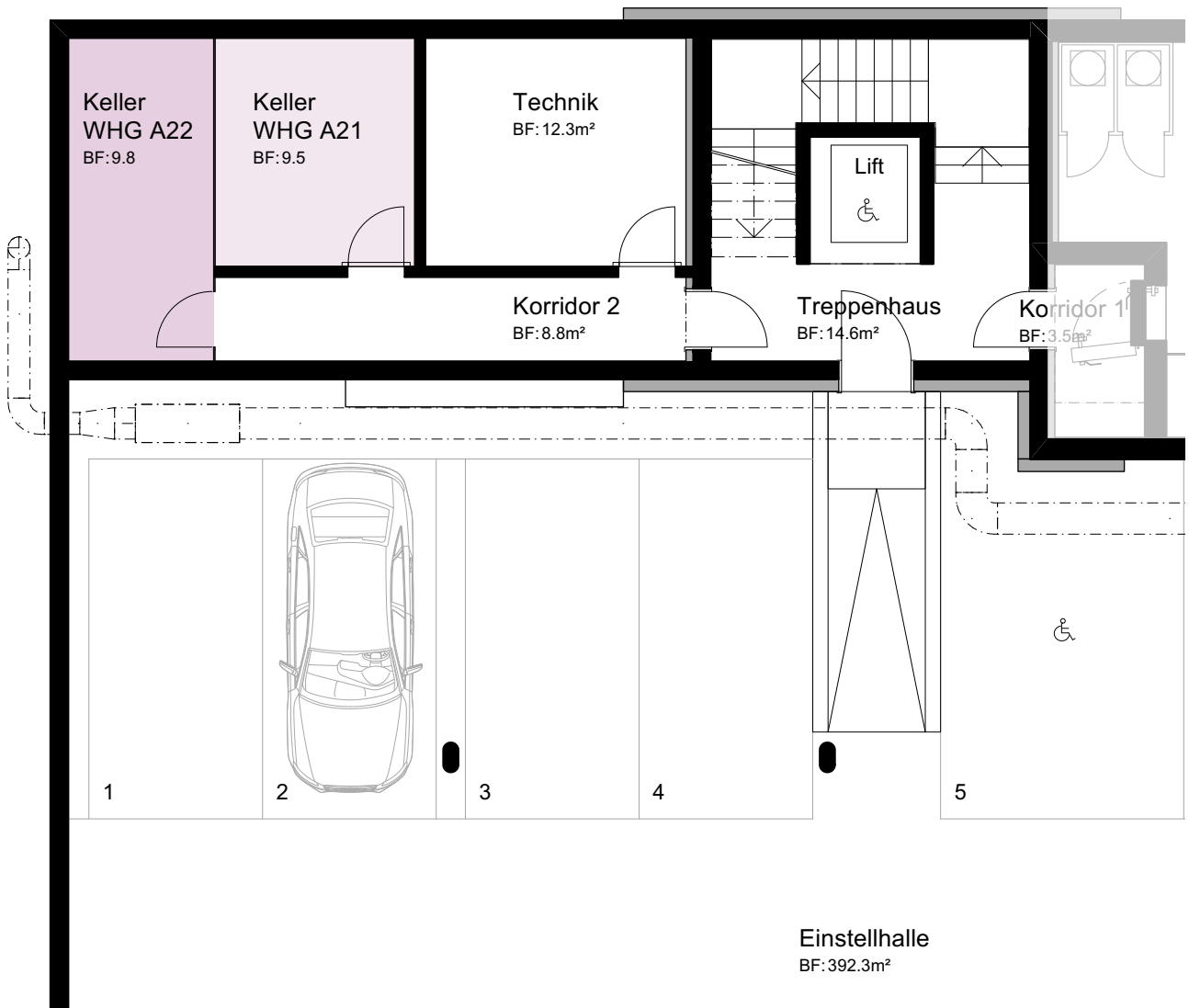


MASSTAB 1:100

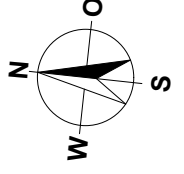
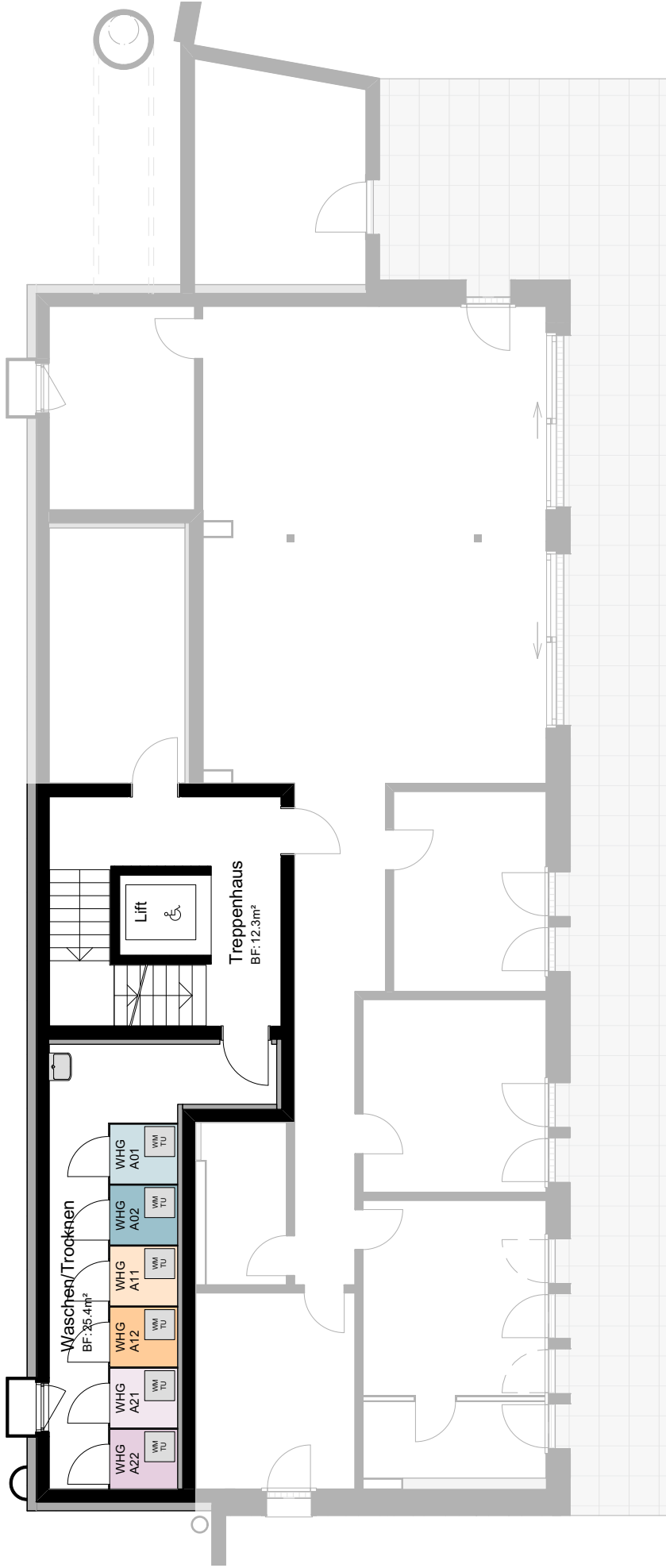


MEHRFAMILIENHAUS A
TALACHER
3068 UTZIGEN

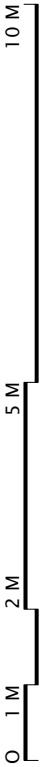
UNTERGESCHOSS LINKS

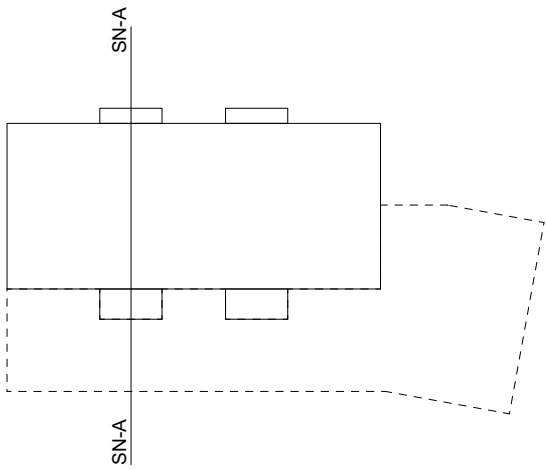


MASSTAB 1:100



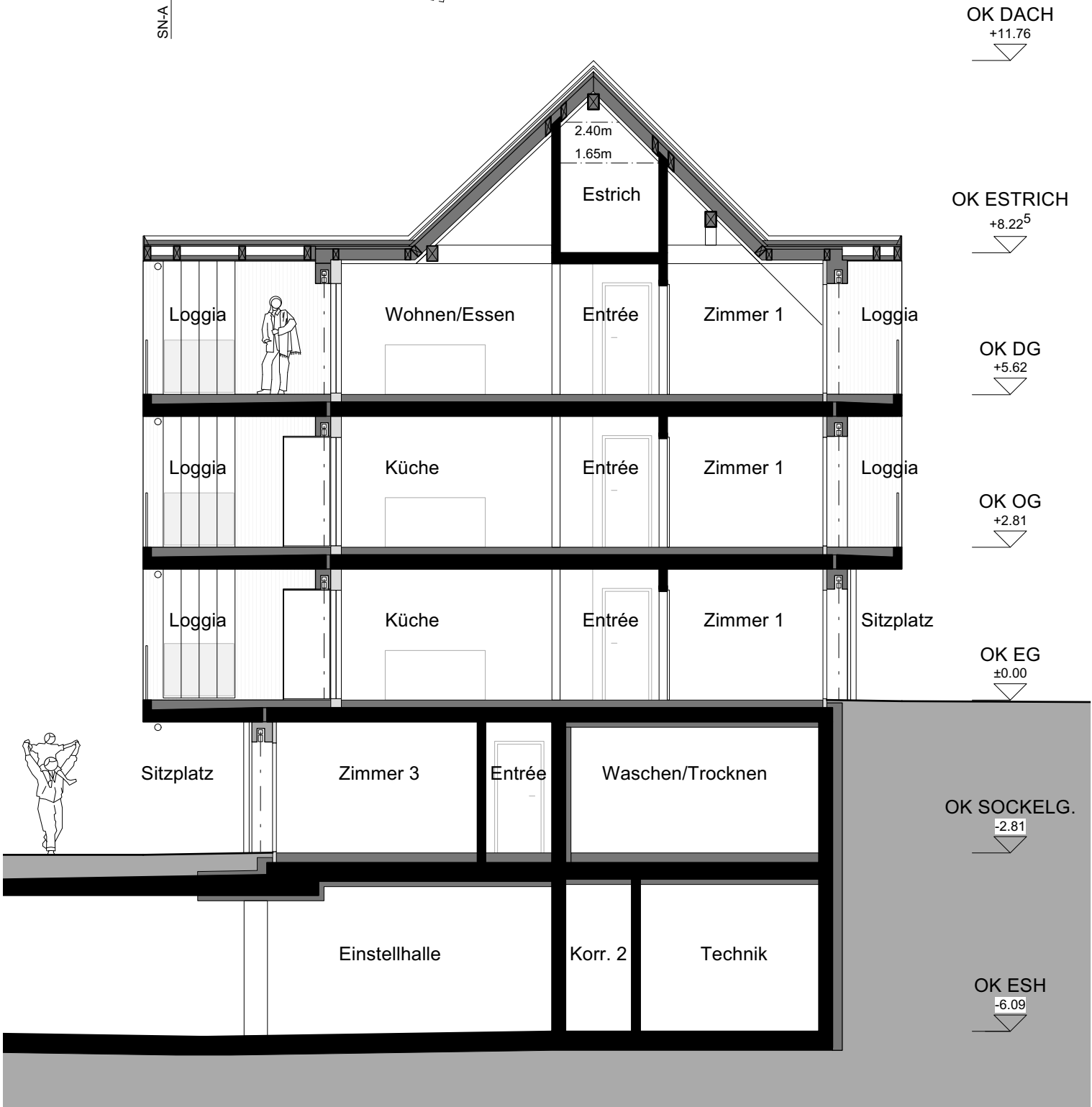
MASSTAB 1:120





MEHRFAMILIENHAUS A
TALACHER
3068 UTZIGEN

SCHNITT A-A



OK DACH
+11.76

OK ESTRICH
+8.22⁵

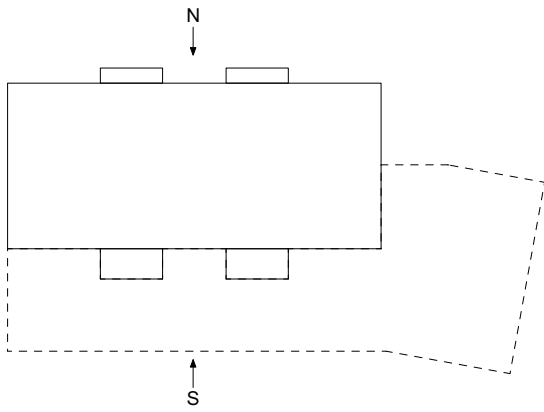
OK DG
+5.62

OK OG
+2.81

OK EG
±0.00

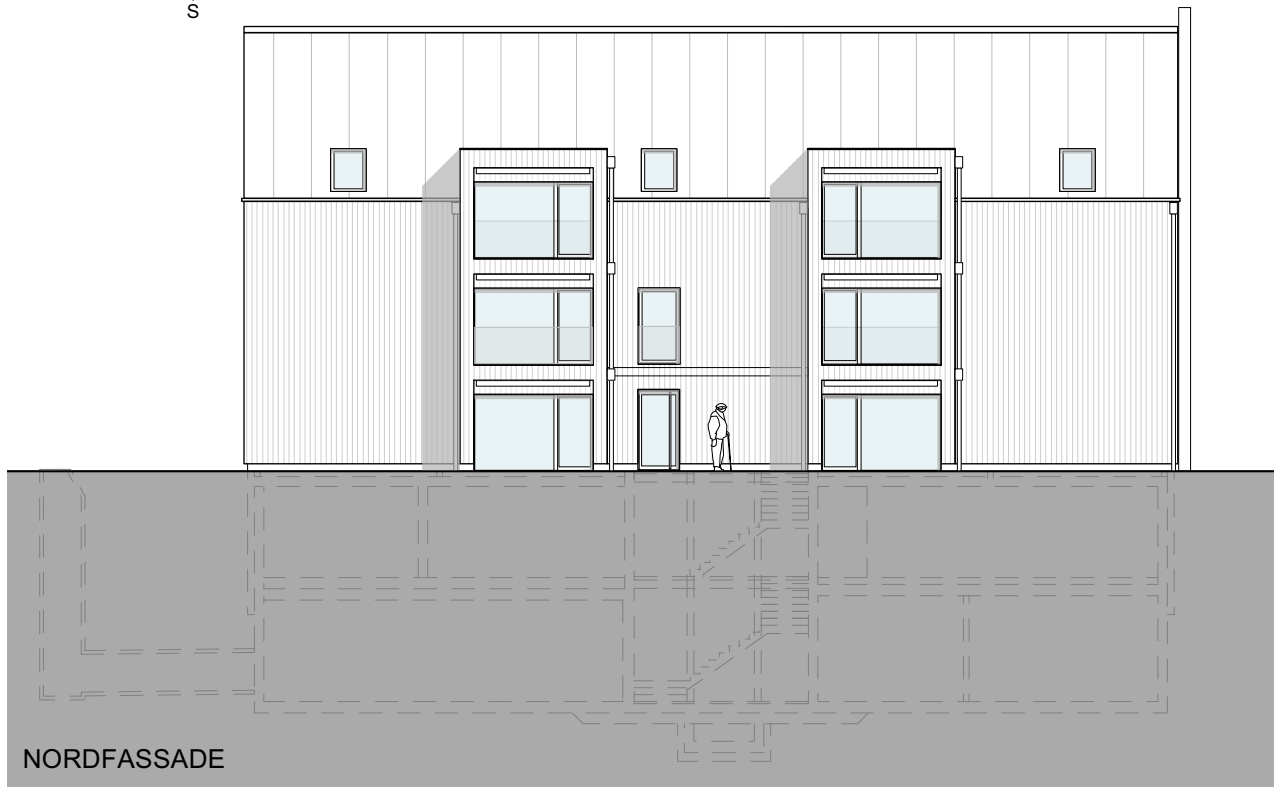
OK SOCKELG.
-2.81

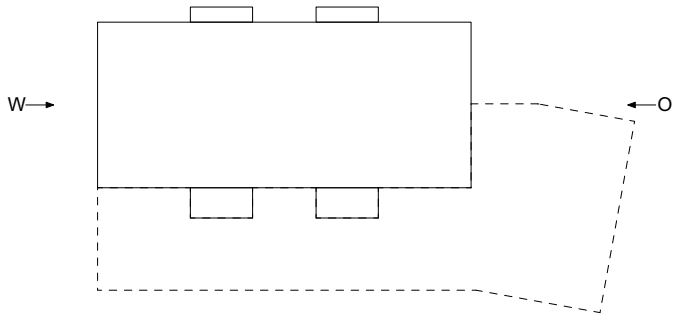
OK ESH
-6.09



MEHRFAMILIENHAUS A
TALACHER
3068 UTZIGEN

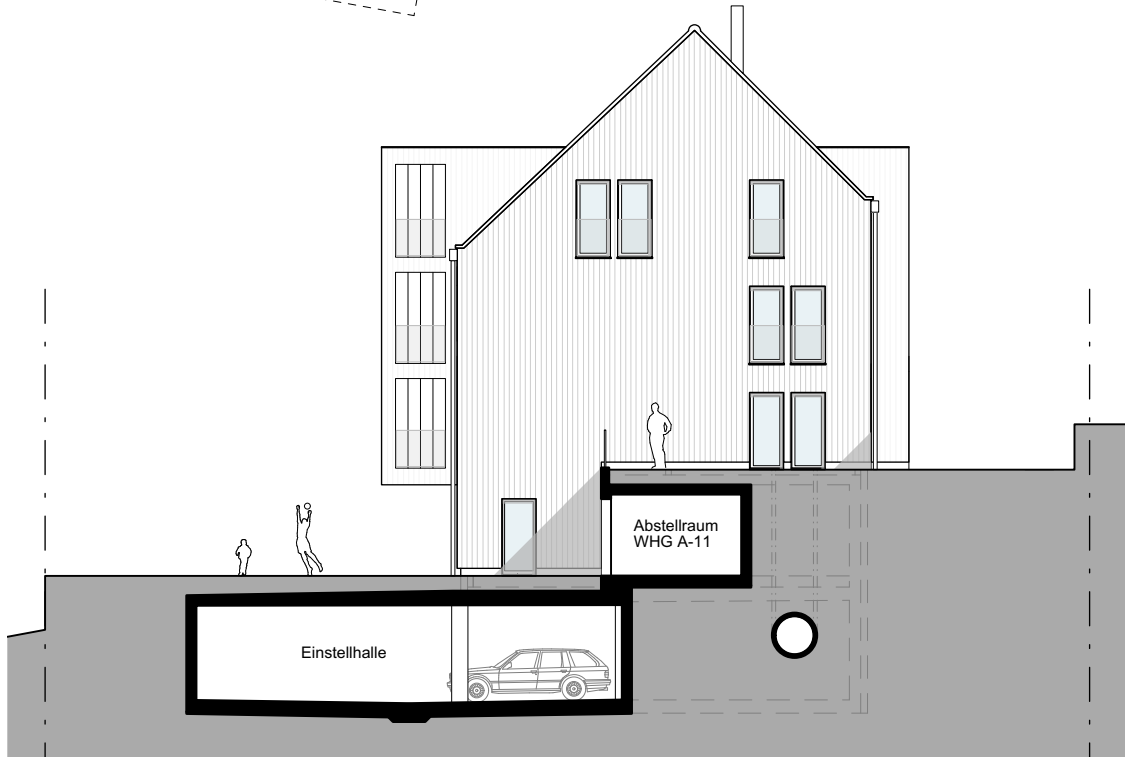
FASSADEN NORD/SÜD



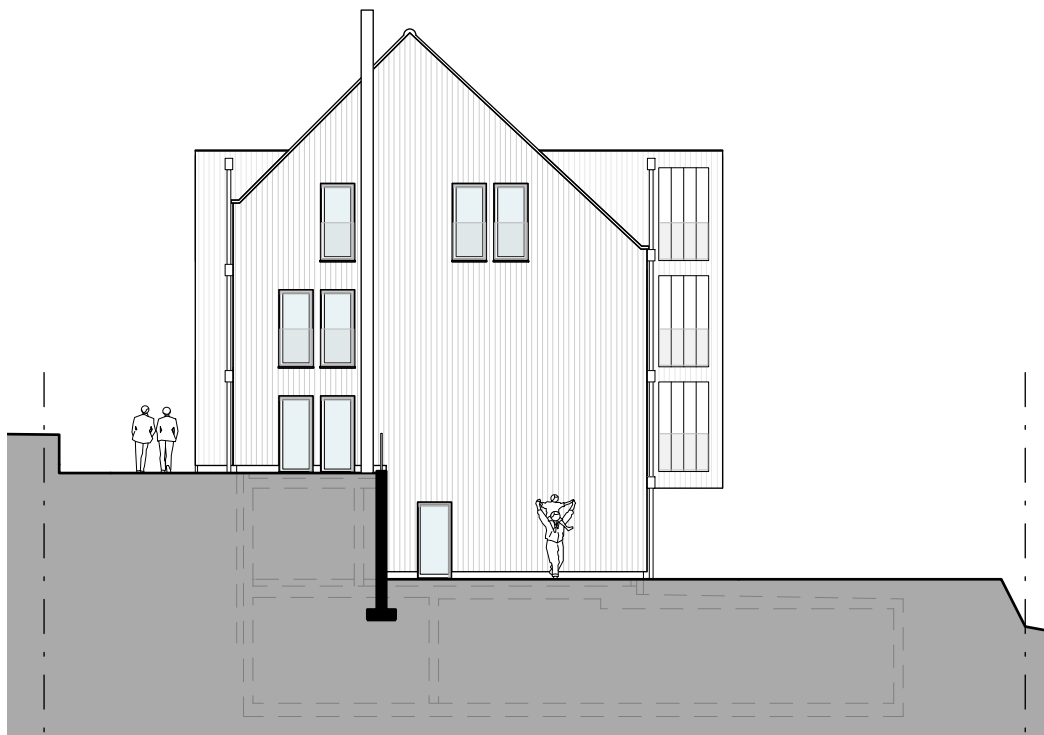


MEHRFAMILIENHAUS A
TALACHER
3068 UTZIGEN

FASSADEN OST/WEST



OSTFASSADE



WESTFASSADE

MEHRFAMILIENHAUS A
TALACHER
3068 UTZIGEN

EINSTELLHALLE/KELLER

