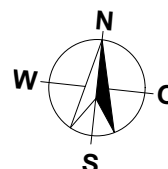
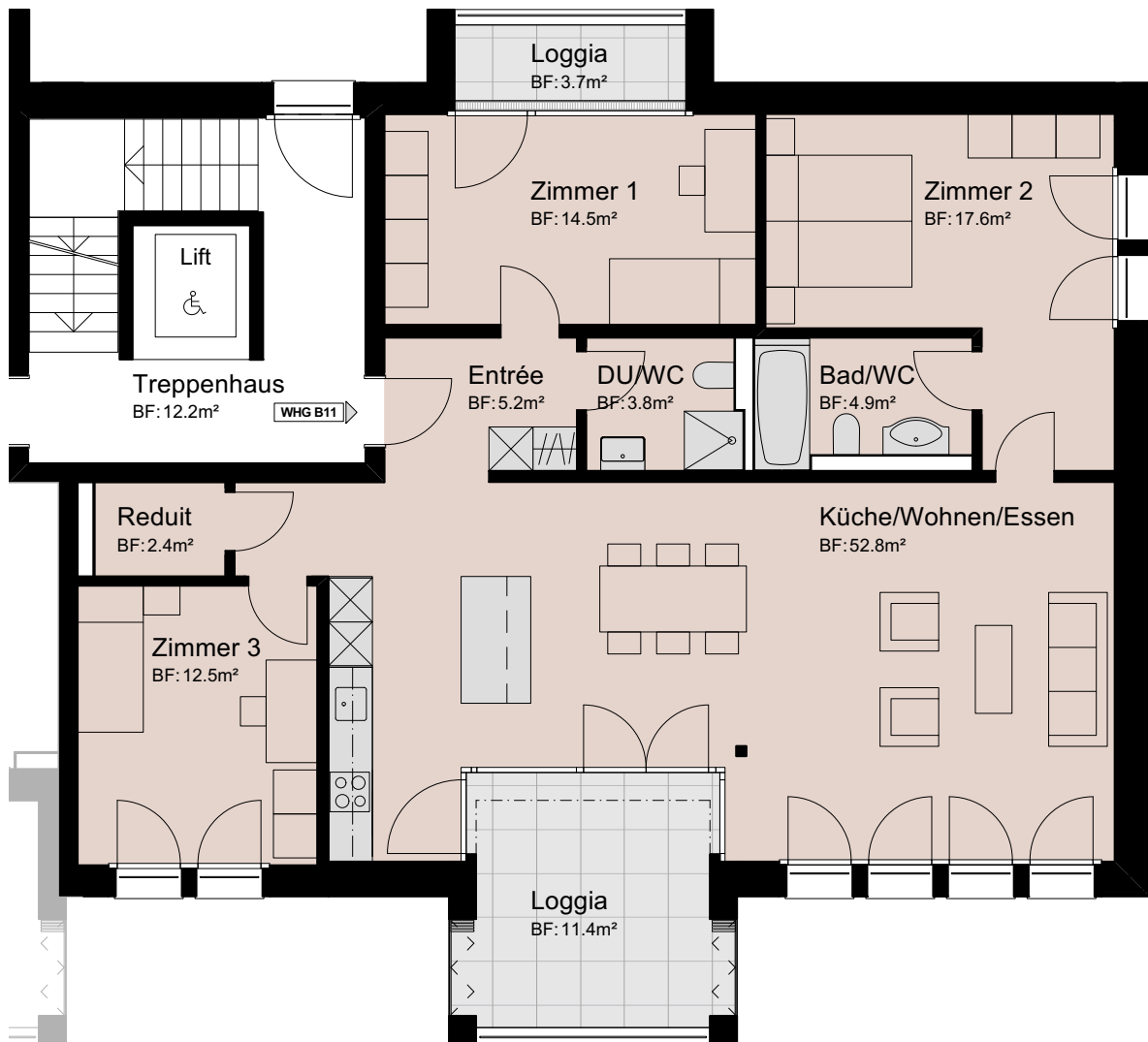
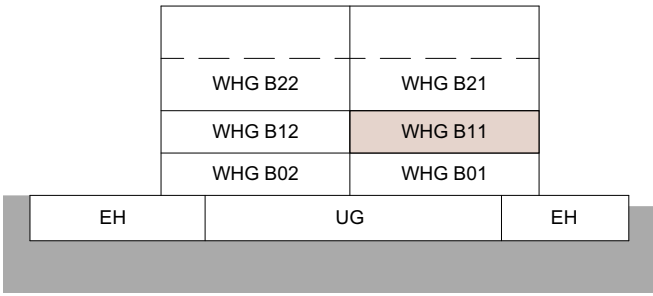


MEHRFAMILIENHAUS B
TALACHER
3068 UTZIGEN

4.5 ZIMMER

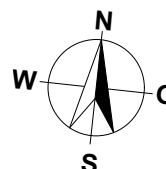
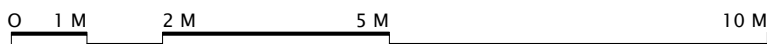
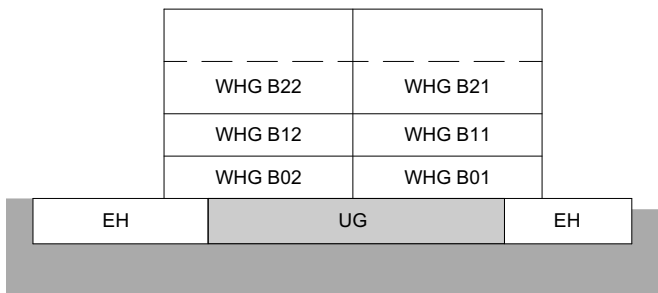
WOHNUNG:	WHG B11 OG
KELLER:	7.0 m ²
LOGGIEN:	14.5 m ²
NETTOWOHNFLÄCHE:	113.5 m ²



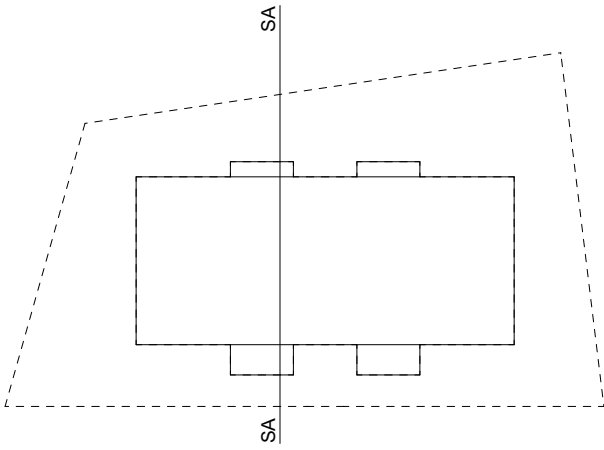
MASSTAB 1:100

MEHRFAMILIENHAUS B
TALACHER
3068 UTZIGEN

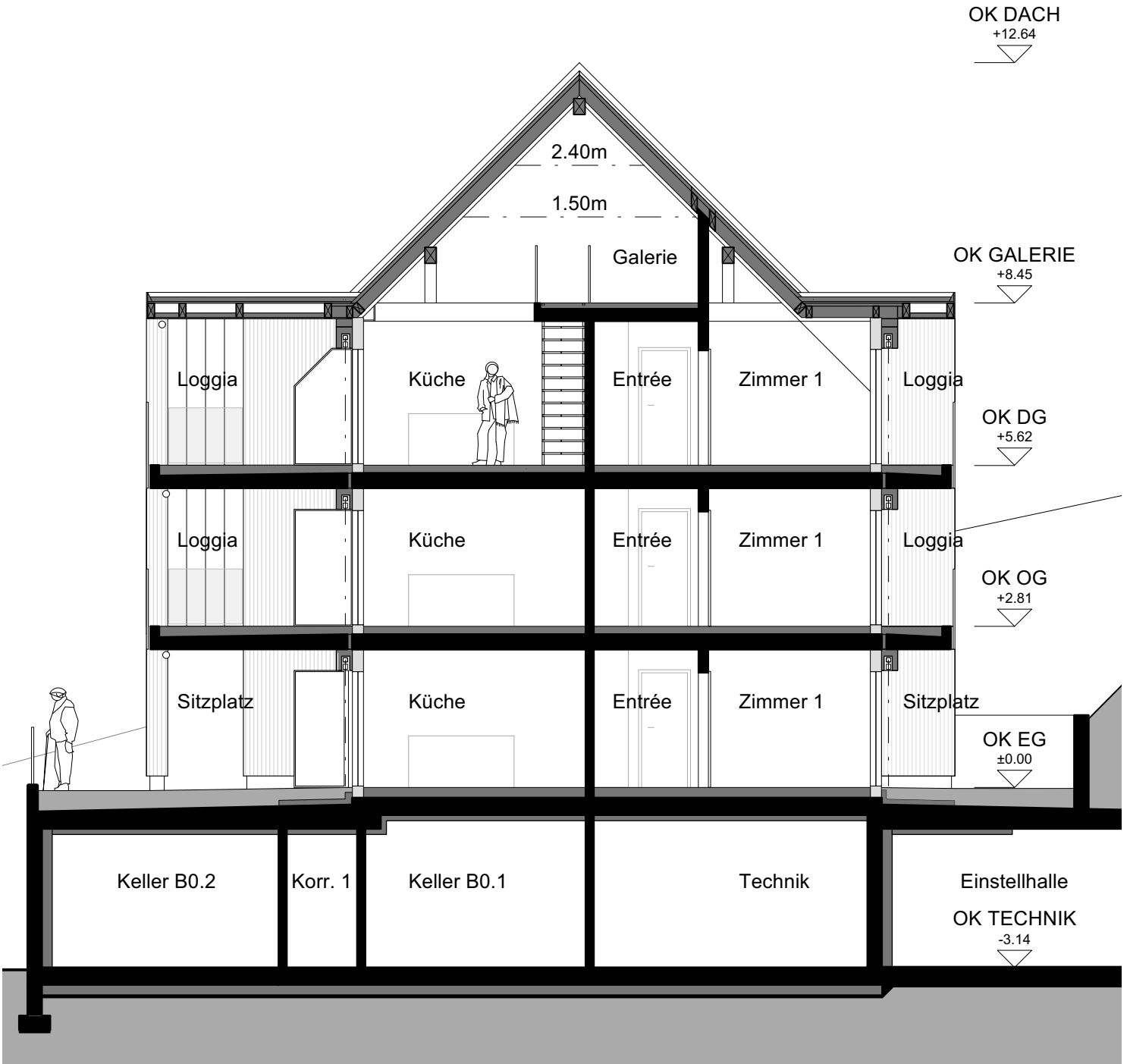
UNTERGESCHOSS

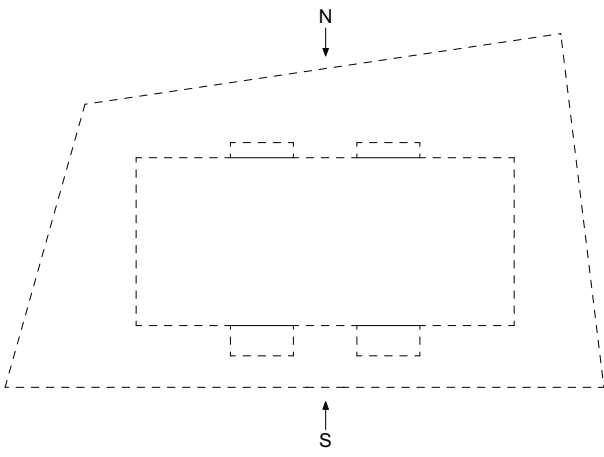


MASSTAB 1:100



MEHRFAMILIENHAUS B
 TALACHER
 3068 UTZIGEN
 SCHNITT A-A





MEHRFAMILIENHAUS B
TALACHER
3068 UTZIGEN

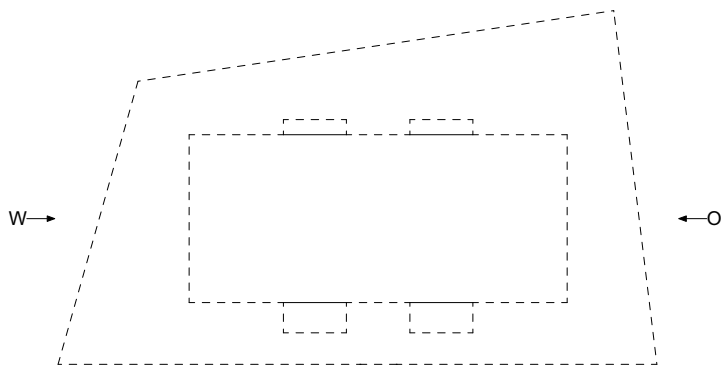
FASSADEN NORD/SÜD

NORDFASSADE



SÜDFASSADE





MEHRFAMILIENHAUS B
TALACHER
3068 UTZIGEN

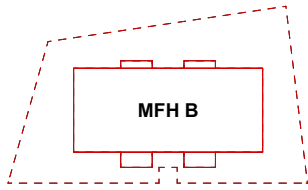
FASSADEN OST/WEST



OSTFASSADE



WESTFASSADE



MEHRFAMILIENHAUS B
TALACHER
3068 UTZIGEN

EINSTELLHALLE/KELLER

