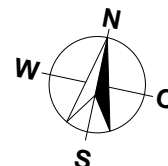
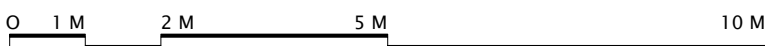
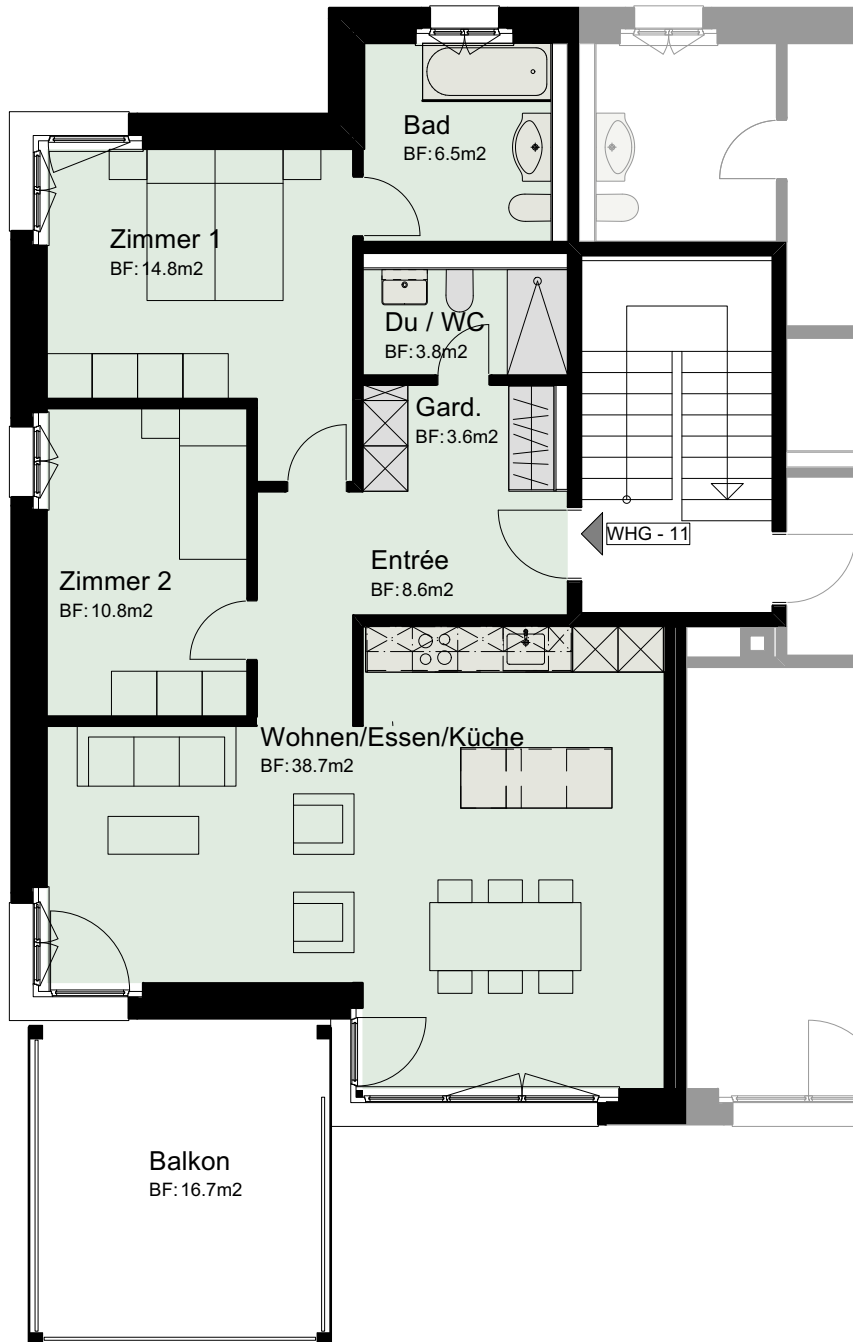


MEHRFAMILIENHAUS  
 BAHNHOFSTRASSE 4, 6  
 3292 BUSSWIL  
 3.5 ZIMMER

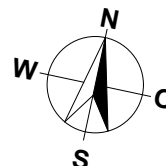
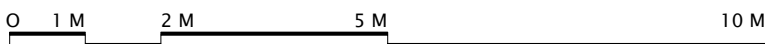
WOHNUNG: WHG 11, 1.OG  
 KELLER: 7.0 m<sup>2</sup>  
 BALKON: 16.5 m<sup>2</sup>  
 NETTOWOHNFLÄCHE: 87.0 m<sup>2</sup>



MASSTAB 1:100

MEHRFAMILIENHAUS  
BAHNHOFSTRASSE 4, 6  
3292 BUSSWIL

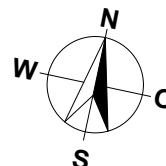
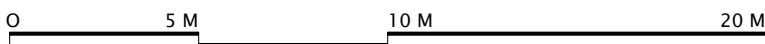
UNTERGESCHOSS LINKS



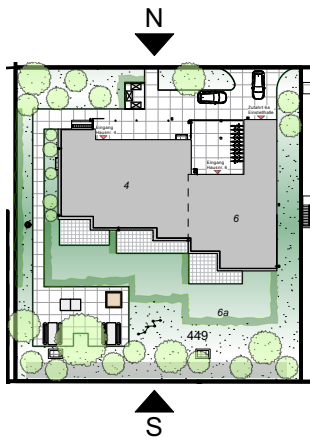
MASSTAB 1:100

MEHRFAMILIENHAUS  
 BAHNHOFSTRASSE 4, 6  
 3292 BUSSWIL

EINSTELLHALLE/KELLER



MASSTAB 1:200



MEHRFAMILIENHAUS  
BAHNHOFSTRASSE 4, 6  
3292 BUSSWIL

FASSADEN



SÜDEN

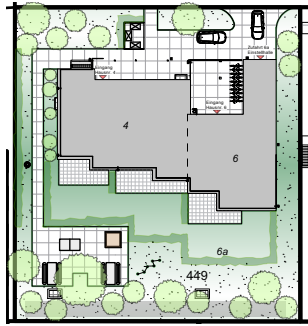


NORDEN

0 1 M 2 M 5 M 10 M

MASSTAB 1:200

W



MEHRFAMILIENHAUS  
BAHNHOFSTRASSE 4, 6  
3292 BUSSWIL

FASSADEN



WESTEN



OSTEN

0 1 M 2 M 5 M 10 M

MASSTAB 1:200