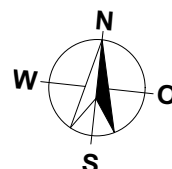
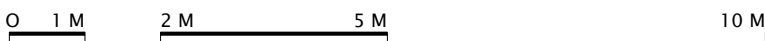


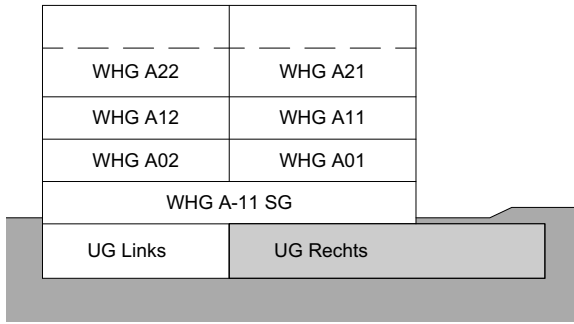
**MEHRFAMILIENHAUS A
TALACHER
3068 UTZIGEN**

3.5 ZIMMER

WOHNUNG:	WHG A02 EG
KELLER:	10.5 m ²
LOGGIA / SITZPLATZ:	15.0 m ²
NETTOWOHNFLÄCHE:	86.0 m ²

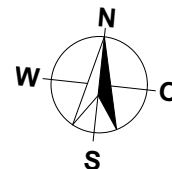
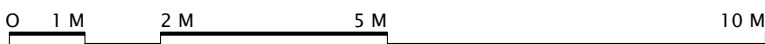
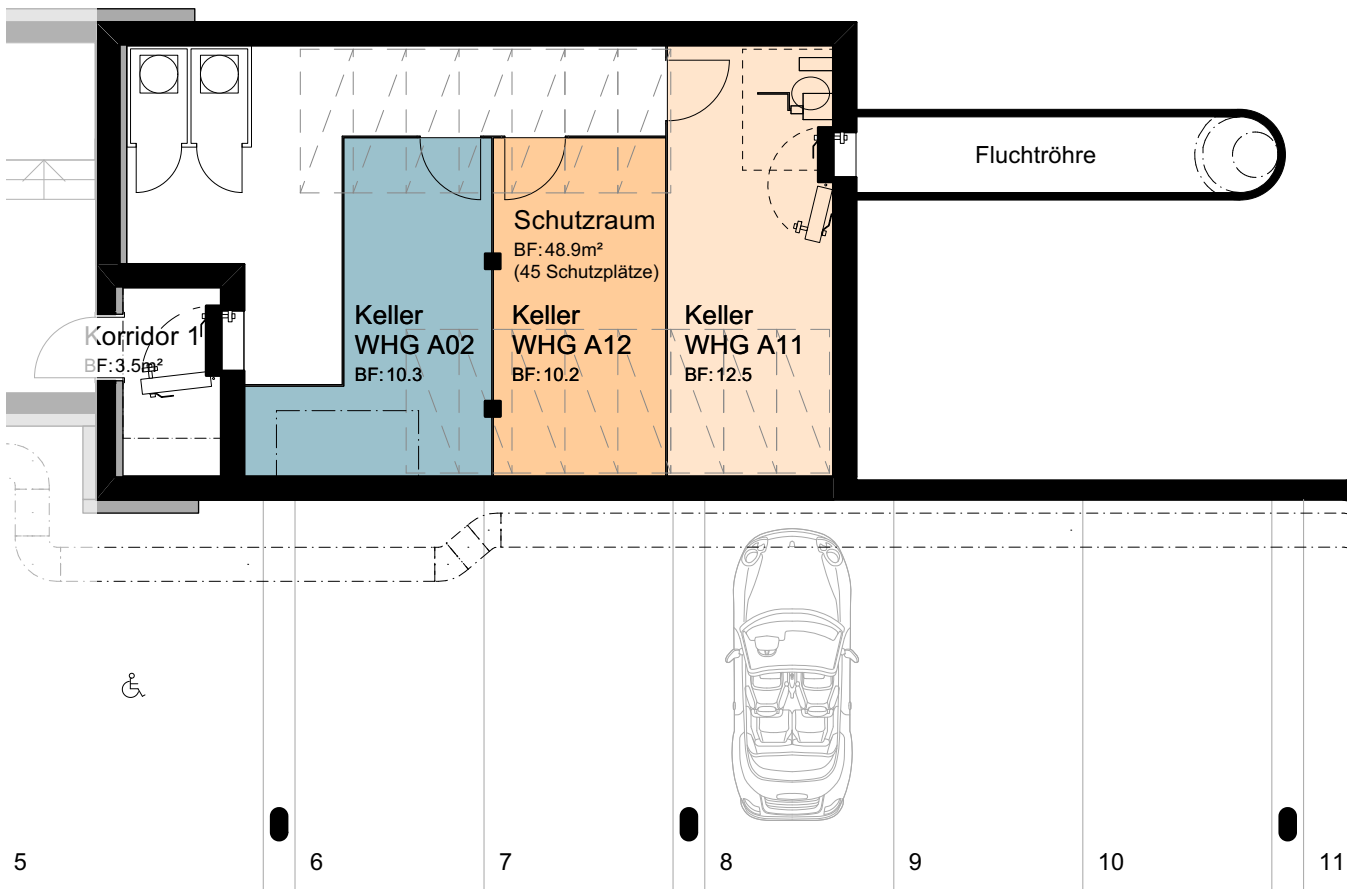


MASSTAB 1:100

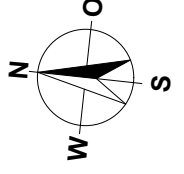
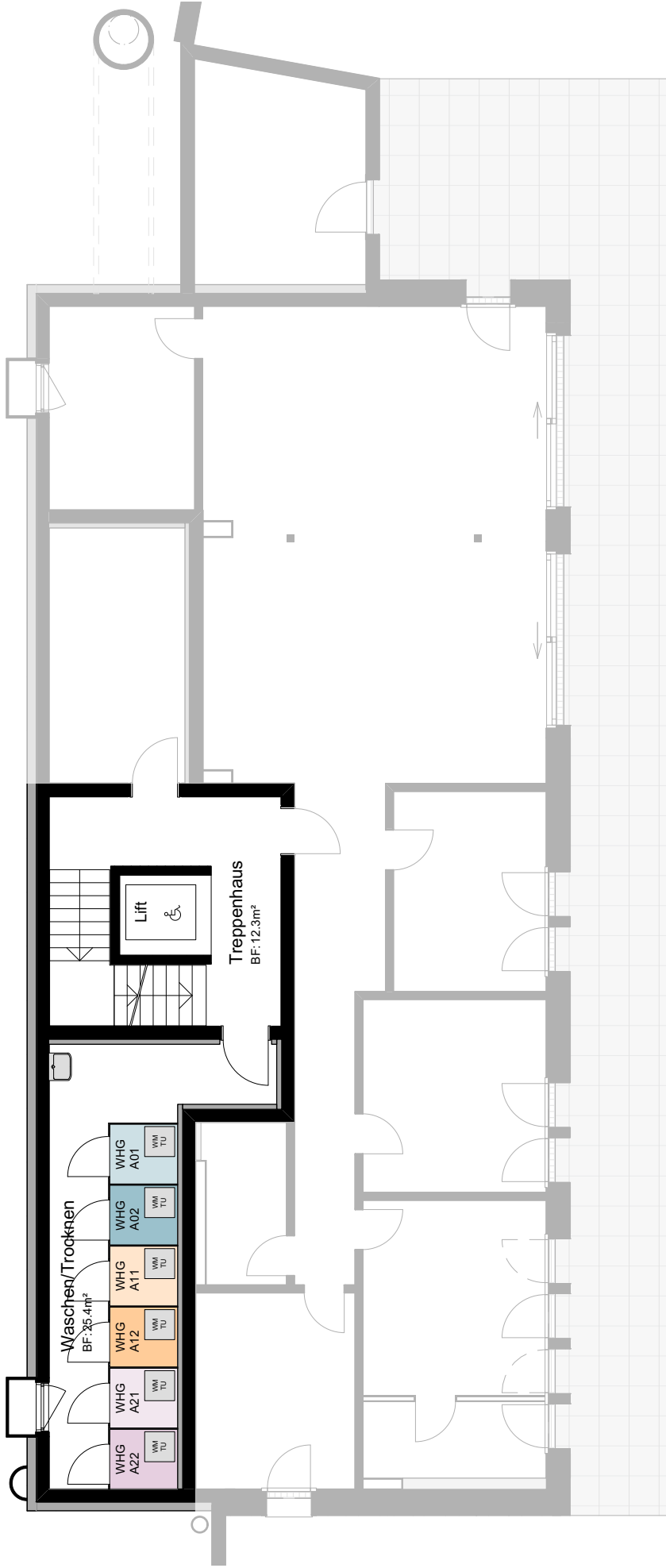


MEHRFAMILIENHAUS A
TALACHER
3068 UTZIGEN

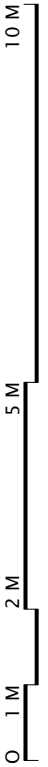
UNTERGESCHOSS RECHTS

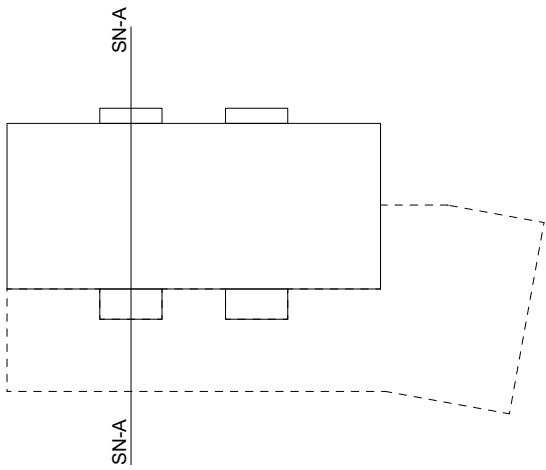


MASSTAB 1:100



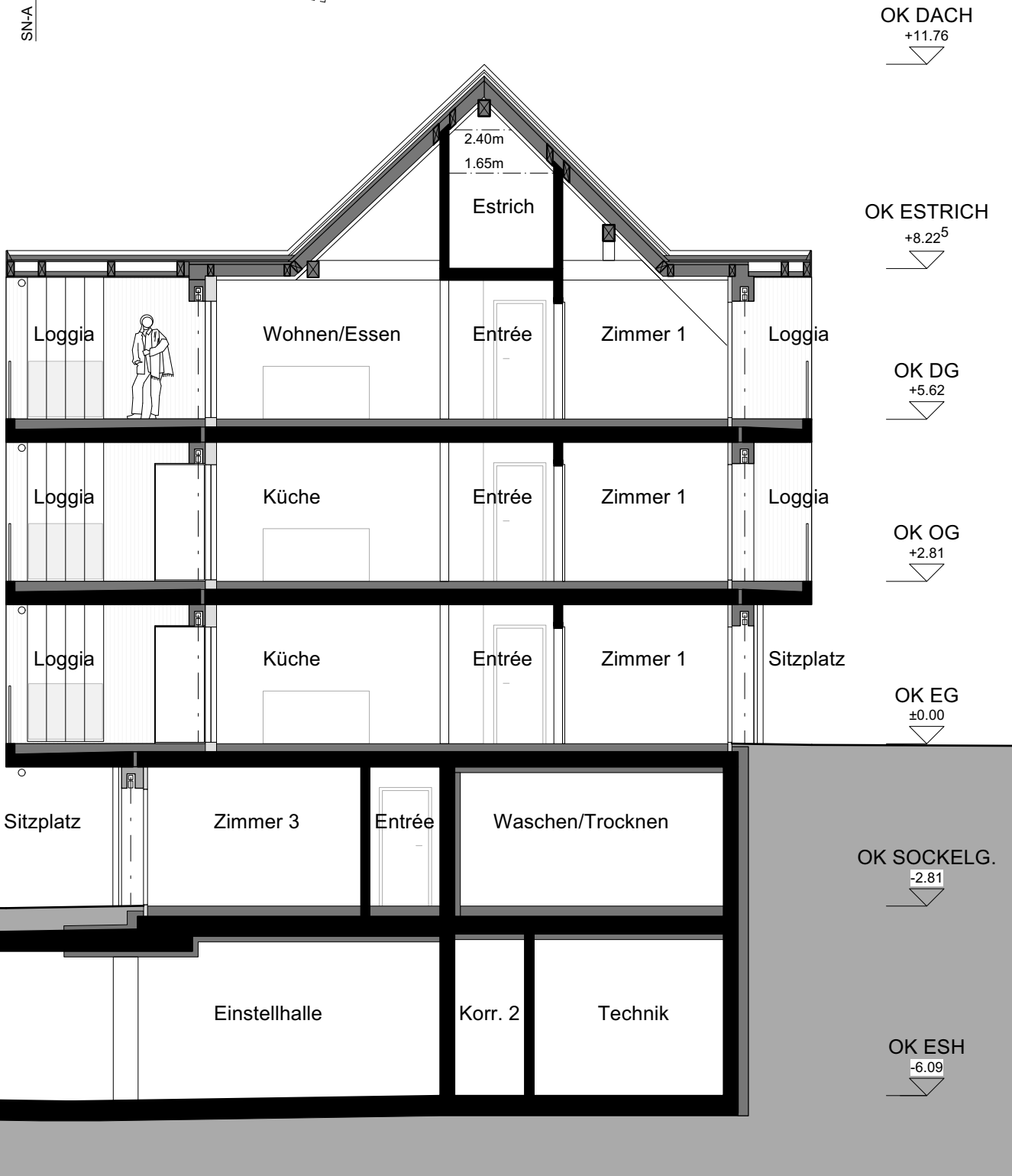
MASSTAB 1:120

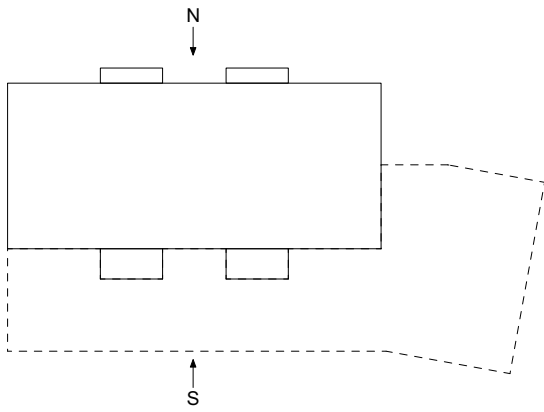




MEHRFAMILIENHAUS A
TALACHER
3068 UTZIGEN

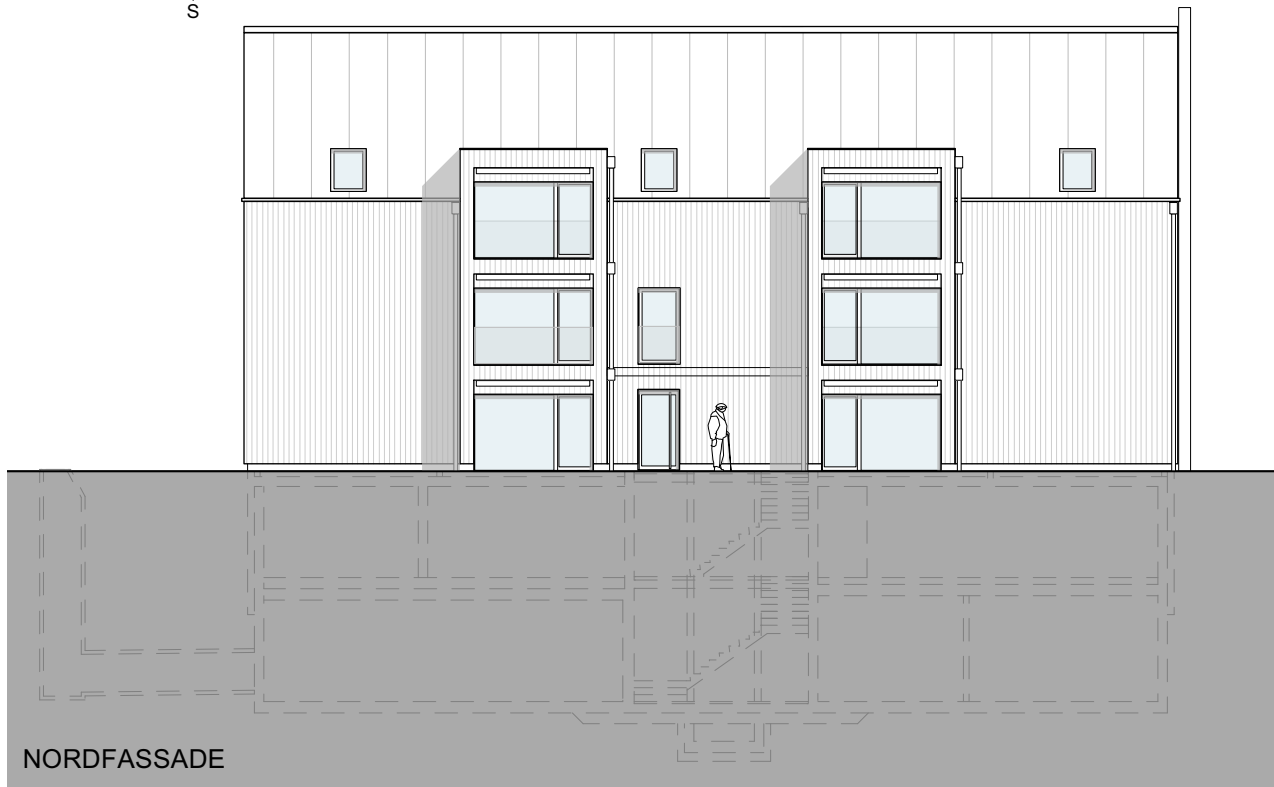
SCHNITT A-A

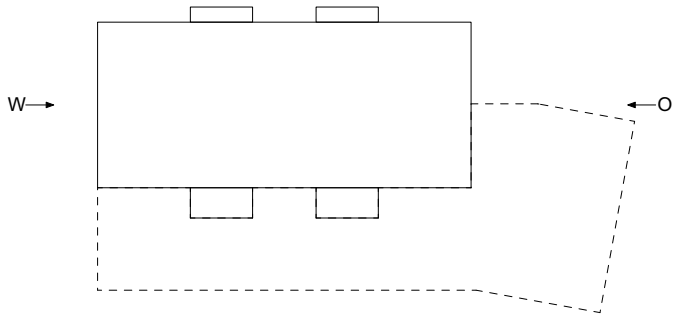




MEHRFAMILIENHAUS A
TALACHER
3068 UTZIGEN

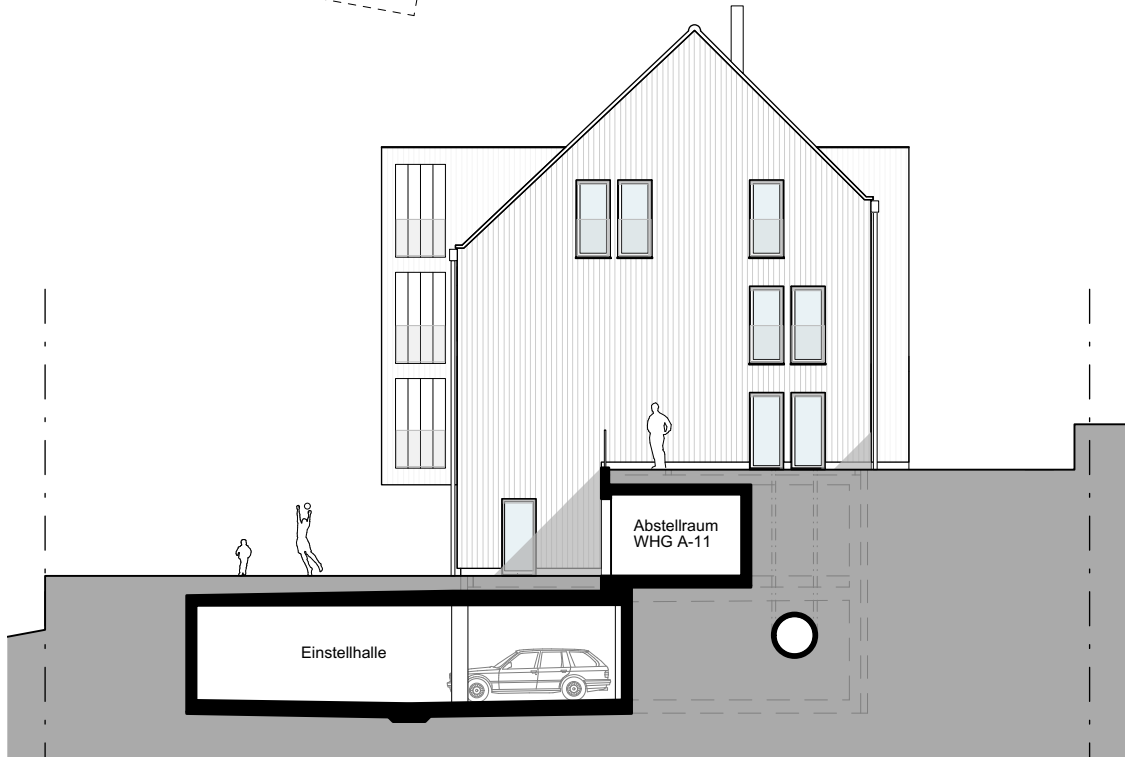
FASSADEN NORD/SÜD



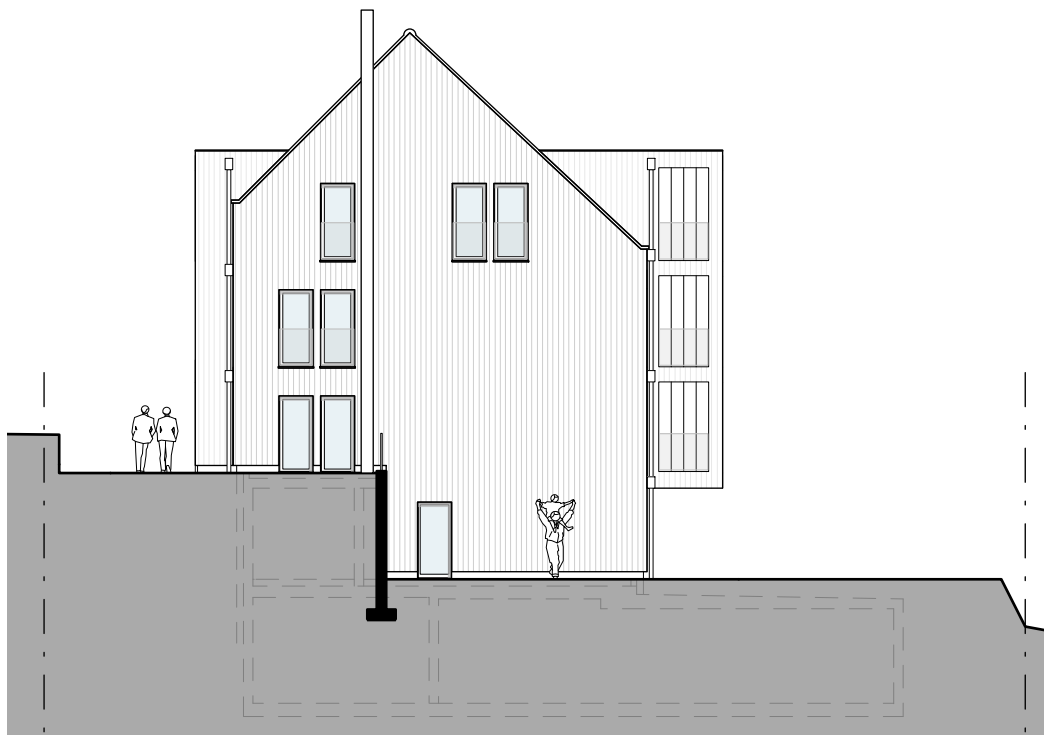


MEHRFAMILIENHAUS A
TALACHER
3068 UTZIGEN

FASSADEN OST/WEST



OSTFASSADE



WESTFASSADE

MEHRFAMILIENHAUS A
TALACHER
3068 UTZIGEN

EINSTELLHALLE/KELLER

